



Multi-access Edge Computing (MEC); Federation enablement APIs

Disclaimer: This DRAFT is a working document of ETSI ISG MEC. It is provided for information only and is still under development within ETSI ISG MEC. ETSI and its Members accept no liability for any further use/implementation of this Specification.

Non-published MEC drafts stored in the ["Open Area"](#) are working documents, these may be updated, replaced, or removed at any time

Do not use as reference material.

Disclaimer

Do not cite this document other than as "work in progress".

The present document has been produced and approved by the Multi-access Edge Computing (MEC) ETSI Industry Specification Group (ISG) and represents the views of those members who participated in this ISG. It does not necessarily represent the views of the entire ETSI membership.

Approved and published Specifications and reports for implementation of the MEC system shall be obtained via the ETSI Standards search page at:
<http://www.etsi.org/standards-search>

ReferenceDGS/MEC-0040FederationAPI

KeywordsAPI, Interworking, MEC, service

ETSI650 Route des Lucioles
F-06921 Sophia Antipolis Cedex - FRANCE

Tel.: +33 4 92 94 42 00 Fax: +33 4 93 65 47 16

Siret N° 348 623 562 00017 - APE 7112B
Association à but non lucratif enregistrée à la
Sous-Préfecture de Grasse (06) N° w061004871

Important notice

The present document can be downloaded from:

<http://www.etsi.org/standards-search>

The present document may be made available in electronic versions and/or in print. The content of any electronic and/or print versions of the present document shall not be modified without the prior written authorization of ETSI. In case of any existing or perceived difference in contents between such versions and/or in print, the prevailing version of an ETSI deliverable is the one made publicly available in PDF format at www.etsi.org/deliver.

Users of the present document should be aware that the document may be subject to revision or change of status.

Information on the current status of this and other ETSI documents is available at

<https://portal.etsi.org/TB/ETSIDeliverableStatus.aspx>

If you find errors in the present document, please send your comment to one of the following services:

<https://portal.etsi.org/People/CommitteeSupportStaff.aspx>

Notice of disclaimer & limitation of liability

The information provided in the present deliverable is directed solely to professionals who have the appropriate degree of experience to understand and interpret its content in accordance with generally accepted engineering or other professional standard and applicable regulations.

No recommendation as to products and services or vendors is made or should be implied.

No representation or warranty is made that this deliverable is technically accurate or sufficient or conforms to any law and/or governmental rule and/or regulation and further, no representation or warranty is made of merchantability or fitness for any particular purpose or against infringement of intellectual property rights.

In no event shall ETSI be held liable for loss of profits or any other incidental or consequential damages.

Any software contained in this deliverable is provided "AS IS" with no warranties, express or implied, including but not limited to, the warranties of merchantability, fitness for a particular purpose and non-infringement of intellectual property rights and ETSI shall not be held liable in any event for any damages whatsoever (including, without limitation, damages for loss of profits, business interruption, loss of information, or any other pecuniary loss) arising out of or related to the use of or inability to use the software.

Copyright Notification

Reproduction is only permitted for the purpose of standardization work undertaken within ETSI.

The copyright and the foregoing restrictions extend to reproduction in all media.

© ETSI 2022.
All rights reserved.

Contents

Intellectual Property Rights	5
Foreword.....	5
Modal verbs terminology.....	5
Executive summary	5
Introduction	5
1 Scope	6
2 References	6
2.1 Normative references	6
2.2 Informative references.....	6
3 Definition of terms, symbols and abbreviations.....	7
3.1 Terms.....	7
3.2 Symbols.....	7
3.3 Abbreviations	7
4 Overview	7
4.1 Introduction.....	7
4.2 GSMA Operator Platform and its interfaces	7
5 Description of the services (informative).....	8
5.1 Federation enablement service introduction.....	8
5.2 Sequence diagrams	9
5.2.1 Introduction.....	9
5.2.2 Registration/Update/Deregistration of MEC system(s) to the federation.....	9
5.2.2.1 Registration.....	9
5.2.2.2 Update.....	10
5.2.2.3 Deregistration.....	10
5.2.3 MEC system discovery	11
5.2.4 MEC application instance discovery	12
5.2.X1 REST based subscribe-notify model.....	13
5.2.X1.x1 Subscribing to federation event notifications.....	13
5.2.X1.x2 Receiving notification on expiry of federation event subscription.....	14
5.2.X1.x3 Updating subscription for federation event notifications	14
5.2.X1.x4 Unsubscribing from federation event notifications	15
5.2.X2 Receiving MEC system registration/update notifications	15
6 Data model	17
6.1 Introduction	17
6.2 Resource data types	17
6.2.1 Introduction.....	17
6.2.X Type: <TypeNameX>.....	17
6.3 Subscription data types.....	17
6.3.1 Introduction.....	17
6.3.Y Type: <TypeNameY>.....	17
6.4 Notifications data types	17
6.4.1 Introduction.....	17
6.4.Z Type: <TypeNameZ>	17
6.5 Referenced structured data types.....	17
6.5.1 Introduction.....	17
6.5.XX Type: <TypeNameXX>	17
6.6 Referenced simple data types and enumerations	17
6.6.1 Introduction.....	17
6.6.YY Type: <TypeNameYY>	17
7 API definition.....	17
7.1 Introduction	17

7.2	Global definitions and resource structure	17
7.w	Resource: <ResourceNameW>	17
7.w.1	Description.....	18
7.w.2	Resource definition.....	18
7.w.3	Resource methods.....	18
7.w.3.1	GET.....	18
7.w.3.2	PUT.....	18
7.w.3.3	PATCH.....	18
7.w.3.4	POST.....	18
7.w.3.5	DELETE.....	18
Annex A (informative): Enabling MEC App providers to access MEC federation services		19
Annex B (normative or informative):		Title of
	annex	20
B.1	First clause of the annex.....	20
B.1.1	First subdivided clause of the annex.....	20
Annex (informative): Bibliography.....		21
Annex (informative): Change History		22
History		23

Draft

Intellectual Property Rights

Essential patents

IPRs essential or potentially essential to normative deliverables may have been declared to ETSI. The declarations pertaining to these essential IPRs, if any, are publicly available for **ETSI members and non-members**, and can be found in ETSI SR 000 314: "*Intellectual Property Rights (IPRs); Essential, or potentially Essential, IPRs notified to ETSI in respect of ETSI standards*", which is available from the ETSI Secretariat. Latest updates are available on the ETSI Web server (<https://ipr.etsi.org/>).

Pursuant to the ETSI Directives including the ETSI IPR Policy, no investigation regarding the essentiality of IPRs, including IPR searches, has been carried out by ETSI. No guarantee can be given as to the existence of other IPRs not referenced in ETSI SR 000 314 (or the updates on the ETSI Web server) which are, or may be, or may become, essential to the present document.

Trademarks

The present document may include trademarks and/or tradenames which are asserted and/or registered by their owners. ETSI claims no ownership of these except for any which are indicated as being the property of ETSI, and conveys no right to use or reproduce any trademark and/or tradename. Mention of those trademarks in the present document does not constitute an endorsement by ETSI of products, services or organizations associated with those trademarks.

DECT™, **PLUGTESTS™**, **UMTS™** and the ETSI logo are trademarks of ETSI registered for the benefit of its Members. **3GPP™** and **LTE™** are trademarks of ETSI registered for the benefit of its Members and of the 3GPP Organizational Partners. **oneM2M™** logo is a trademark of ETSI registered for the benefit of its Members and of the oneM2M Partners. **GSM®** and the GSM logo are trademarks registered and owned by the GSM Association.

Foreword

This Group Specification (GS) has been produced by ETSI Industry Specification Group (ISG) Multi-access Edge Computing (MEC).

Modal verbs terminology

In the present document "**shall**", "**shall not**", "**should**", "**should not**", "**may**", "**need not**", "**will**", "**will not**", "**can**" and "**cannot**" are to be interpreted as described in clause 3.2 of the [ETSI Drafting Rules](#) (Verbal forms for the expression of provisions).

"**must**" and "**must not**" are **NOT** allowed in ETSI deliverables except when used in direct citation.

Executive summary

Introduction

1 Scope

The present document focuses on the functionalities enabled over the relevant reference points (i.e. Mfm-fed, Mff-fed, and Mfb-fed) to support MEC federation. It describes the information flows, required information, and specifies the necessary operations, data models and API definitions. The present document carefully considers the relevant work of other industry bodies relating to MEC federation (e.g. GSMA OPG, 5GAA, etc.) and all relevant work done in ETSI.

2 References

2.1 Normative references

References are either specific (identified by date of publication and/or edition number or version number) or non-specific. For specific references, only the cited version applies. For non-specific references, the latest version of the referenced document (including any amendments) applies.

Referenced documents which are not found to be publicly available in the expected location might be found at <https://docbox.etsi.org/Reference>.

NOTE: While any hyperlinks included in this clause were valid at the time of publication, ETSI cannot guarantee their long term validity.

The following referenced documents are necessary for the application of the present document.

- [1] ETSI GS MEC 001: "Multi-access Edge Computing (MEC); Terminology".

2.2 Informative references

References are either specific (identified by date of publication and/or edition number or version number) or non-specific. For specific references, only the cited version applies. For non-specific references, the latest version of the referenced document (including any amendments) applies.

NOTE: While any hyperlinks included in this clause were valid at the time of publication, ETSI cannot guarantee their long term validity.

The following referenced documents are not necessary for the application of the present document but they assist the user with regard to a particular subject area.

- [i.1] GSMA Permanent Reference Document: "Operator Platform Telco Edge Requirements", v1.0, Jun. 2021.

NOTE: Available at <https://www.gsma.com/futurenetworks/wp-content/uploads/2021/06/OPG-Telco-Edge-Requirements-2021.pdf>.

- [i.2] ETSI GR MEC 035: "Multi-access Edge Computing (MEC); Study on Inter-MEC systems and MEC-Cloud systems coordination".
- [i.3] ETSI GS MEC 002: "Multi-access Edge Computing (MEC); Phase 2: Use Cases and Requirements".
- [i.4] ETSI GS MEC 003: "Multi-access Edge Computing (MEC); Framework and Reference Architecture".

3 Definition of terms, symbols and abbreviations

3.1 Terms

Void.

3.2 Symbols

Void.

3.3 Abbreviations

For the purposes of the present document, the abbreviations given in ETSI GS MEC 001 [1] and the following apply:

App	Application
CHF	Charging Functions
CR	Cloud Resources
E/WBI	East/West Bound Interface
GSMA	GSM Association
MEF	MEC Federator
MNO	Mobile Network Operator
NBI	NorthBound Interface
NR	Network Resources
OEM	Original Equipment Manufacturer
OP	Operator Platform
SBI	SouthBound Interface
UNI	User Network Interface

4 Overview

4.1 Introduction

The present document specifies Federation enablement APIs that enable the shared usage of MEC services and applications across different systems (e.g. MEC system, Cloud system).

Clause 4 introduces the relevant work of other industry bodies e.g. GSMA OPG.

Clause 5 presents the reference scenarios for the MEC federation, and introduces the functionalities enabled via the relevant reference points (i.e. Mfm-fed, Mff-fed and Mfb-fed). It provides the high-level information flows and describes the necessary operations.

Clause 6 describes the data models that can be exchanged over the Federation enablement APIs, which provide detailed descriptions of all information elements used for MEC federation.

Clause 7 defines the actual Federation enablement APIs providing detailed information of how information elements are mapped into a RESTful API design.

4.2 GSMA Operator Platform and its interfaces

According to the GSMA Permanent Reference Document (PRD), "Operator Platform Telco Edge Requirements" [i.1], an Operator Platform (OP) is a facilitator of subscribers' seamless access to edge applications instantiated within a federation of edge networks involving multiple owners. Such seamless access is needed either when subscribers roam to visited networks or when a partner network is a better choice for edge application instantiation.

The objective of the OP concept is to guide the industry ecosystem, i.e. MNOs, vendors, OEMs and service providers towards shaping a common solution for the exposure of network capabilities. As an initial step, [i.1] provides both an end-to-end definition and requirements of the OP for the support of edge computing. In further details, the GSMA defines OP requirements as well as OP architecture and functional modules. Therefore, aim of GSMA is to engage with standardization and open source communities that will undertake the standard definition of the OP. As depicted in Figure 4.2-1, the following OP interfaces have been defined [i.1]:

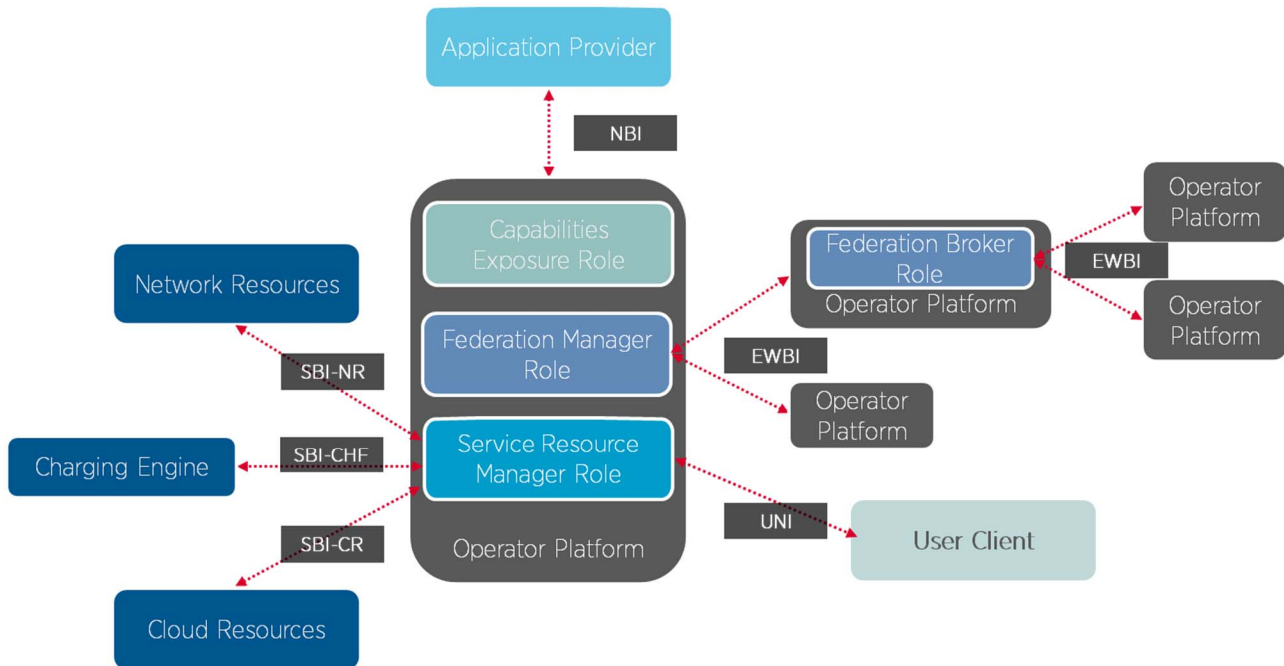


Figure 4.2-1: High-level OP reference architecture (source: [i.1])

- Northbound Interface (NBI);
- Southbound Interface (SBI); Cloud Resources (SBI-CR);
- Southbound Interface (SBI); Network Resources (SBI-NR);
- Southbound Interface (SBI); Charging Functions (SBI-CHF);
- User Network Interface (UNI);
- East/ West Bound Interface (E/WBI).

Editor's note: for the above figure we need a copyright permission from GSMA OPG.

5 Description of the services (informative)

5.1 Federation enablement service introduction

Federation enablement APIs offers services such as discovery, information exchange and application life cycle management to enable the inter-work of one MEC system with another MEC system. The related requirements were carefully studied and extracted from various use cases in ETSI GR MEC 035 [i.2] including V2X services scenario, multi-operator environment, Application instance transfer between a MEC system and a MEC/Cloud system, connecting different services, immersive AR game scenario, edge service delivery through visited network and edge node sharing.

The extracted requirements are listed as follows, summarized from ETSI GS MEC 002 [i.3].

- MEC system discovery ([Federation-02])

- MEC platform discovery ([Federation-03])
- Information exchange between MEC systems ([Federation-04])
- Information exchange between MEC platforms ([Federation-05])
- Support handling direct/indirect MEC system communication ([Federation-06])
- MEC application discovery ([Federation-07])
- MEC application on-boarding/instantiation ([Federation-08])
- Information exchange among MEC applications ([Federation-09])

NOTE: Reusing the data models and APIs for MEC-Cloud coordination is considered if applicable, but its information flow is out of scope of the present document.

5.2 Sequence diagrams

5.2.1 Introduction

The rest of clause 5.2 introduces the following sequence diagrams based on the extracted requirements.

- Registration of MEC system(s) to the federation (clause 5.2.2)
- Discovery:
 - MEC system discovery (clause 5.2.3)
 - MEC platform discovery (clause 5.2.z)
 - MEC application discovery (clause 5.2.4)
- MEC application on-boarding/instantiation (clause 5.2.zz)

NOTE 1: Support handling direct/indirect MEC system communication is satisfied by MEC Federator as defined in ETSI GS MEC 003 [i.4].

NOTE 2: The requirement for registration is based on the premise that multiple MEOs can register to a single MEF.

Editor's note: The addition of MEC service discovery still needs to be investigated.

5.2.2 Registration/Update/Deregistration of MEC system(s) to the federation

5.2.2.1 Registration

Information flow of registration is used for enabling MEO to register its own information to MEC Federator over Mfm reference point. The registered information may contain e.g. MEC system information, etc. The information flow is depicted in Figure 5.2.2.1-1.

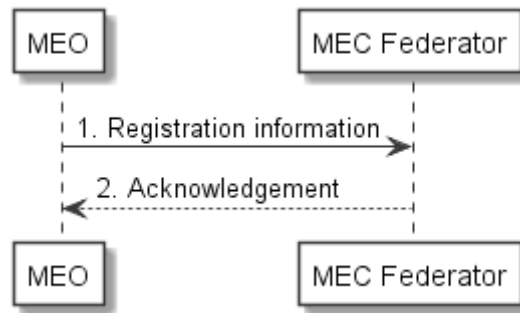


Figure 5.2.2.1-1: Information flow of Registration

Registration procedure consists of the following steps:

- 1) The MEO sends a registration request to MEC Federator.
- 2) MEC Federator returns an acknowledgement to MEO.

5.2.2.2 Update

Information flow of update of MEC system(s) to the federation is depicted in Figure 5.2.2.2-1.

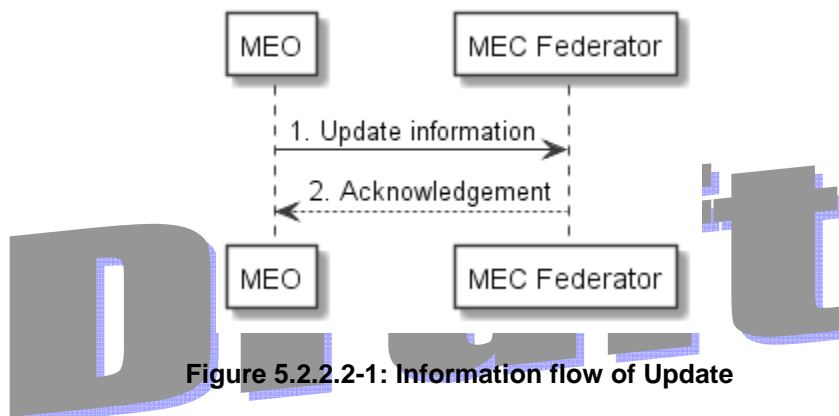


Figure 5.2.2.2-1: Information flow of Update

Update procedure consists of the following steps:

- 1) The MEO sends an update request to MEC Federator.
- 2) MEC Federator returns an acknowledgement to MEO.

5.2.2.3 Deregistration

Information flow of deregistration of MEC system(s) from the federation is depicted in Figure 5.2.2.3-1.

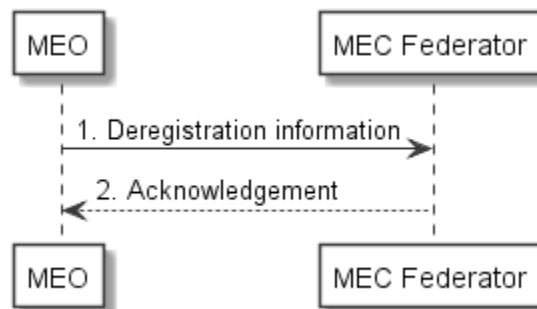


Figure 5.2.2.3-1: Information flow of Deregistration

Deregistration procedure consists of the following steps:

- 1) The MEO sends an update request to MEC Federator.
- 2) MEC Federator returns an acknowledgement to MEO.

5.2.3 MEC system discovery

Information flow of MEC system discovery is used for enabling MEO to be aware of another MEC system. MEC system discovery is the primitive and essential procedure for enabling the other functionalities relating to Feature MECFederation. The information flow is depicted in Figure 5.2.3-1.

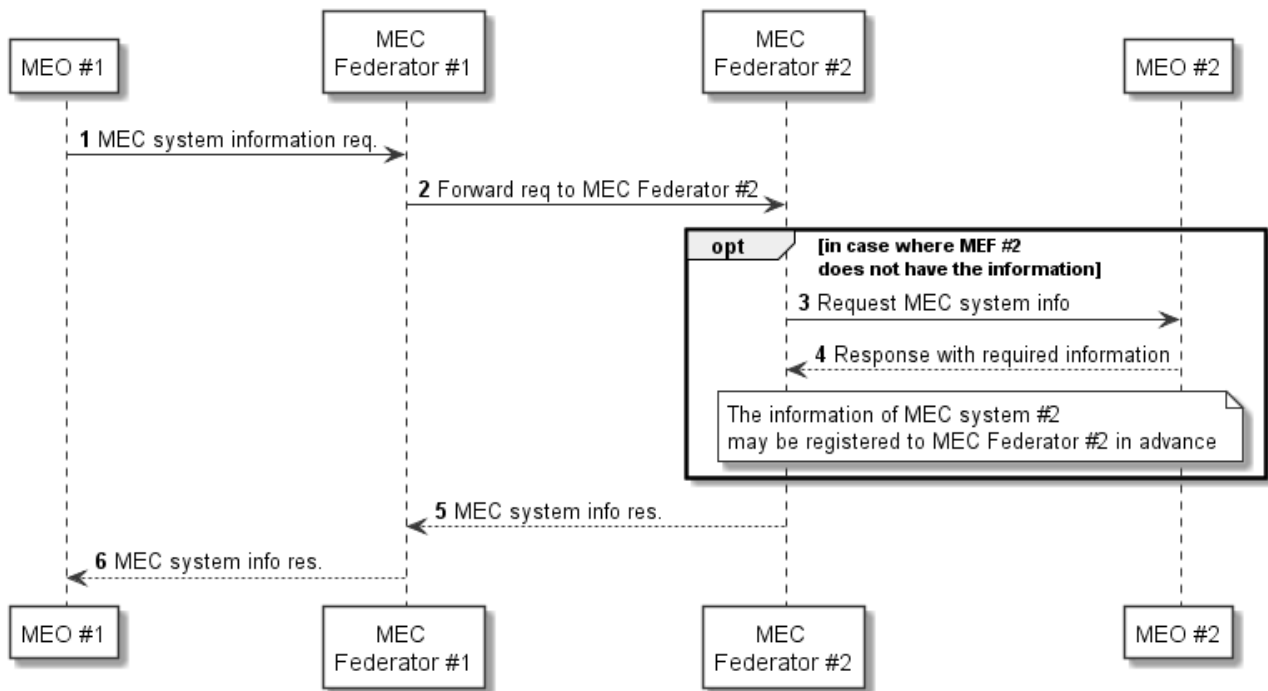


Figure 5.2.3-1: Information flow of MEC system discovery

As a prerequisite of this flow, MEC Federator Discovery is conducted among MEC Federators, which means MEC Federators are aware of each other in advance.

- 1) The MEO #1 sends a MEC system information request to MEC Federator #1 over Mfm reference point. This request is triggered by MEC platform or MEC Application instance.
- 2) MEC Federator #1 forwards the request to MEC Federator #2.
- 3) In case where MEC Federator #2 does not have the desired information (which means MEO #2 does not register its own information in advance), MEC Federator #2 sends a MEC system information request to MEO #2 over Mfm reference point.
- 4) MEO #2 responds with the information of its own system to MEC Federator #2.
- 5) MEC Federator #2 forwards the response to MEC Federator #1.
- 6) MEC Federator #1 forwards the response to MEO #1.

Editor's note: the addition of pub/sub mechanisms still have to be considered as an additional option for MEC system discovery.

5.2.4 MEC application instance discovery

MEC application instance discovery refers to a process triggered by a MEC application instance, which discovers one or more MEC application instances in the MEC federation. For example, the discovery may be based on information of a specific MEC application instance or of the corresponding application descriptor. This process is triggered, for instance, in the cases calling for MEC application instance-to-instance communication (e.g. neighboring vehicles communicating with different MEC application instances may need to cooperate via those MEC application instances, grouped users communicating with different MEC application instances may need to communicate with each other via those MEC application instances, or grouped users may be gathered from different MEC systems and served by a single MEC application instance). The information flow is depicted in Figure 5.2.4-1.

Editor's note: Discovery of application instance of different appDId is FFS. How to obtain the identifier of application instance of different appDId should be addressed.

Editor's note: it is FFS with regards to the application instance discovery criteria, which need to take into account of the use cases discussed in MEC035 as well as the requirements of GSMA OP.

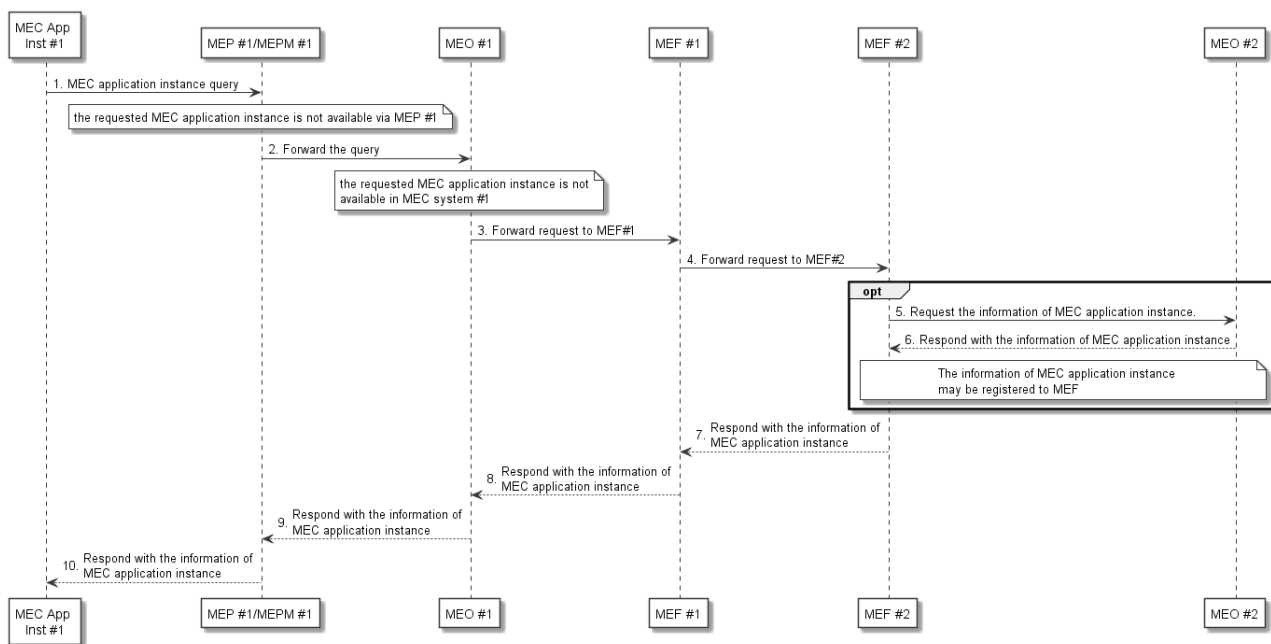


Figure 5.2.4-1: Information flow of MEC application discovery

Procedure of MEC application instance discovery consists of the following steps:

- MEC application instance #1 sends a query to MEP #1 to discover a MEC application instance.

NOTE 1: MEC application instance #1 may know either the identifier of the requested application instance or identifier of application descriptor.

Editor's note: it is FFS with regards to the application instance discovery criteria.

In the case where the desired MEC application instance is not available via MEP #1, MEP #1 forwards the query to MEO #1 via MEPM #1.

NOTE 2: How to handle the query between MEP #1 and MEO #1 is not further specified in the present document.

- 1) MEO #1 examines if the requested MEC application instance is available in MEC system #1. In case where the MEC application instance is not available in MEC system #1, MEO #1 forwards the query to MEF #1. Otherwise, go to step 9.
- 2) MEF #1 forwards the query to MEF #2.
- 3) If the information of MEC application instance, i.e. the list of active MEC application instances, is not registered to MEF #2, MEF #2 forwards the query to MEO #2.

- 4) MEO #2 responds with the information of MEC application instance(s). If no available MEC application is discovered, void would return.

NOTE 3: In the case where multiple MEC application instances are found, the information of a list of MEC application instances is returned. In this case, the information of the MEC platform associated with each instance might be useful for the selection of MEC application instances. However, for security reasons, the information of MEC platform should be hidden between federated MEC systems. Based on the agreement among federated MEC systems, the information of MEC platform, e.g. available MEC services, can be included in the response.

- 5) MEF #2 responds with the information of MEC application instance(s) to MEF #1.
 6) MEF #1 responds with the information of MEC application instance(s) to MEO #1.
 7) MEO #1 responds with the information of MEC application instance(s) to MEP #1 via MEPM #1.
 8) MEP #1 responds with the information of MEC application instance(s) to MEC application instance #1.

Editor's note: How to realize MEC application discovery using a pub/sub mechanism is FFS.

5.2.X1 REST based subscribe-notify model

Editor's note: the order of this clause may change depending on other sequence diagrams that will be approved in future. This clause would be located after other request/response diagrams.

5.2.X1.x1 Subscribing to federation event notifications

To receive a notification of federation event, MEO creates a subscription to the event as depicted in Figure 5.2.X1.x1-1.

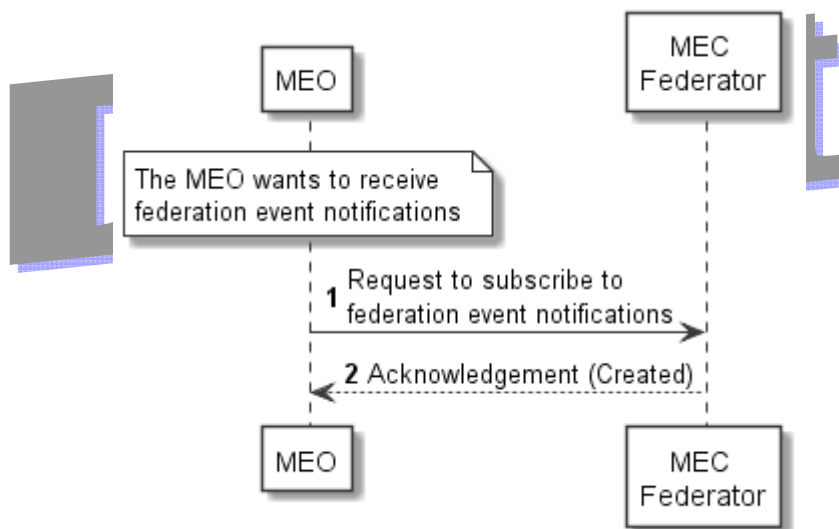


Figure 5.2.X1.x1-1: Information flow of subscribing to federation event notifications

Subscribing to federation event notification consists of the following steps.

When the MEO wants to receive notifications about MEC system registration/update, it creates a subscription to federation event:

- 1) The MEO sends a request for subscribing to federation event notifications.
- 2) The MEC Federator returns an acknowledgement to the MEO.

Editor's note: The set of federation events needs to be specified.

5.2.X1.x2 Receiving notification on expiry of federation event subscription

An expiry time for a federation event subscription may be defined. In case expiry time is used, prior to the expiry, a notification is sent to the subscriber MEO. The scenario where the MEC Federator sends the notification is depicted in Figure 5.2.X1.2-1.

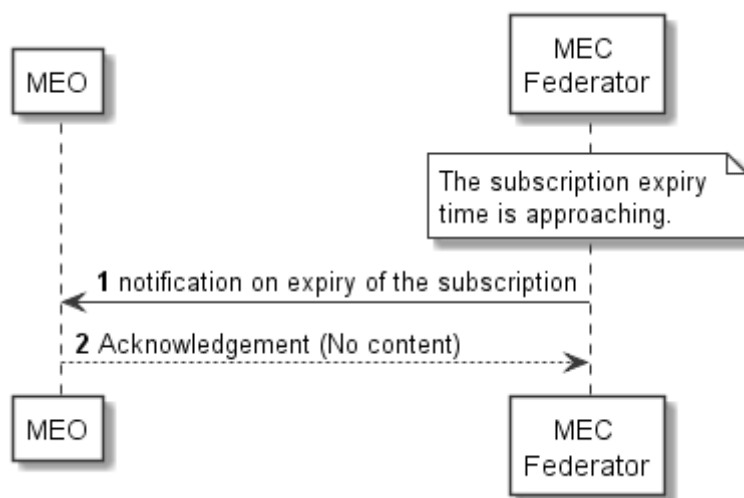


Figure 5.2.X1.x2-1: Information flow of receiving notification on expiry of federation event subscription

Receiving notification on expiry of federation event subscription consists of the following steps:

- 1) The MEC Federator sends a notification on expiry of the subscription when the subscription expiry time is approaching.
- 2) The MEO returns an acknowledgement to the MEC Federator.

5.2.X1.x3 Updating subscription for federation event notifications

Figure 5.2.X1.x3-1 presents the scenario where the MEO needs to update an existing subscription for federation event notification.

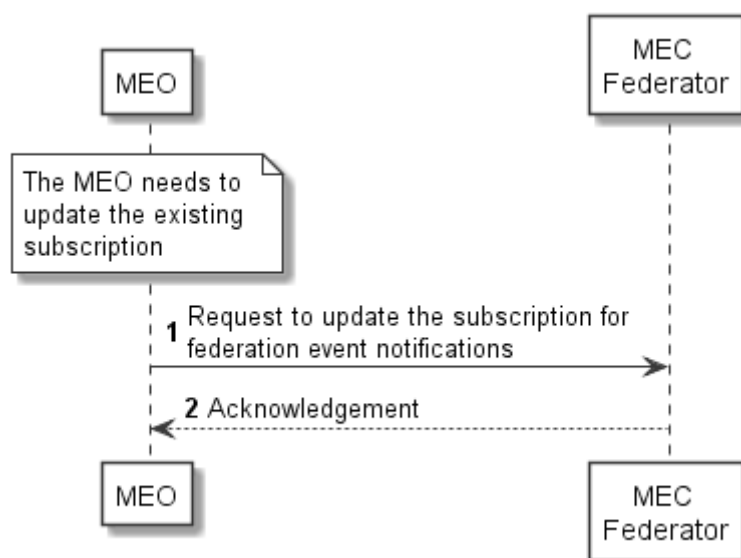


Figure 5.2.X1.x3-1: Information flow of updating subscription for federation event notifications

Updating subscription for federation event notification consists of the following steps:

- 1) The MEO sends a request for updating subscription for federation event notifications.
- 2) The MEC Federator returns an acknowledgement to the MEO.

5.2.X1.x4 Unsubscribing from federation event notifications

Figure 5.2.X1.x4-1 shows the scenario of deleting the subscription when the MEO does not want to receive federation event notification after subscribing to the event.

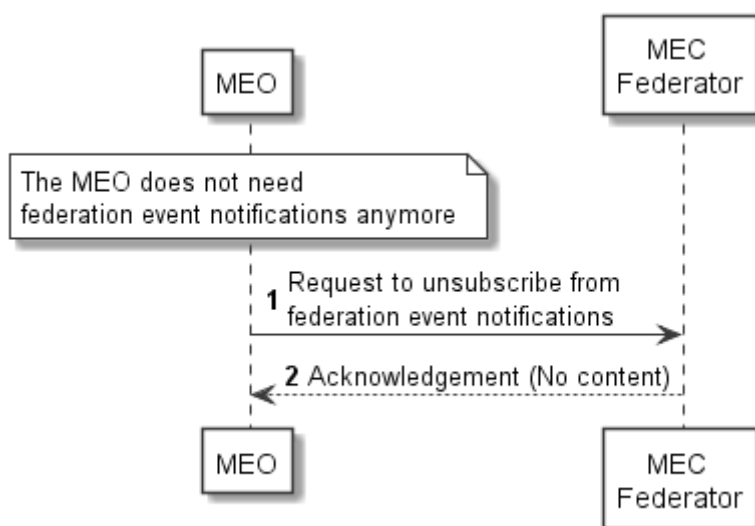


Figure 5.2.X1.x4-1: Information flow of unsubscribing from federation event notifications

Unsubscribing federation event notification consists of the following steps:

- 1) The MEO sends a request for unsubscribing from federation event notifications.
- 2) The MEC Federator returns an acknowledgement to the MEO.

5.2.X2 Receiving MEC system registration/update notifications

Figure 5.2.X2-1 presents the scenario of MEC system registration/update notification.

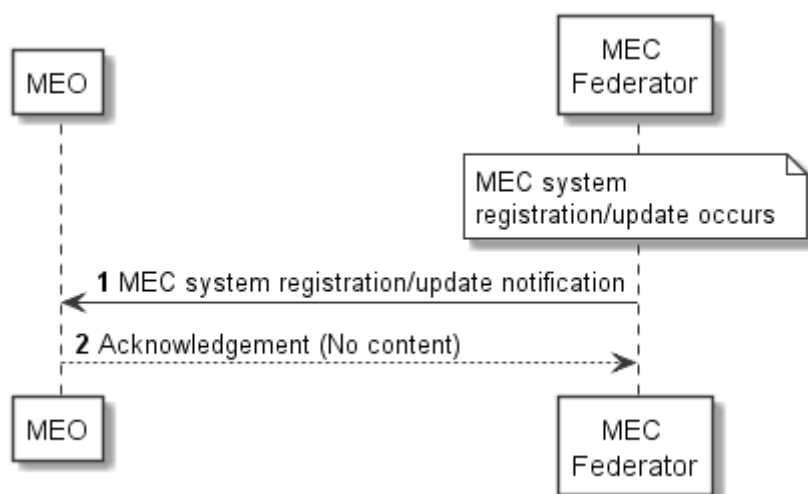


Figure 5.2.X2-1: Information flow of receiving MEC system registration/update notification

Receiving MEC system registration/update notification consists of the following steps:

- 1) When MEC system registration/update occurs, the MEC Federator sends a notification of registration/update of other MEC system to the subscriber MEO.
- 2) The MEO returns an acknowledgement to MEC Federator.

Draft

-
- 6 Data model
 - 6.1 Introduction
 - 6.2 Resource data types
 - 6.2.1 Introduction
 - 6.2.X Type: <TypeNameX>
 - 6.3 Subscription data types
 - 6.3.1 Introduction
 - 6.3.Y Type: <TypeNameY>
 - 6.4 Notifications data types
 - 6.4.1 Introduction
 - 6.4.Z Type: <TypeNameZ>
 - 6.5 Referenced structured data types
 - 6.5.1 Introduction
 - 6.5.XX Type: <TypeNameXX>
 - 6.6 Referenced simple data types and enumerations
 - 6.6.1 Introduction
 - 6.6.YY Type: <TypeNameYY>
-
- 7 API definition
 - 7.1 Introduction
 - 7.2 Global definitions and resource structure
 - 7.w Resource: <ResourceNameW>

- 7.w.1 Description
- 7.w.2 Resource definition
- 7.w.3 Resource methods
 - 7.w.3.1 GET
 - 7.w.3.2 PUT
 - 7.w.3.3 PATCH
 - 7.w.3.4 POST
 - 7.w.3.5 DELETE

Draft

Annex A (informative): Enabling MEC App providers to access MEC federation services

According to ETSI GR MEC 035 [i.2], a "MEC federation is a federated model of MEC systems enabling shared usage of MEC services and applications". This definition is based on the need to standardize features taking into account the GSMA Operator Platform Group (OPG) OP Telco Edge requirements contained in [i.1].

In further detail, in [i.1], a number of interfaces are described, among which:

- (i) the NBI connecting an application provider to an OP instance; and
- (ii) the E/WBI connecting two OP instances.

Definitions of these two particular interfaces, as documented in [i.1], need to be considered by ETSI MEC when specifying the federation enablement services. Correspondences of NBI and E/WBI interfaces to MEC federation functional entities and reference points are shown in the exemplary Figure A-1, where it is assumed that each OP instance refers to a federated MEC system and there is no MEFB entity present.

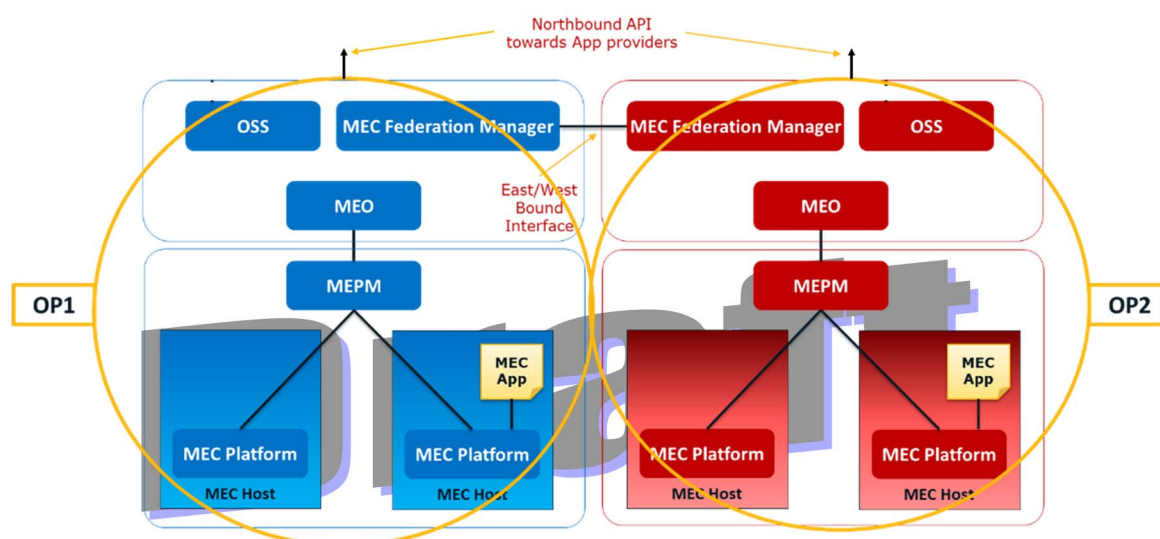


Figure A-1: MEC federation and exemplary correspondence to GSMA OP interfaces NBI and E/WBI [i.1]

NOTE: In the context of MEC federation, in the view of an implementation with 5G networks, both ETSI MEC and 3GPP standards should be considered, in a harmonized way.

In this scenario, enablement of MEC App providers to access the MEC federation in an interoperable manner is needed. This would imply the possibility for MEC App providers to offer MEC applications instantiated across the MEC federation, benefiting from all the resources (including MEC services) shared in the MEC federation, according to the authorization policies defined by the multi-party agreements among the business entities forming the MEC federation. In detail, what is needed is enabling an interoperable interface to MEC App providers accessing a MEC federation, with a list of available MEC services. Privacy and security of each MEC system the MEC federation is composed of needs to be ensured, considering that each MEC system which is part of the MEC federation has its own policy and need to expose information, customize access policies and capability to offer customized tools to MEC App providers. The E/WBI interface (along with the NBI interface) is an enabler for the access of MEC federation services by MEC App providers. In particular, the E/WBI enables MEC systems forming a MEC federation to be informed about the MEC App provider's requirement, information initially provided by the MEC App provider to a MEC system of a MEC federation through the NBI interface.

Annex B (normative or informative):
Title of annex

B.1 First clause of the annex

B.1.1 First subdivided clause of the annex

Draft

Annex (informative):
Bibliography

Draft

Annex (informative): Change History

Date	Version	Information about changes
<Month year>	<#>	<Changes made are listed in this cell>

Draft

History

Document history		
V2.0.0	2021-06	Initial version of GS.
V2.0.1	2021-06	Implements document MEC(21)000260r2.
V2.0.2	2021-07	Implements document MEC(21)000268r5.
V2.0.3	2021-09	Implements documents MEC(21)000406r3, MEC(21)000407r2, and MEC(21)000408r2.
V3.0.4	2021-10	Implements documents MEC(21)000448r2, MEC(21)449r4. Corrects versioning.
V3.0.5	2021-12	Implements documents MEC(21)000373r5, MEC(21)000556, MEC(21)000547r2.
V3.0.5	January 2022	Clean-up done by <i>editHelp!</i> E-mail: mailto:edithelp@etsi.org
V3.0.6	January 2022	Early draft based on editHelp review, ready to go to MEC Open area.

Draft