



TTF 013: TD-LTE and TDD-LTE Enhancement

Status Update

Document History

- 2021-09-24: Document submitted for MTS#84
- 2021-05-10: Document submitted for MTS#83
- 2021-03-09: Document submitted for TTF 013 Kick-Off Meeting

From the Terms of Reference...

TTF 013: Objectives (enhancement)

- Support for testing RESTful API services specified with OpenAPI
 - data definition refinements
 - workflow, TD generator, test execution engine
- Textual syntax standardisation
 - clean-up and refinement of Annex B (also of Part 4)
 - integration of Part 1 and Part 4 syntax (by extension also Part 7)
- Methodology for deriving TDs from TOs/TPs
- Initial work on testing of AI systems (requirements)

TTF 013: Objectives (maintenance)

- Adaptation and extension of TDL addressing CRs
 - new features (parametrisable TOs, reusable events, OpenAPI-related)
 - updates to relevant parts, mapping new features to TTCN-3
- Update of TOP tools
 - resolve CRs, catch up with Eclipse updates, adaptations to TDL
- Update of technical report
 - validation, user guidelines

TTF 013: Deliverables

Deliv.	Work Item code Standard number	Working title Scope
D1*	RES/ES 203 119-1 V1.6.1	Methods for Testing and Specification (MTS); The Test Description Language (TDL); Part 1: Abstract Syntax and Associated Semantics
D2*	RES/ES 203 119-2 V1.5.1	Methods for Testing and Specification (MTS); The Test Description Language (TDL); Part 2: Graphical Syntax
D3*	RES/ES 203 119-3 V1.5.1	Methods for Testing and Specification (MTS); The Test Description Language (TDL); Part 3: Exchange Format
D4*	RES/ES 203 119-4 V1.5.1	Methods for Testing and Specification (MTS); The Test Description Language (TDL); Part 4: Structured Test Objective Specification (Extension)
D5*	RES/ES 203 119-6 V1.3.1	Methods for Testing and Specification (MTS); The Test Description Language (TDL); Part 6: Mapping to TTCN-3
D6*	RES/ES 203 119-7 V1.3.1	Methods for Testing and Specification (MTS); The Test Description Language (TDL); Part 7: Extended Test Configurations
D7	DES/ES 203 119-8 V1.1.1	Methods for Testing and Specification (MTS); The Test Description Language (TDL); Part 8: Textual Syntax
D8	RTS/TR 103 119 V1.3.1	Methods for Testing and Specification (MTS); The Test Description Language (TDL); Reference Implementation and User Guidelines

* Work items of the TDL standard series which are not affected by CRs will not be updated.

Today

- Work plan
- Tasks and status
- Open questions

Planing Summary

Work Plan

- Timescale: Mar, 2021 — Apr, 2022
 - work remotely, weekly online meetings, meeting in person not possible
 - coordinated remote sessions scheduled as needed, based on availability
- Working sessions
 - WK15: Apr 12–16 Focus Week @ Home (5 days)
 - WK36–WK37: Sep 8–14 Focus Week @ Home (4/5 days)
 - WK45: Nov 10-12: Focus Week @Home (3 days)
 - WK49: Dec 8-10: Focus Week @Home (3 days)

Milestone Definitions

Task / Mil.	Destination	Description	Cut-off Date
MA	ETSI	Early drafts of D1, D2, D4, D6 available First progress report to be approved by TC MTS	15/05/2021
MB	ETSI	Stable drafts of D1 – D7 and early draft of D8 available Second progress report be approved by TC MTS	15/09/2021
MC	ETSI	Final drafts of D1 – D8 submitted to TC MTS	21/12/2021
MD	ETSI	Deliverables D1-D8 approved by TC MTS Final report to be approved by TC MTS	31/01/2022
ME	ETSI	Deliverables published, TTF closed	30/04/2022

* Final drafts delayed a bit due to vacation and illness.

Milestones (Current Planning)

N	Task / Milestone / Deliverable	ToR Targets	PM / Current Targets
	Start of work	01-Mar-2021	08-Mar-2021
T0	Project Management	01-Mar-2021–30-Apr-2022	08-Mar-2021–30-Apr-2022
T1	TDL Evolution	01-Mar-2021–31-Dec-2021	08-Mar-2021–31-Dec-2021
T2	TOP for RESTful API Services	15-May-2021–31-Dec-2021	15-May-2021–31-Dec-2021
T3	TDL Methodology	15-May-2021–31-Dec-2021	15-May-2021–31-Dec-2021
MA	Early drafts/report (MTS#83)	15-May-2021	15-May-2021
MB	Stable drafts/report (MTS#84)	15-Sep-2021	15-Sep-2021
MC	Final drafts (before MTS#85)	20-Dec-2021	20-Dec-2021
MD	Final report (MTS#85)	31-Jan-2022	31-Jan-2022
ME	Deliverables published	30-Apr-2022	30-Apr-2022

* Preliminary work on T2 and T3 started informally before MA as it informs work on T1 as well.

Overall Timeline (Current)

Task / Mil.	Description	M	A	M	J	J	A	S	O	N	D	J	F	M	A	M	J
T0	Project Management	█	█	█	█	█	█	█	█	█	█	█	█	█	█		
T1	TDL Evolution	█	█									█					
T2	TOP for RESTful API Services			█	█	█	█	█	█	█	█	█					
T3	TDL Methodology			█	█	█	█	█	█	█	█	█					
MA	Early drafts/report (MTS#83)			█								█					
MB	Stable drafts/report (MTS#84)							█				█					
MC	Final drafts (before MTS#85)										█	█					
MD	Final report (MTS#85)											█					
ME	Deliverables published											█			█		

Tasks

Task 0: Project Management

- Four TTF working sessions
 - Additional working sessions to be scheduled as needed.
- Progress and final reports
- Communications
 - Open meetings: 10-Mar-2021, 19-May-2021, 7-Jul-2021, 14-Jul-2021
 - Board SOOS presentation: 20-May-2021
 - Presentation at the UCAAT 2021
 - TTF Website: <https://portal.etsi.org/STF/STFs/STF-HomePages/T013>

Task 1: TDL Evolution

- Standardised textual syntax -> brace- and indentation-based
- Parameterizable test objectives -> TO variants
- Re-usable events in TDL-TO -> variants / events templates
- Supporting RESTful API services testing -> features, framework
- Resolving open CRs -> CR updates in Mantis pending
- Design of new features according to the submitted CRs

Status: TDL Evolution

- Textual syntax draft proposal (Part 8) - **additional refinements**
 - both brace-based (default) and indentation-based delimiters for blocks
 - alternative notation for select constructs (Message, ProcedureCall)
 - natural vs programming language feel (currently still a bit of a mix)
 - natural language for TO, programming language for TDs
 - completeness: mostly complete
 - few exceptions, e.g. Annotations, Comments on DataUse
 - case-insensitive keywords

Status: TDL Evolution

```
Package returns tdl::Package:
  AnnotationFragment
  'Package' name=Identifier
  BEGIN
    (^import+=ElementImport)*
    (packagedElement+=PackageableElement)*
    (nestedPackage+=Package)*
  END
  WithCommentFragment?
;
```

```
Package CombinedBehaviours {
  Import all from DataUse
  Import all from DataDefinition
  Import all from DataUse.DynamicDataUse
  Import all from TestConfiguration

  Test Description singleCombinedExample uses base {
    //...
  }
}
```

```
Package CombinedBehaviours
  Import all from DataUse
  Import all from DataDefinition
  Import all from DataUse.DynamicDataUse
  Import all from TestConfiguration
  Test Description singleCombinedExample uses base
```

```
BEGIN : '{'
END : '}'
```

```
BEGIN : <INDENT+>
END : <INDENT->
```

Status: TDL Evolution

Draft version

```
Package TestConfiguration {
  Import all from DataDefinition
  Import all from Foundation
  Message Gate HTTP accepts Post, Posts
  Message Gate HTTPS extends HTTP accepts Binary
  Procedure Gate RPC accepts publish
  Component Node {
    timer global
    variable Binary authToken
    variable Boolean authenticated
    variable Integer lastPostId
    gate HTTP http
    gate RPC rpc
  }
  Component SecureNode extends Node {
    gate HTTPS https
  }
  Configuration base {
    create SUT server of type Node
    create Tester client of type Node
    connect client.http to server.http
    connect cRPC=client.rpc to sRPC=server.rpc
  }
}
```

BEGIN : '{'
END : '}'

```
Package TestConfiguration
  Import all from DataDefinition
  Import all from Foundation
  Message Gate HTTP accepts Post, Posts
  Message Gate HTTPS extends HTTP accepts Binary
  Procedure Gate RPC accepts publish
  Component Node
    timer global
    variable Binary authToken
    variable Boolean authenticated
    variable Integer lastPostId
    gate HTTP http
    gate RPC rpc
  Component SecureNode extends Node
    gate HTTPS https
  Configuration base
    create SUT server of type Node
    create Tester client of type Node
    connect client.http to server.http
    connect cRPC=client.rpc to sRPC=server.rpc
```

BEGIN : <INDENT+>
END : <INDENT->

Status: TDL Evolution

Final version

```
Package TestConfiguration {
  Import all from DataDefinition
  Import all from Foundation
  Message Gate HTTP accepts Post, Posts
  Message Gate HTTPS extends HTTP accepts Binary
  Procedure Gate RPC accepts publish
  Component Node {
    timer global
    variable Binary authToken
    variable Boolean authenticated
    variable Integer lastPostId
    gate HTTP http
    gate RPC rpc
  }
  Component SecureNode extends Node {
    gate HTTPS https
  }
  Configuration base {
    Node server as SUT,
    Node client as Tester,
    connect client::http to server::http,
    connect cRPC=client::rpc to sRPC=server::rpc
  }
}
```

BEGIN : '{'
END : '}'

```
Package TestConfiguration
  Import all from DataDefinition
  Import all from Foundation
  Message Gate HTTP accepts Post, Posts
  Message Gate HTTPS extends HTTP accepts Binary
  Procedure Gate RPC accepts publish
  Component Node
    timer global
    variable Binary authToken
    variable Boolean authenticated
    variable Integer lastPostId
    gate HTTP http
    gate RPC rpc
  Component SecureNode extends Node
    gate HTTPS https
  Configuration base
    Node server as SUT,
    Node client as Tester,
    connect client::http to server::http,
    connect cRPC = client::rpc to sRPC = server::rpc
```

BEGIN : <INDENT+>
END : <INDENT->

Draft version

Status: TDL Evolution

//default

server.http sends ? of type RestrictedListOfInt to client.http

//default + variable assignment

server.http sends ? of type RestrictedListOfInt to client.http
assigned to authToken

//alternative: swap source and target

client.http receives ? of type RestrictedListOfInt from server.http

//alternative: swap source and target and assign to variable

authToken = client.http receives ? of type RestrictedListOfInt from server.http

Final version

Status: TDL Evolution

//default

server::http sends ? {RestrictedListOfInt} to client::http

//default + variable assignment

server::http sends ? {RestrictedListOfInt} to client::http
where it is assigned to authToken

//alternative: swap source and target

client::http receives ? {RestrictedListOfInt} from server::http

//alternative: swap source and target and assign to variable

authToken = client::http receives ? {RestrictedListOfInt} from server::http

Status: TDL Evolution

Test Purpose TP_RESOURCE_GET_200

Objective: "Read full contents of a resource with a valid ID"

Reference: "Clause 4.3.2.4", "Clause 4.3.2.6"

Expected behaviour

ensure that

when

the Server entity receives a vGET request containing
uri indicating value "/resource/",
id set to VALID_ID

then

the Server entity sends a HTTP response containing
status set to 200 OK,
body containing
id set to VALID_ID

Status: TDL Evolution

Test Purpose TP_RESOURCE_GET

Objective: "Read full contents of a resource with an ID"

Reference: "Clause 4.3.2.4", "Clause 4.3.2.6"

Expected behaviour

ensure that

when

the Server entity receives a vGET request containing
uri indicating value "/resource/",
id set to ID

then

the Server entity sends a HTTP response containing
status set to HTTP_STATUS

with

Note 1: "This test purpose has variants."

Variant TP_RESOURCE_GET_200v1

Objective: "Read full contents of a resource with a valid ID"

Bindings

value ID set to VALID_ID,
value HTTP_STATUS set to 200 OK

Status: TDL Evolution

- Other matters for discussion
 - Change title of TR 103 119? (still “Reference Implementation”) -> future
 - Status of Annex B in Parts 1 and 4 (“unofficial textual syntax”) -> deprecated
 - add note that it is superseded by Part 8, may be removed in the future
 - Clause renumbering to bring related parts together -> avoided for now
 - Validation operation / alternatives for data -> discuss during WG meeting
 - different scenarios for the specification of data alternatives
 - introduce dedicated constructs vs guidelines for existing features

Task 2: TOP Maintenance

- Implement the elaborated workflow for RESTful API services testing from Task 3
- Provision of a TDL-TD code generator and execution engine to support the execution of RESTful API services tests
- TOP maintenance in accordance to updates of its base software (Eclipse)
- Resolving open CRs and alignment of TOP according to TDL changes performed in Task 1

Status: TOP Maintenance

- Prototypical implementations for Part 8
 - conversion between different notations for validation -> also for migration
- Prototypes for transformation of OpenAPI and ASN.1 data definitions
- Prototypes for interpreter/code generator for tests for RESTful APIs
- Prototype for transforming TOs/TPs to TDs
 - data, configuration, behaviour stubs

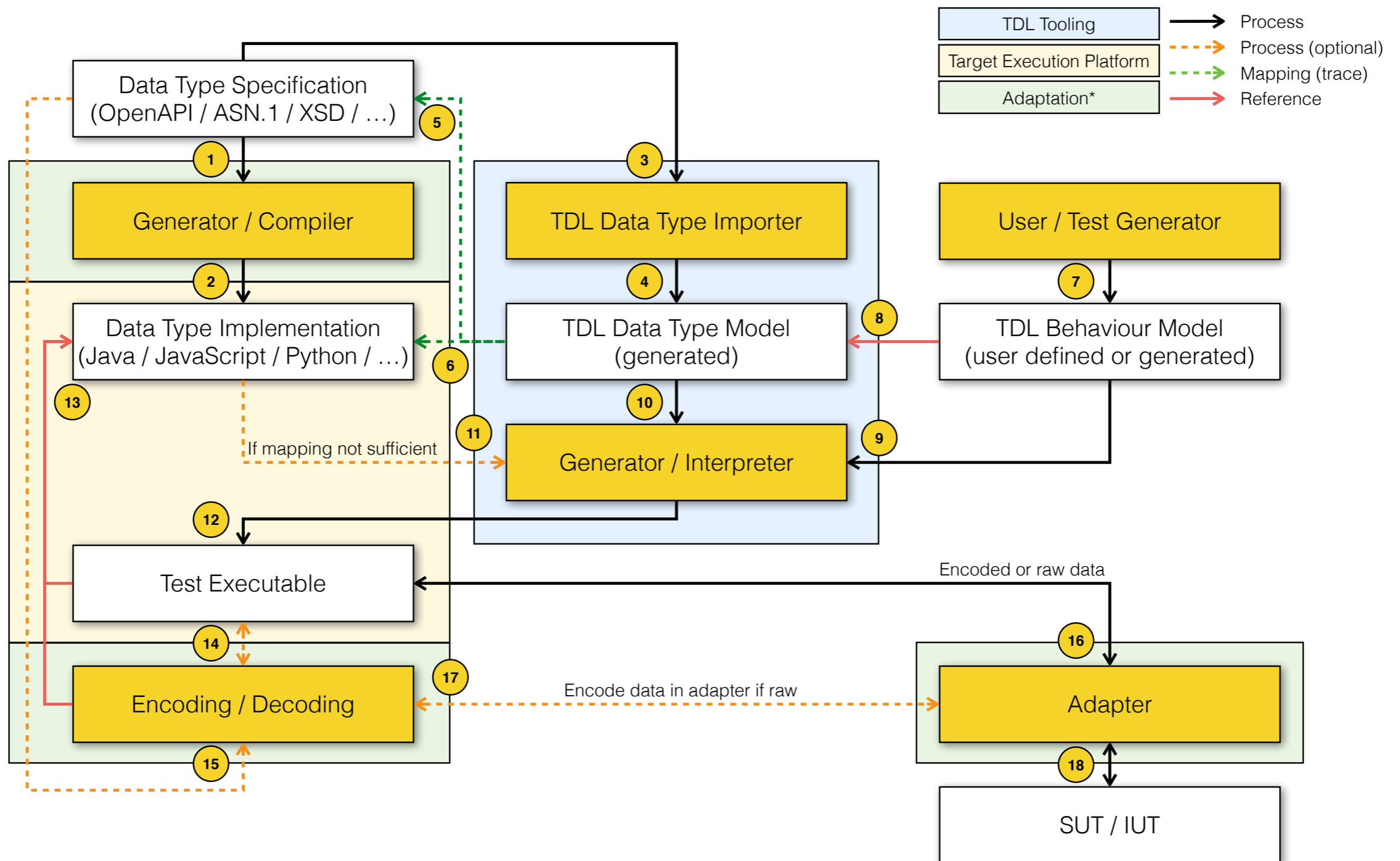
Task 3: Methodology

- Elaborate a defined way to derive TDs from TOs and provide guidelines for a semi-automatic workflow
- Elaborate a workflow to specify TOs/TDs for RESTful API services starting from an OpenAPI specification in accordance with EG 203 647
- Demonstrate and describe the application of TOP for RESTful API Services testing
- Update online documentation, wiki, examples -> to be merged
- Solicitation of requirements for describing tests of AI systems and ML models

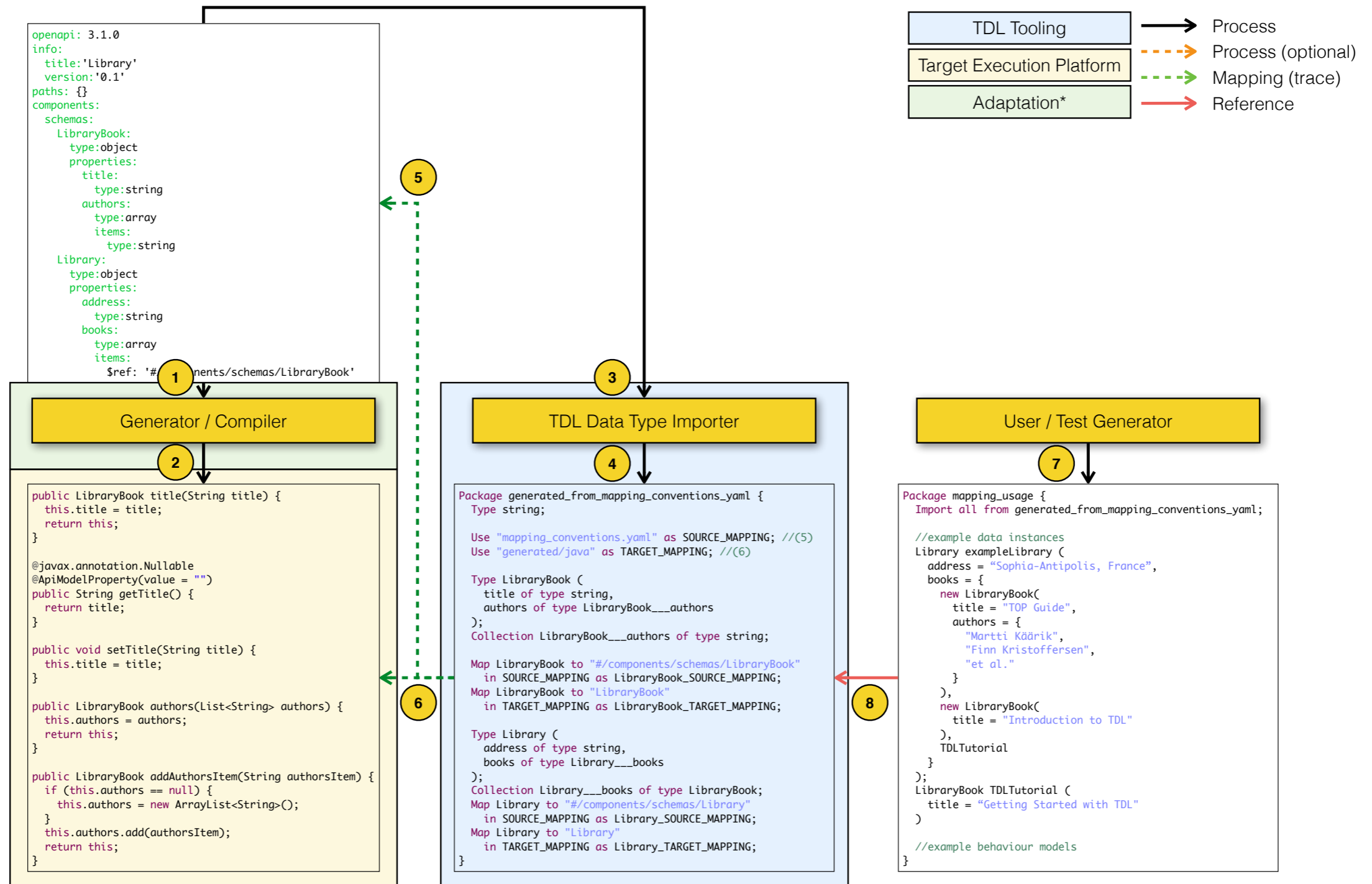
Status: Methodology

- Conventions for the derivation of TDs from TOs
 - data, configuration, behaviour
 - alternative syntax TP-like syntax for TDs in Part 4
- Conventions for the derivation of TDL data from OpenAPI / ASN.1
 - overall framework applicable to other kinds of data specifications as well
- Framework for executing TDL specifications for RESTful API tests
 - parts may be subject to normative work in the future, e.g. TRI

Status: Methodology



Status: Methodology



Status: Methodology

```
NodeDescriptor ::= SEQUENCE
{
  aNodeName NodeName, -- Node name
  aShortName UUID, -- Short node name
  aNode CHOICE
  {
    aLink SEQUENCE
    {
      aLinkedFileIdentity NodeIdentity, -- Identity of the linked SSP file
      aLinkedFileSize FileSize -- Size of the linked SSP file
    },
    aFile SEQUENCE
    {
      aFileSize FileSize -- Size of the SSP file
    },
    aDirectory SEQUENCE
    {
  },
  aMetaData SEQUENCE OF MetaDatum OPTIONAL, -- Optional meta data
  aACL SET OF AccessControl OPTIONAL -- Access Control List attribute
}

/* Node identity */
NodeName ::= UTF8String (SIZE(1..16)) -- node name encoded in UTF-8
NodeReference ::= SEQUENCE (SIZE(1..6)) OF NodeName -- pathname and node name

NodeIdentity ::= CHOICE
{
  aShortName UUID, -- UUID of file reference using absolute pathname
  aNodeReference NodeReference -- Node reference
}
}
```

```
Type NodeDescriptor (
  aNodeName of type NodeName ,
  aShortName of type UUID ,
  aNode of type NodeDescriptor___aNode ,
  optional aMetaData of type NodeDescriptor___aMetaData ,
  optional aACL of type NodeDescriptor___aACL
) ;
Type NodeName with {
  UTF8String ;
} ;
Collection NodeReference of type NodeName ;
Type NodeIdentity (
  aShortName of type UUID ,
  aNodeReference of type NodeReference
) with {
  CHOICE ;
} ;
Type NodeDescriptor___aNode (
  aLink of type NodeDescriptor___aNode___aLink ,
  aFile of type NodeDescriptor___aNode___aFile ,
  aDirectory of type NodeDescriptor___aNode___aDirectory
) with {
  CHOICE ;
} ;
Type NodeDescriptor___aNode___aLink (
  aLinkedFileIdentity of type NodeIdentity ,
  aLinkedFileSize of type FileSize
) ;
Type NodeDescriptor___aNode___aFile (
  aFileSize of type FileSize
) ;
Type NodeDescriptor___aNode___aDirectory ( ) ;
Collection NodeDescriptor___aMetaData of type MetaDatum ;
Collection NodeDescriptor___aACL of type AccessControl ;
```

ASN.1 Data Definitions

TDL Data Definitions (imported)

Status: Methodology

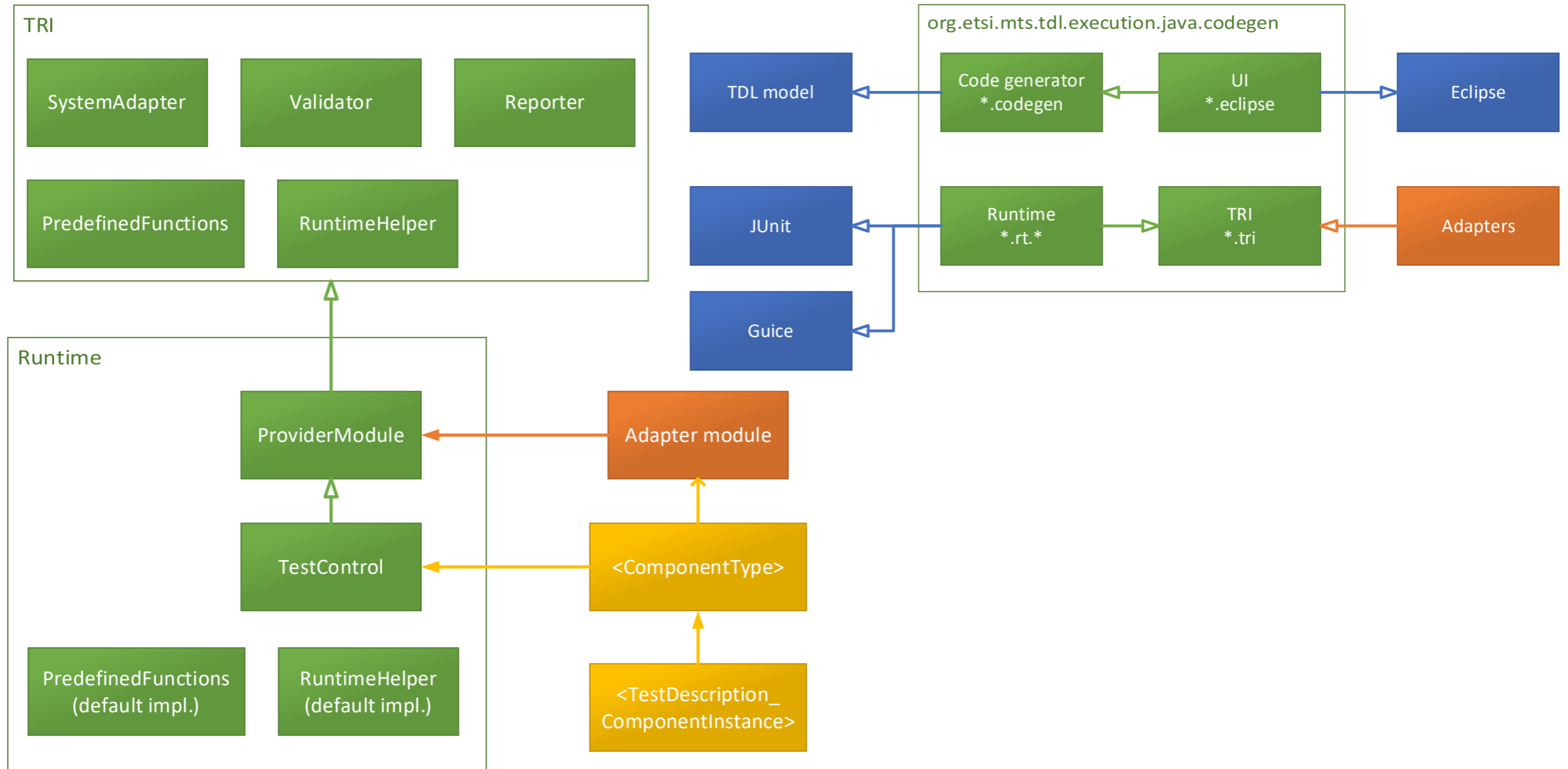
the IUT entity receives a SUBSCRIBE message containing TO (inline data)
payload containing
 filterLength corresponding to TOPIC_FILTER_LEN_SEC_CVE_01,
 topic_filter corresponding to TOPIC_FILTER_LEN_SEC_CVE_01;;
from the ATTACKER_CLIENT entity

```
Data {  
  UTF8String TOPIC_FILTER_SEC_CVE_01; // topic filter used in TP_MQTT_BROKER_SEC_CVE_001  
  Int16 TOPIC_FILTER_LEN_SEC_CVE_01; // corresponds to lengthof(TOPIC_FILTER_SEC_CVE_01) + 1  
}
```

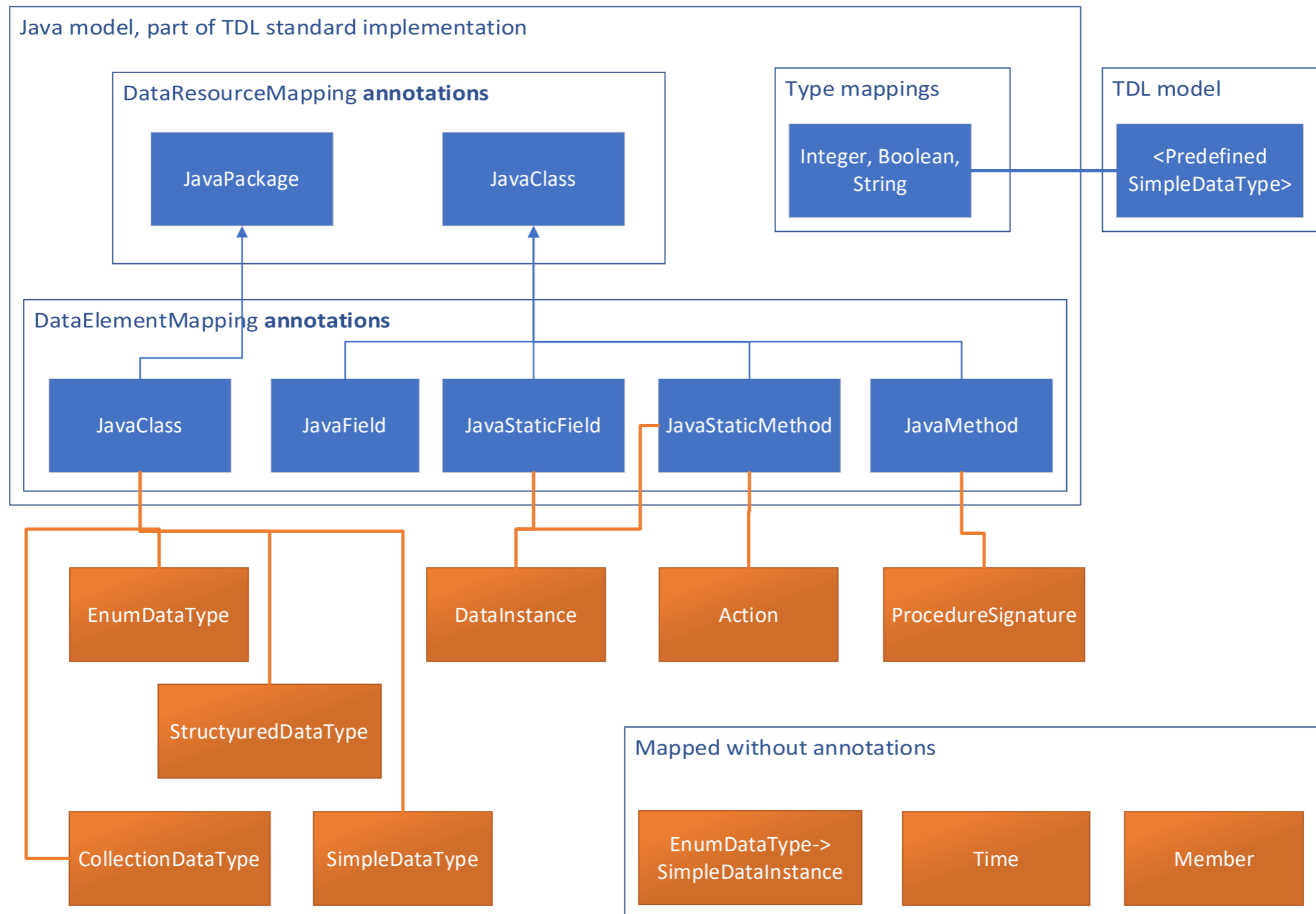
```
Type SUBSCRIBE_message (  
  payload of type SUBSCRIBE_message_payload  
) ;  
Type SUBSCRIBE_message_payload (  
  filterLength of type Int16 ,  
  topic_filter of type UTF8String  
) ;
```

TDL (structured data)

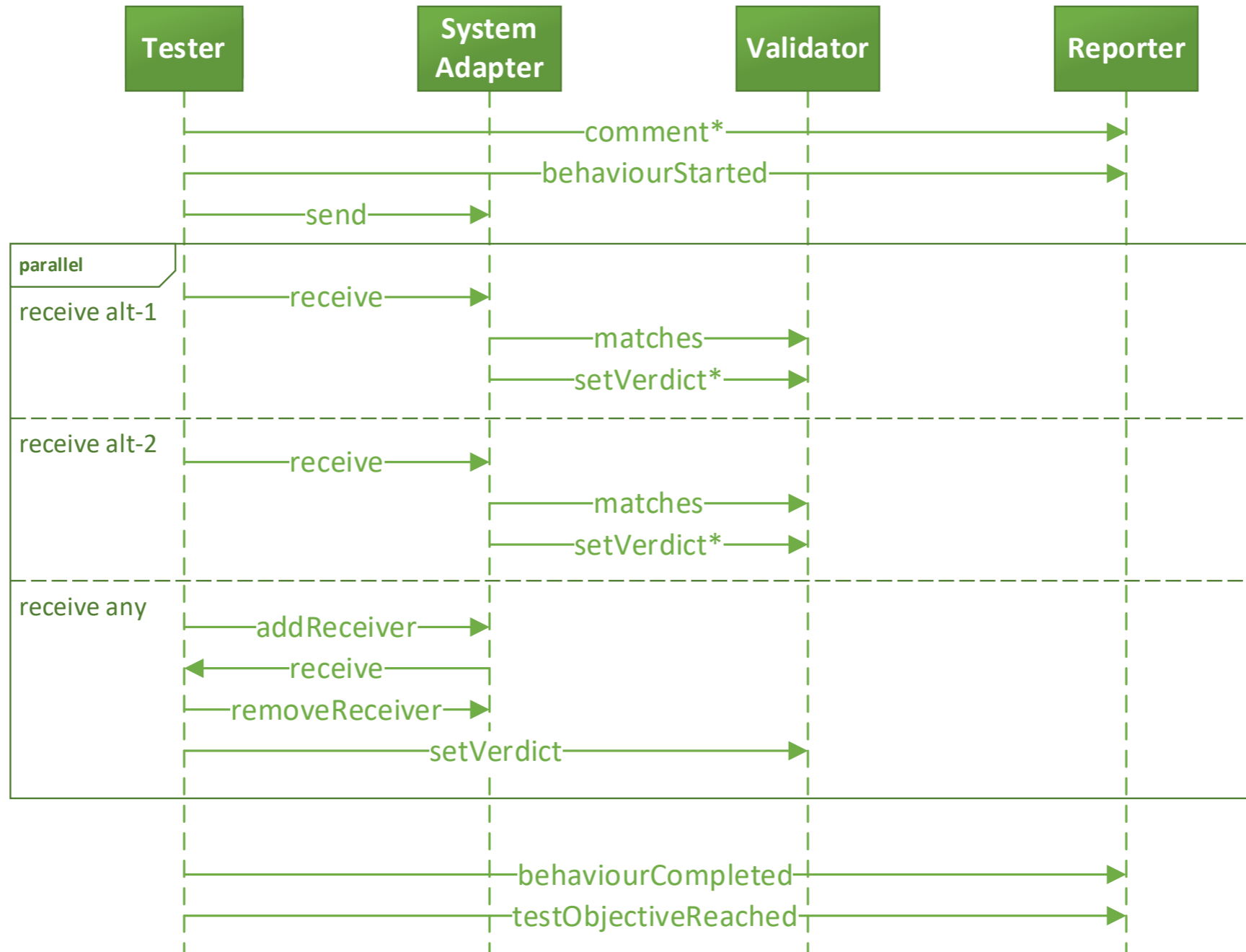
Status: Methodology



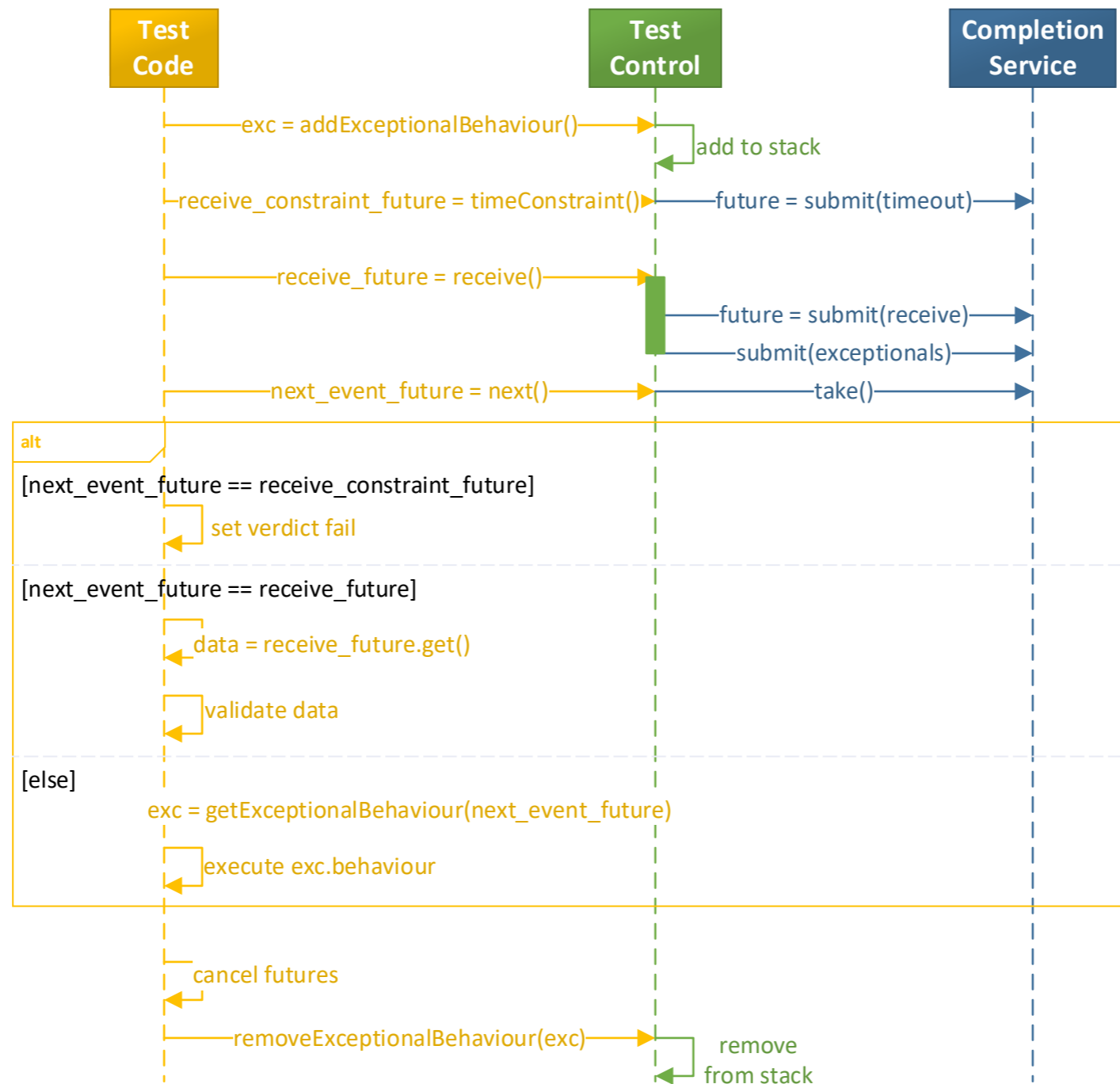
Status: Methodology



Status: Methodology



Status: Methodology



Open Questions

Informative vs Normative Work

- Some topics raise questions, may need a new home
 - OpenAPI / ASN.1 use and guidelines, TO to TD derivation, TRI
 - Use of TDs as containers for TPs -> currently syntax specialisation in Part 4
 - scope and limitations (constructs, semantics, etc.) -> currently unrestricted
 - further syntax refinements if needed
- Informative as a start -> split TR in the future (new WIs)
 - Some parts may become normative eventually (TRI)
- New contact point at CTI (due to Michele's departure)

Future

- New TTF ToR submitted, focusing on
 - Web platform for TDL and integration with NWM
 - TOP project refinements (execution architecture, code generation, UX)
 - already covered to an extent (for RESTful API testing)
 - Potential normative work: TRI, transformation rules (currently informative)
- Final ToR not yet available -> WG Chair
 - Potential delay to timeline, considering also leadership uncertainty
- TTF Roadmap needs updating

Any other business?
