



OpenPEPPOL

Erlend Klakegg Bergheim
Adviser – Department of Public Procurement
Agency for Public Management and eGovernment (Difi)

ETSI – Nice 14 June 2017



222 members

144 Certified Access Points

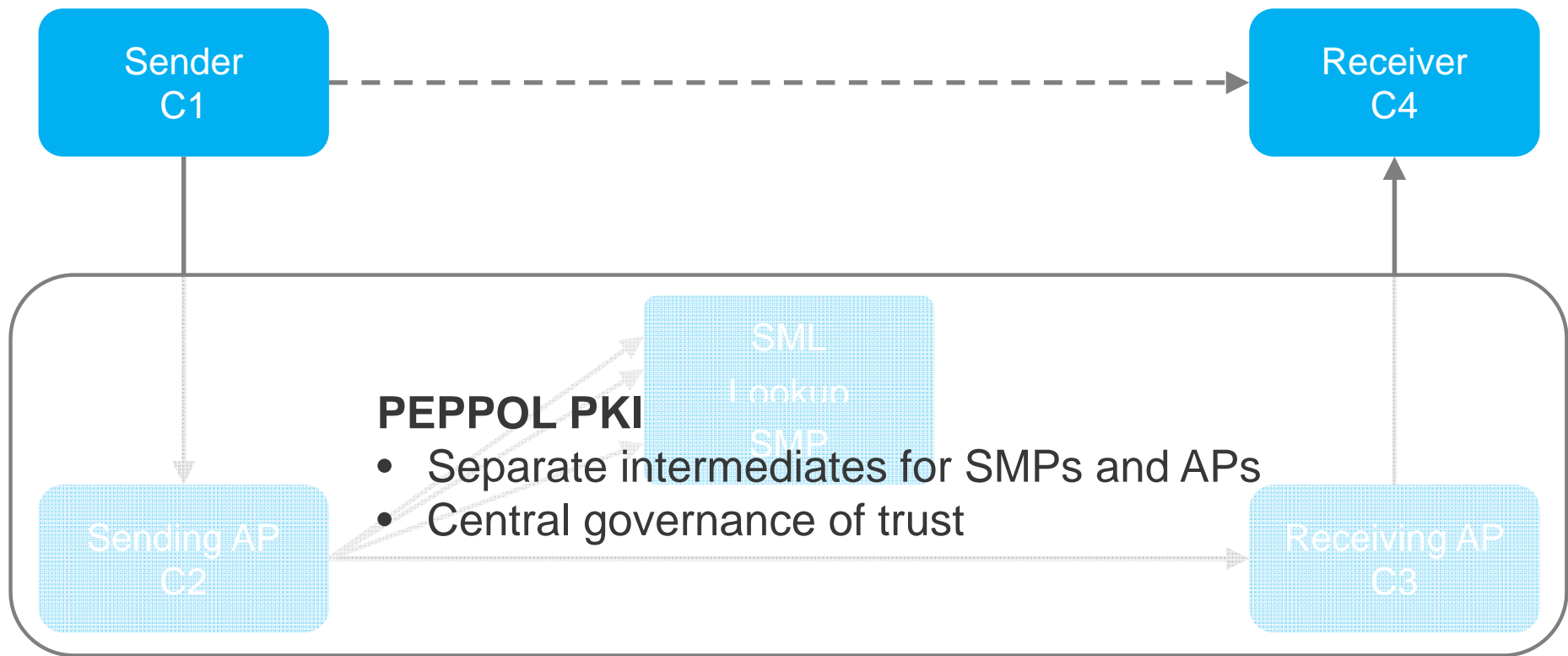
9 PEPPOL Authorities

44+ million transactions last 12 months*

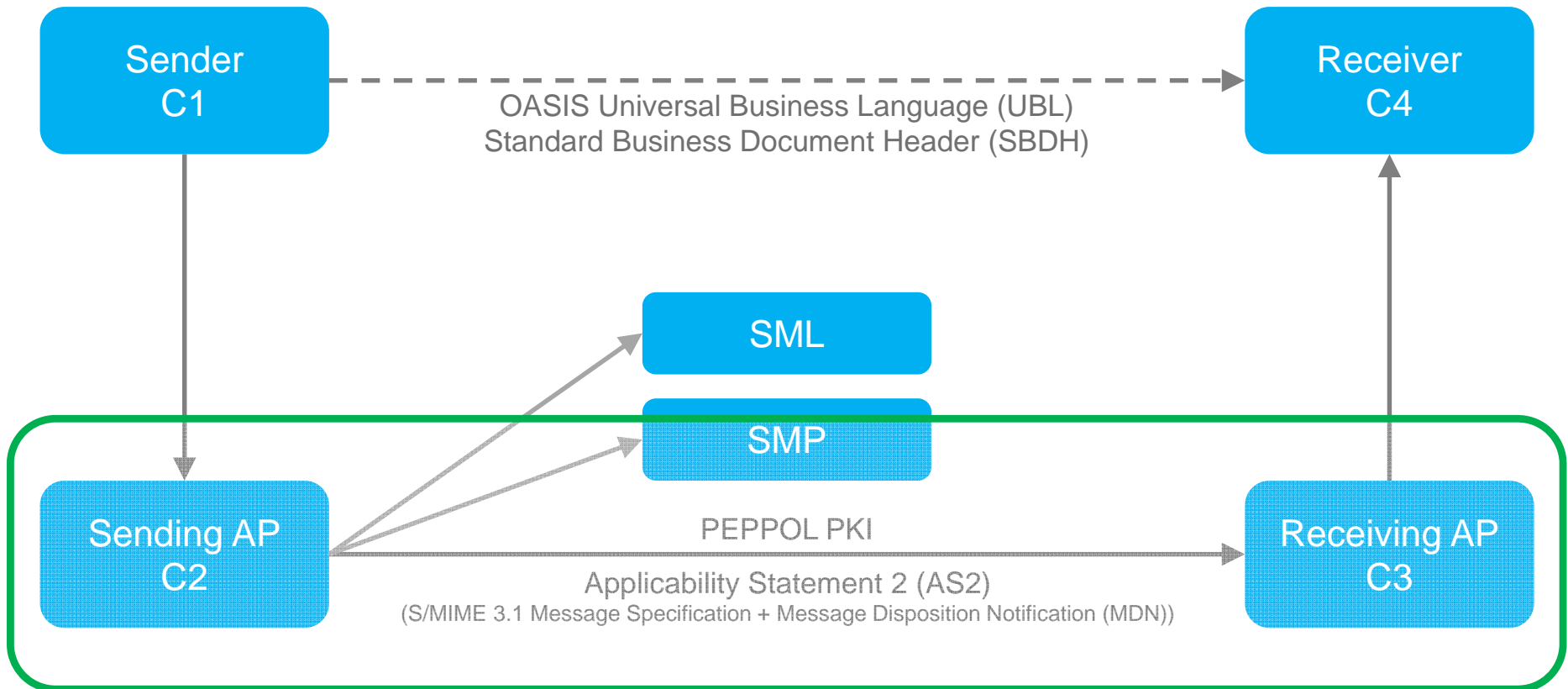
90.000+ recipients

*Norwegian statistics only

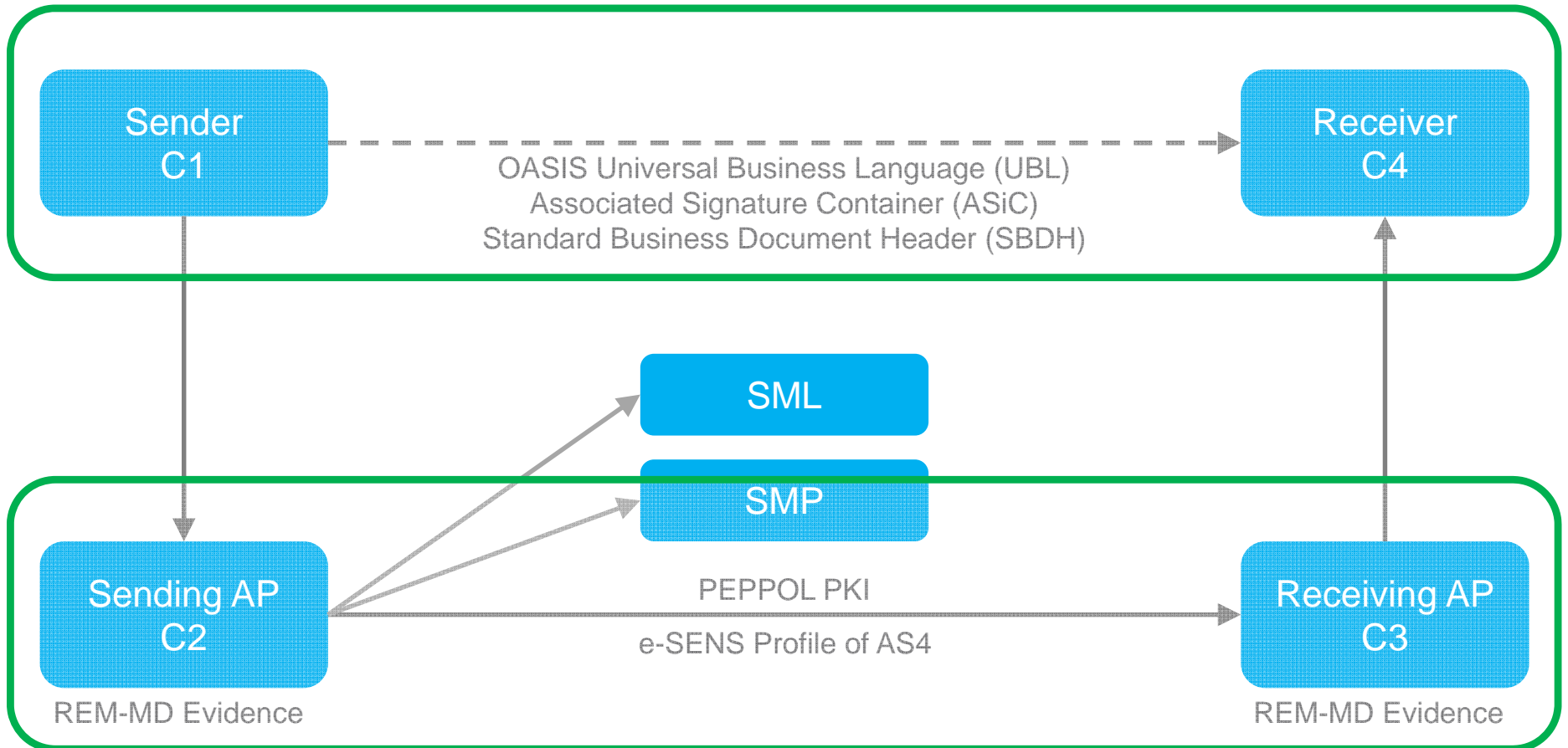
PEPPOL Trust Model



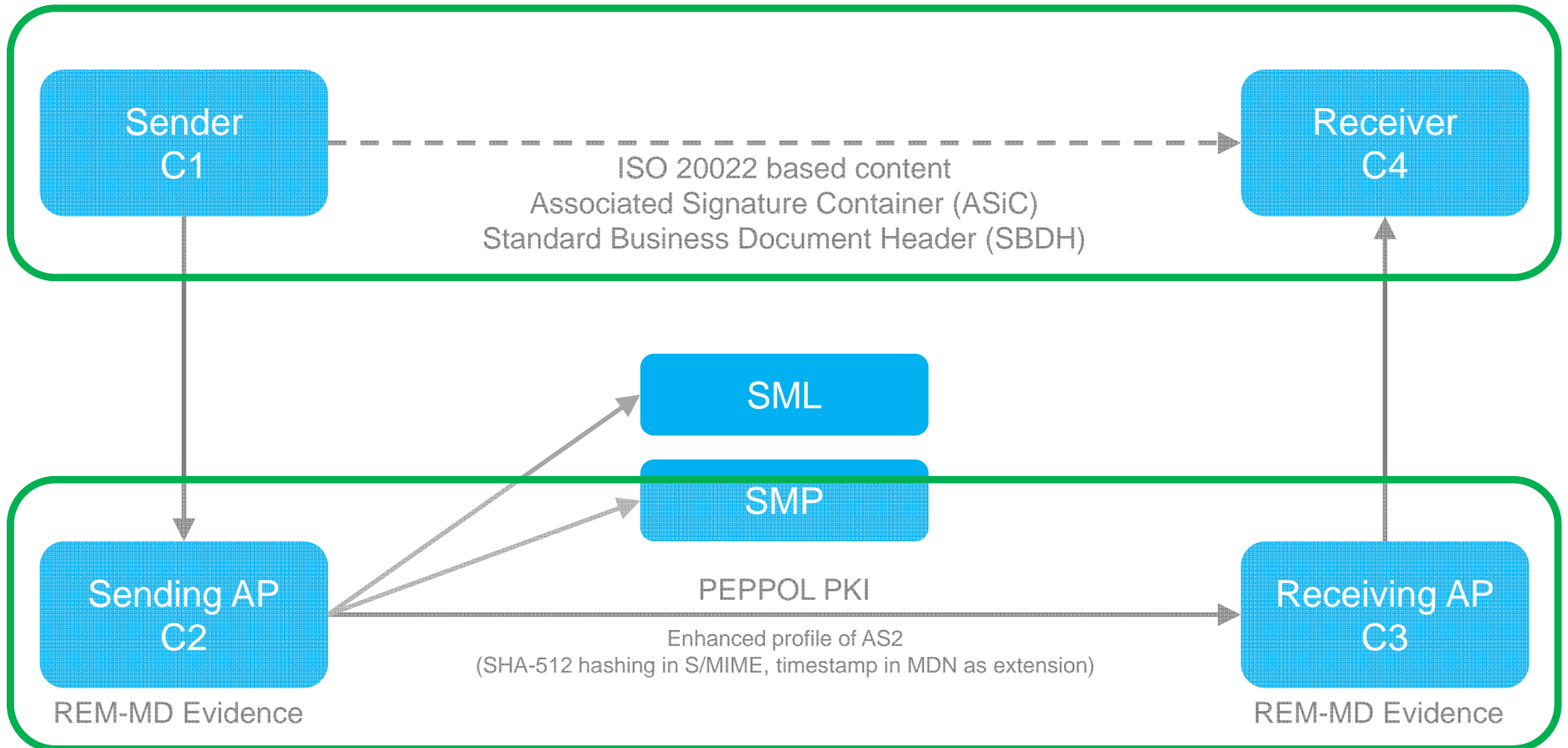
PEPPOL Post-Award (Production)



PEPPOL Pre-Award (Test)



PEPPOL Payment (Test)



AS4 message exchange protocol transition

LoU signed between EC and OpenPEPPOL in September 2016

If and when the following conditions stated by OpenPEPPOL are met, then AS4 will be made mandatory and AS2 be made optional in the PEPPOL eDelivery Network

- ▶▶ Proven interoperability between the two major platforms Java and .NET
- ▶▶ Handling of message payload and attachments size in CEF AS4 profile implementations similar to PEPPOL AS2 profile implementations
- ▶▶ Reasonable effort of adding a node to the network
- ▶▶ Market readiness
- ▶▶ Adherence to all relevant technical requirements and business requirements for users of PEPPOL eDelivery

Timeline

- ▶▶ If a subset of the conditions are met by end of Q3 2017, the transition will be announced
- ▶▶ If another subset of the conditions are met by end of Q3 2018, AS4 will become mandatory from Q2 2019 and AS2 optional in the PEPPOL eDelivery Network
- ▶▶ AS2 will be kept optional until less than 20% of all transactions are done through AS2

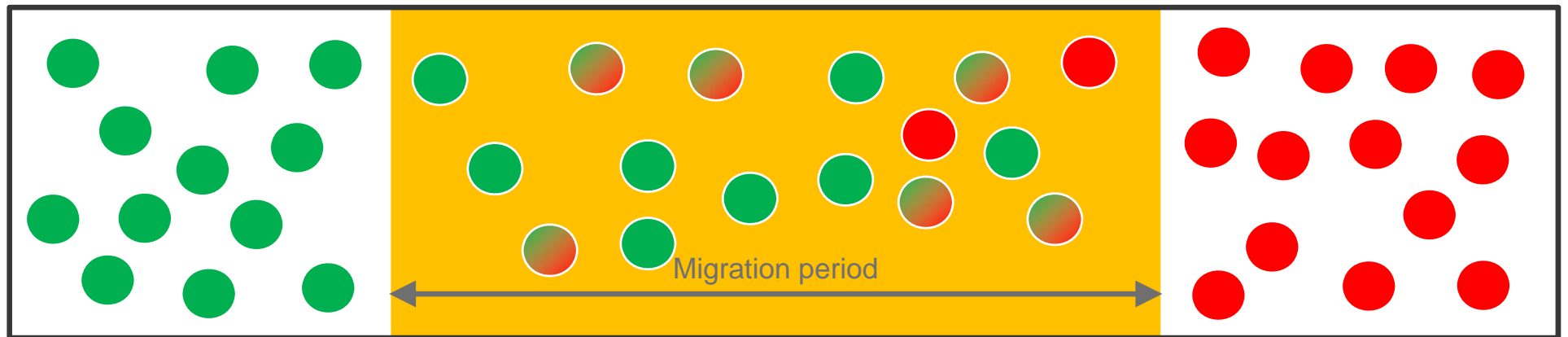
Current relevant WGs

- ▶▶ Migration to AS4 WG
 - ▶▶ Creating PEPPOL profile of AS4
- ▶▶ eDelivery Capability Extension WG
 - ▶▶ Support for large files (2 GB)
 - ▶▶ New Payload (ASiC)
 - ▶▶ Security (Enhanced AS2)
- ▶▶ PEPPOL BIS 3.0 Invoice and Credit Note WG
 - ▶▶ Creating PEPPOL BIS compliant with the EN using UBL syntax
 - ▶▶ Handling of CII syntax

Expected tasks ahead

- ▶▶ Migrating PEPPOL (BusDox) SMP to BDXR SMP
- ▶▶ Migrating PEPPOL (BusDox) SML to BDXL (enabled, not migrated)
- ▶▶ New non-UBL document types in the network

Migration





More information

E-mail: info@peppol.eu

Web address: www.peppol.eu

Follow Us

[joinup](#) [LinkedIn](#) [twitter](#)