

10th
UCAAT

**User Conference on
Advanced Automated Testing**

End to End Testing of Mobile Voice and Data Services in RAN Telecom Network

Alexandru-Răzvan Stamp

NOKIA

15/11/2023



What we do

End to end testing of mobile network software with the scope of creating problem reports:

- Operation, Administration and Maintenance
- Telecom

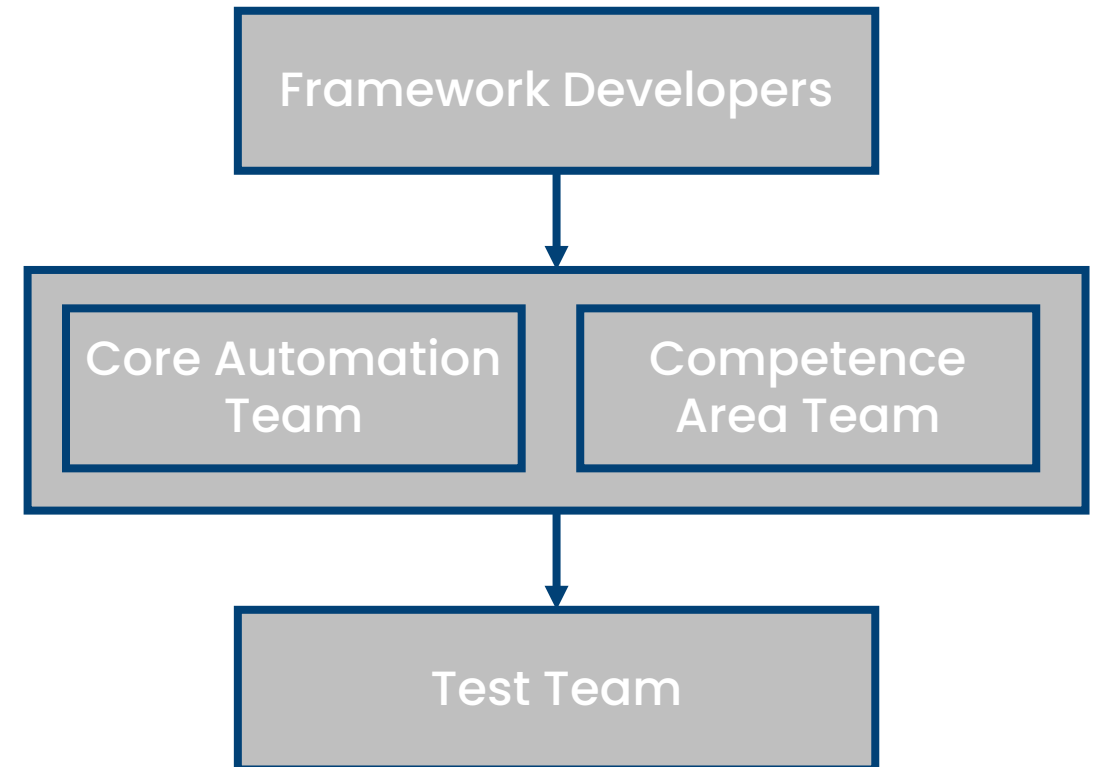
Mainly testing Base Transceiver Station (BTS) software in RF Sharing configuration (2 base transceiver stations or more can share the same radio module(s))

This presentation is covering testing of telecom features of the base transceiver station

Automation Team Organization

Implementing automated tests for regression and new feature testing for RFS Team

- Framework Developers
 - Develop libraries and tools that interface with equipment
- Automation Team
 - Develop automated tests using libraries and tools offered by framework developers
- Testers
 - Configure and execute automated tests developed by automation team



Equipment

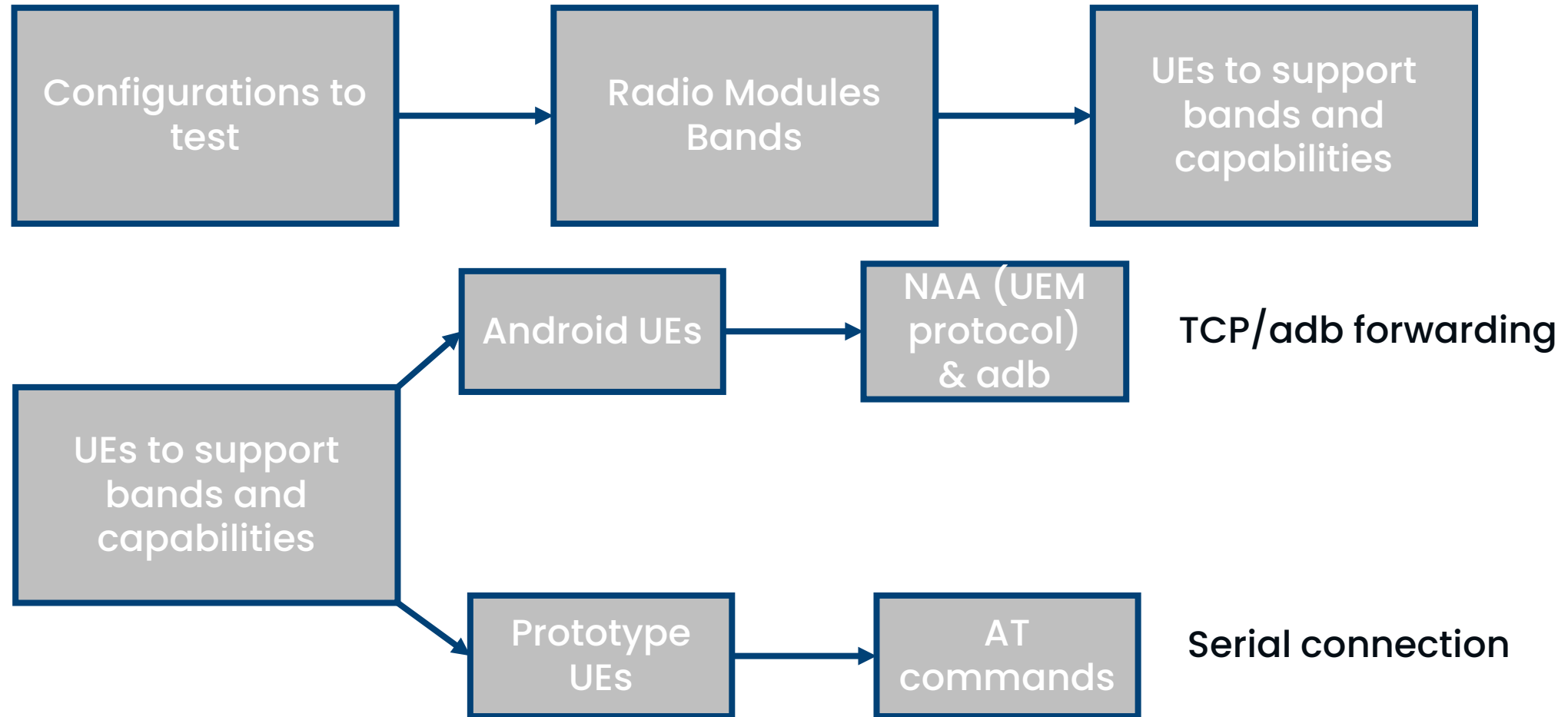
We are testing multiple technologies using multiple user equipment (UE) that work in different frequency bands.

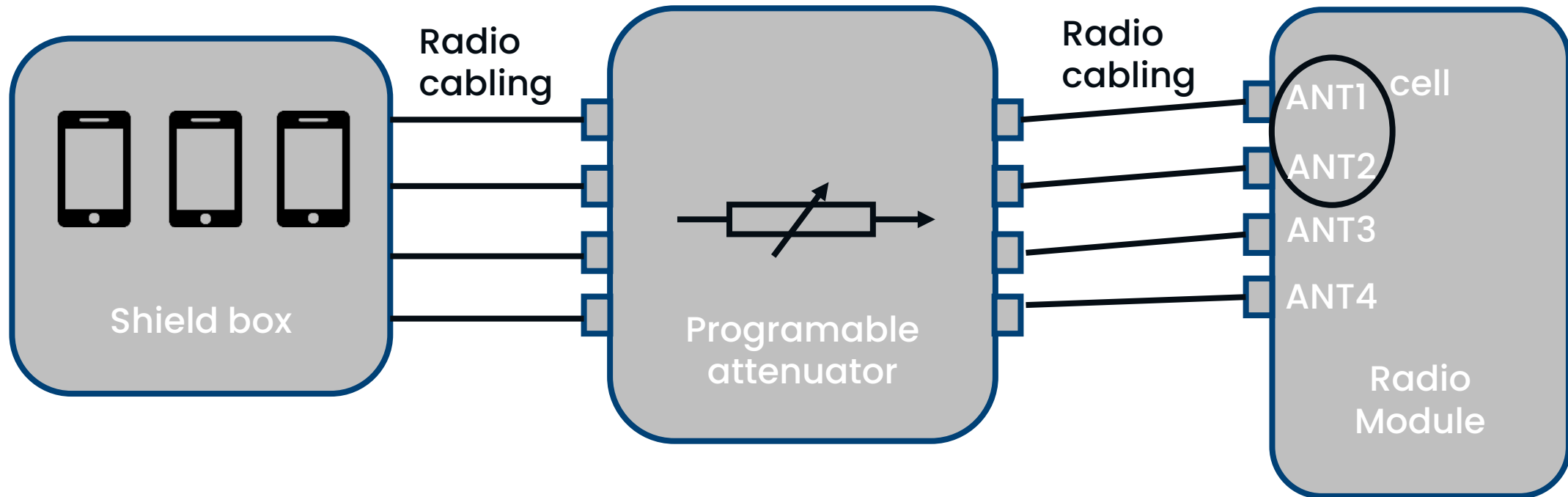
Technology	Service Tested
2G	Voice Call & Data Call
3G	Voice Call & Data Call
4G	Data Call
5G	Data Call

User Equipment used:

The word "android" in a green, lowercase, sans-serif font.The word "Qualcomm" in a blue, lowercase, sans-serif font.

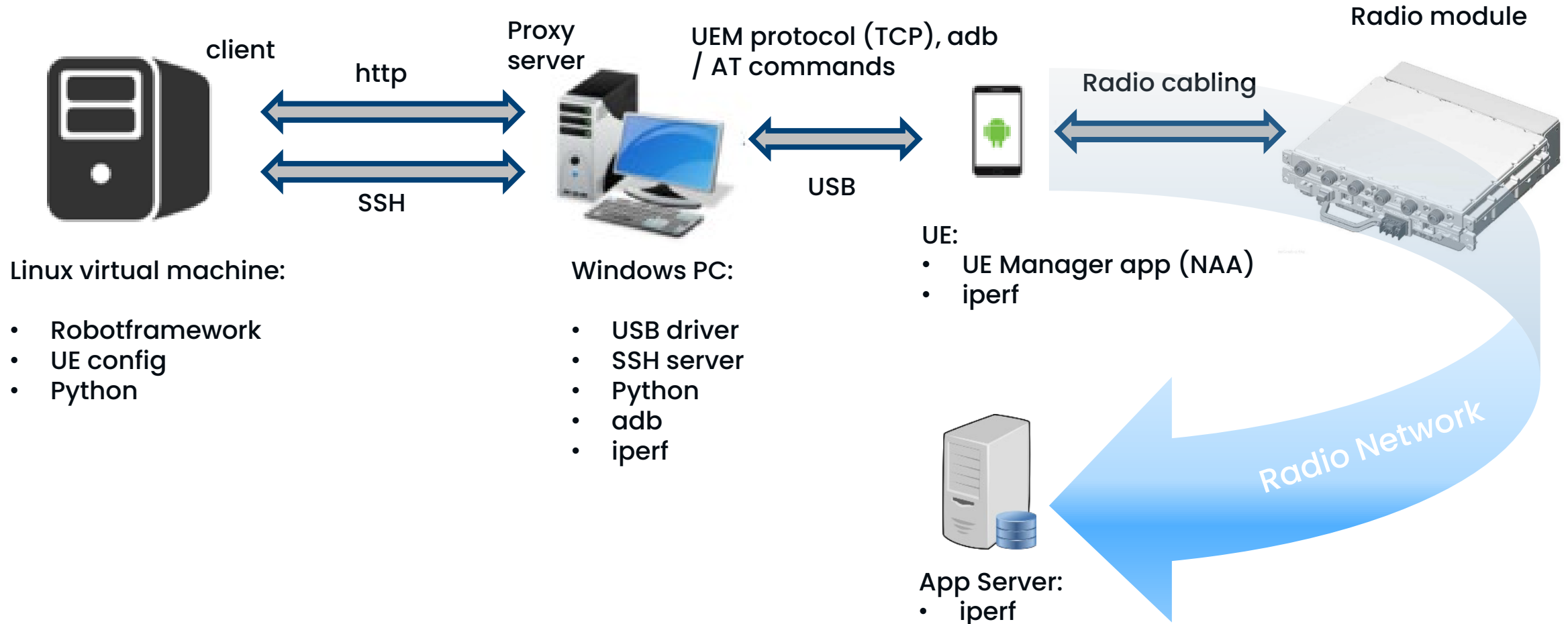
Laboratory Environment





Lab environment emulating OTA signal propagation

Automation Environment



Configuration files

Configuration information is stored under a Python defined object model.

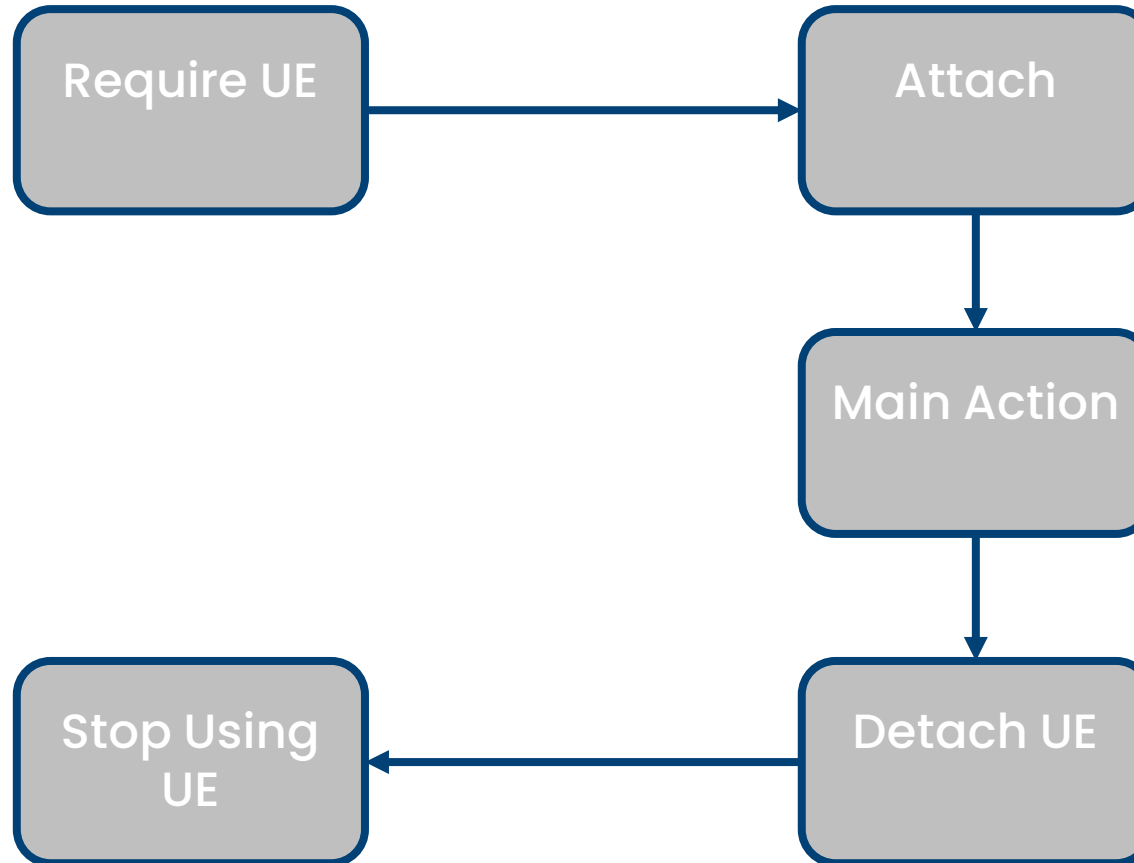
- Mobiles are split into two classes
 - Android based mobile
 - AT based mobile
- Application server class

Each class defines different attributes that we use in the automated tests.

```
class AndroidUE(UE):
    def __init__(self,
                 serial_number,
                 ue_pc_address,
                 data_transfer=None,
                 ssh_connection_details=None,
                 imei=None,
                 imsi=None,
                 capabilities=None,
                 class_name=PluginAndroidClassType.android,
                 ):
        # type: (...) -> None

class ATUE(UE):
    def __init__(self,
                 com_port,
                 ue_pc_address,
                 data_transfer=None,
                 ssh_connection_details=None,
                 imei=None,
                 imsi=None,
                 capabilities=None,
                 class_name=PluginAndroidClassType.at,
                 ):
        # type: (...) -> None
```


Call Test Flowchart



Require & Attach

Require UE:

Input:

- ue alias
- ue capability

Require UE

Search UE that fulfills capability and it's reachable

UE pool from config

___ UE1
___ UE2
___ UE3
...

UE found?

YES

Continue test with selected UE

NO

UE pool search completed ?

YES

FAILURE no UE available

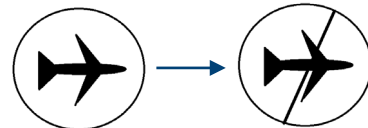
NO

Search another UE that fulfills capability and it's reachable

Attach UE:

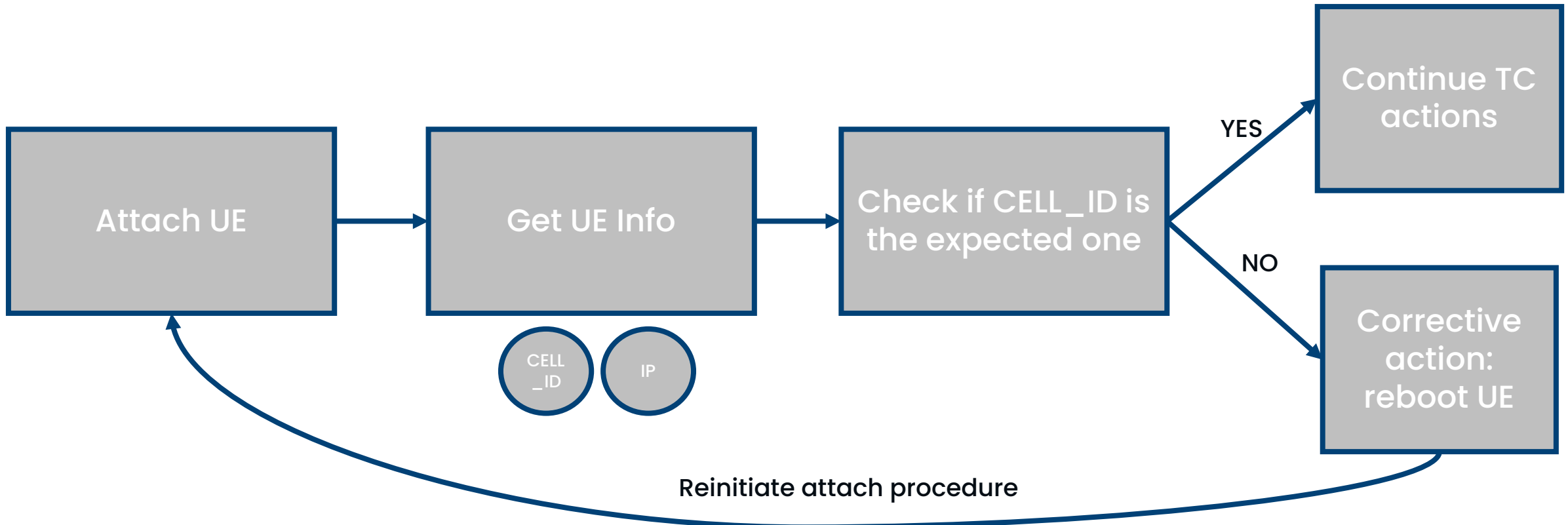
Input:

- ue alias



Inputs:

- ue alias
- info(e.g. CELL_ID, IP)



Data Transfer

Inputs:

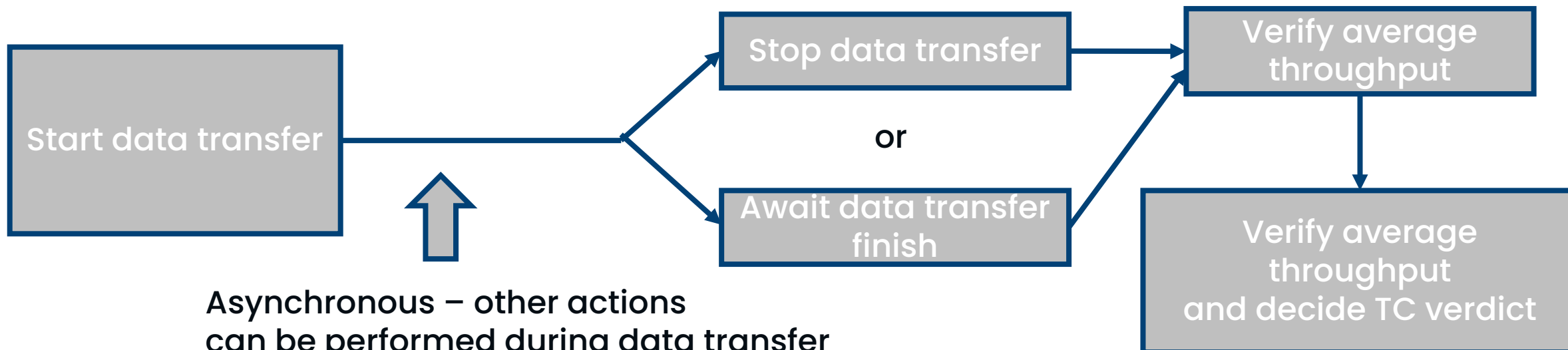
- ue alias
- dt alias
- direction (UL, DL or both)
- duration
- protocol (UDP/TCP/ICMP etc)

Input:

- dt alias

Inputs:

- dt alias
- min value accepted
- max value accepted



Asynchronous – other actions can be performed during data transfer session

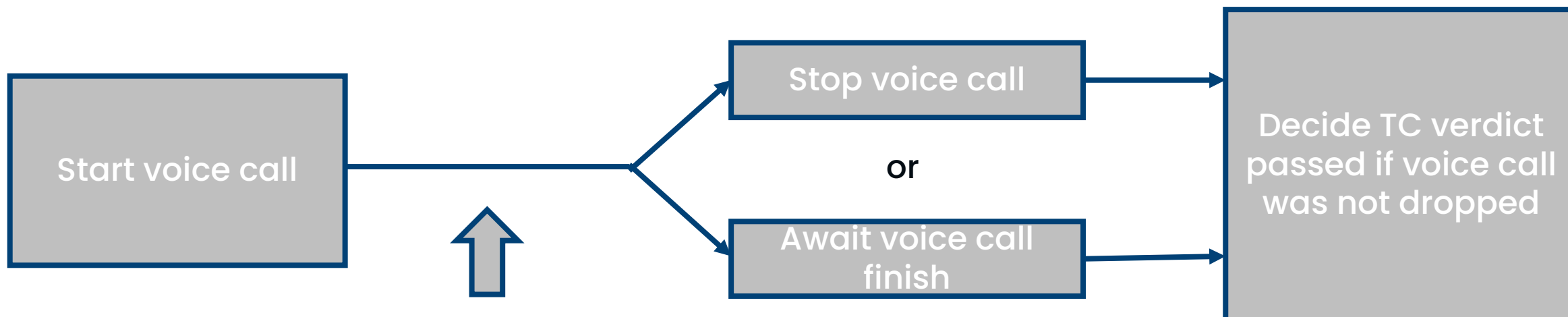
Voice Call

Inputs:

- ue alias
- vc alias
- duration
- to (destination number)

Input:

- vc alias



Asynchronous – other actions can be performed during voice call session

Detach & Stop Using UE

Detach UE:

Input:

- ue alias

No further actions can be done with the mobile after detach

Stop Using UE:

Input:

- ue alias

Frees all allocated resources. Can be reused from the mobile pool

Mobility Testing

Select cell(s) by using a programable attenuator (by attenuating unwanted cells).

- Allows testing on multiple cells
- Allows simulation of cell changing

Executed using a library that allows control of multiple programmable attenuators.

Testcase Verdict

Test verdict will be passed if:

- Throughput values are in the selected interval
- Voice call did not drop
- Call performed on desired cell

Logs used for manual investigation of failed cases:

- Robot Logs
- Library Logs
- BTS Logs

Any further questions?

alexandru.stamp@nokia.com
gabriel.stanculescu@nokia.com

