

# Model-Based Testing in the Cloud

Antti Huima

CTO

Conformiq Inc.

# Conformiq in Nutshell

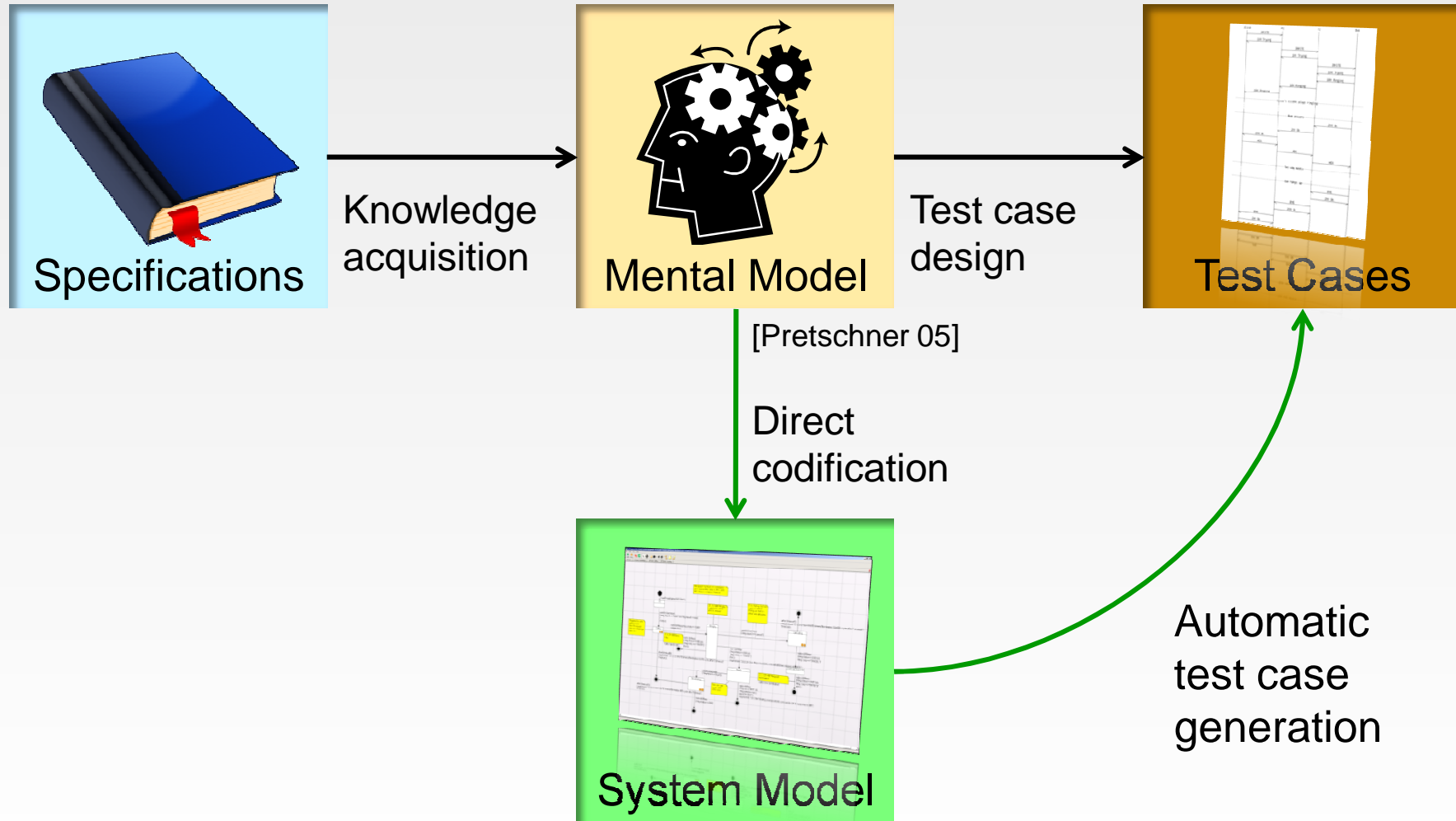
## Who We Are

- Privately held high-technology company
- Offices in US, Sweden, Finland and Germany; partner presence in India

## What We Deliver

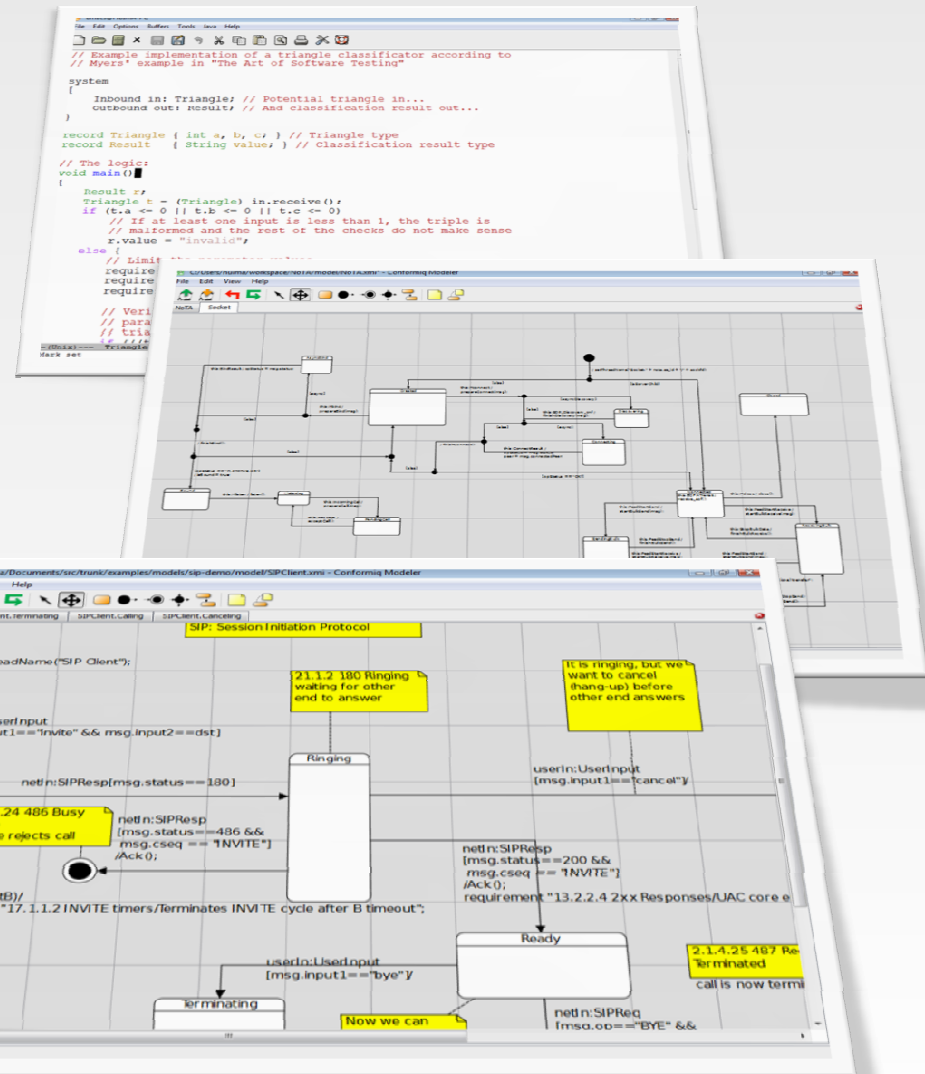
- Software for **Automated Test Design™**
- 5X to 20X productivity gain in **test design** with improved test coverage and quality
- Focus on black-box functional and feature testing

# System Model Driven Test Generation

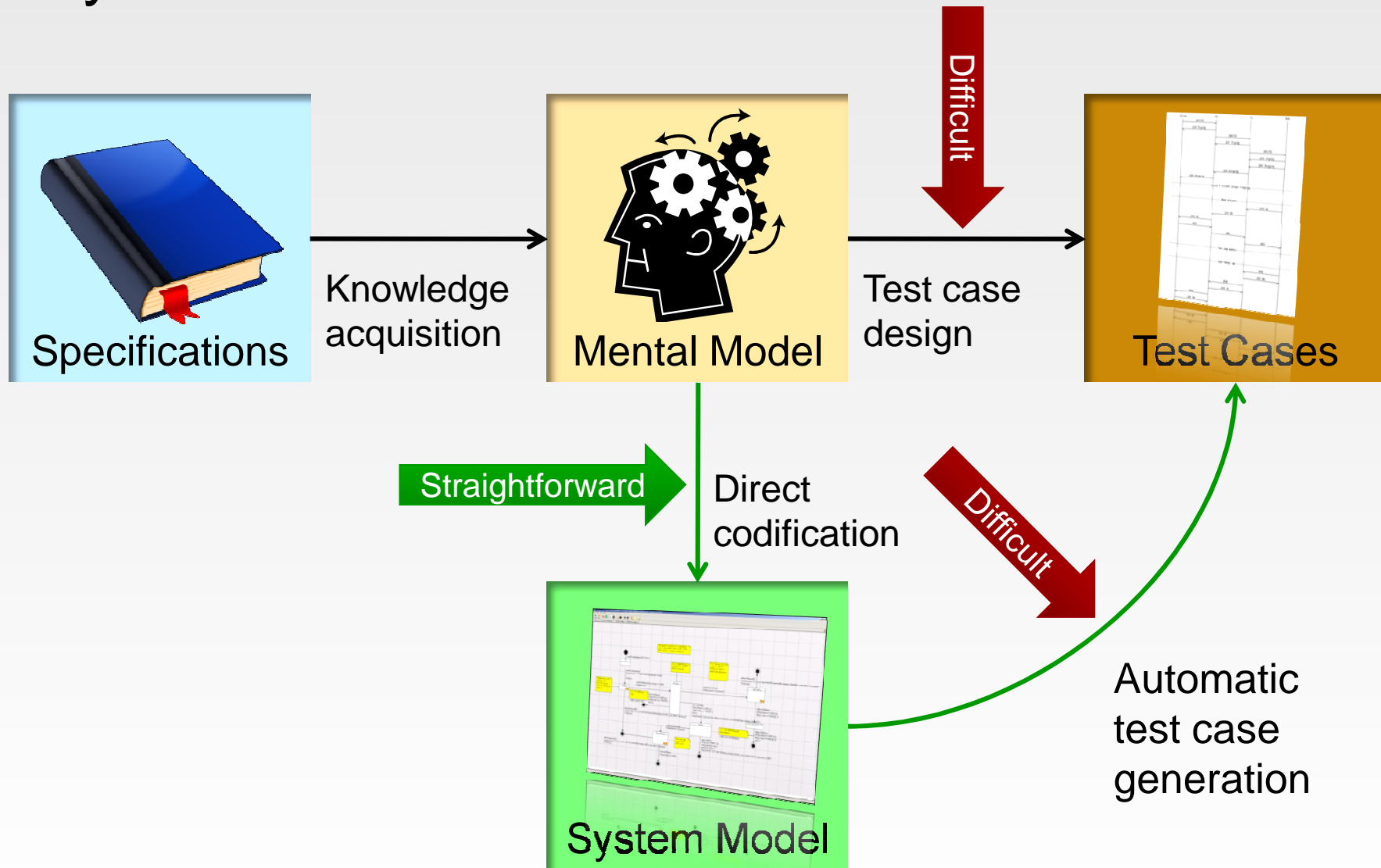


# System Model...

- Computer-readable
- Describes the correct operation of the system
- Small and high-level
- Easy to modify
- Has same level of abstraction as the test harness
- An object-oriented computer program



# System Model Driven Test Generation



# Test Generation from System Models

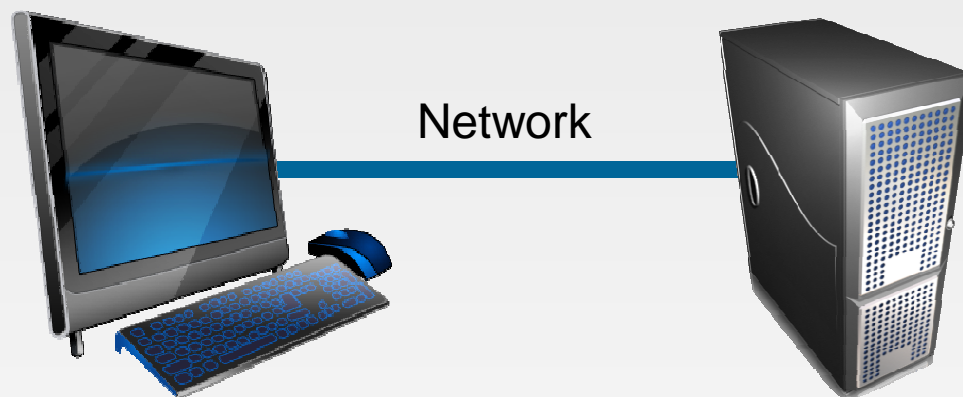
## Benefits

- Productivity improvement (we have measured consistently five-fold productivity improvement in test case design in industrial projects)
- Direct correspondence between specifications and system models

## Difficulty

- Algorithmic complexity (depending on assumptions) is
    - NP-hard
    - PSPACE-hard
    - Non-elementary
    - Undecidable
- Performance is a general bottleneck and hindrance for adoption

# Conformiq's Test Generation Solution



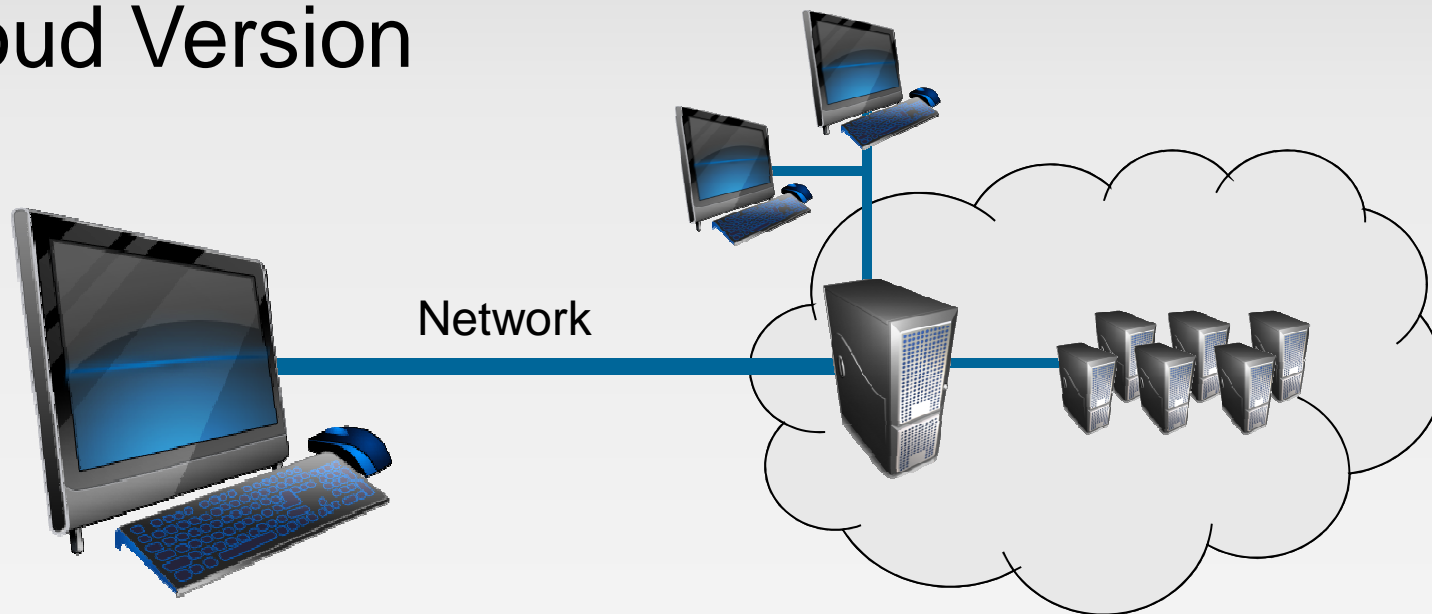
IDE for automatic  
test design

Eclipse® based  
desktop application

Server component  
for test generation  
mathematics

Multicore-enabled  
service

# The Cloud Version



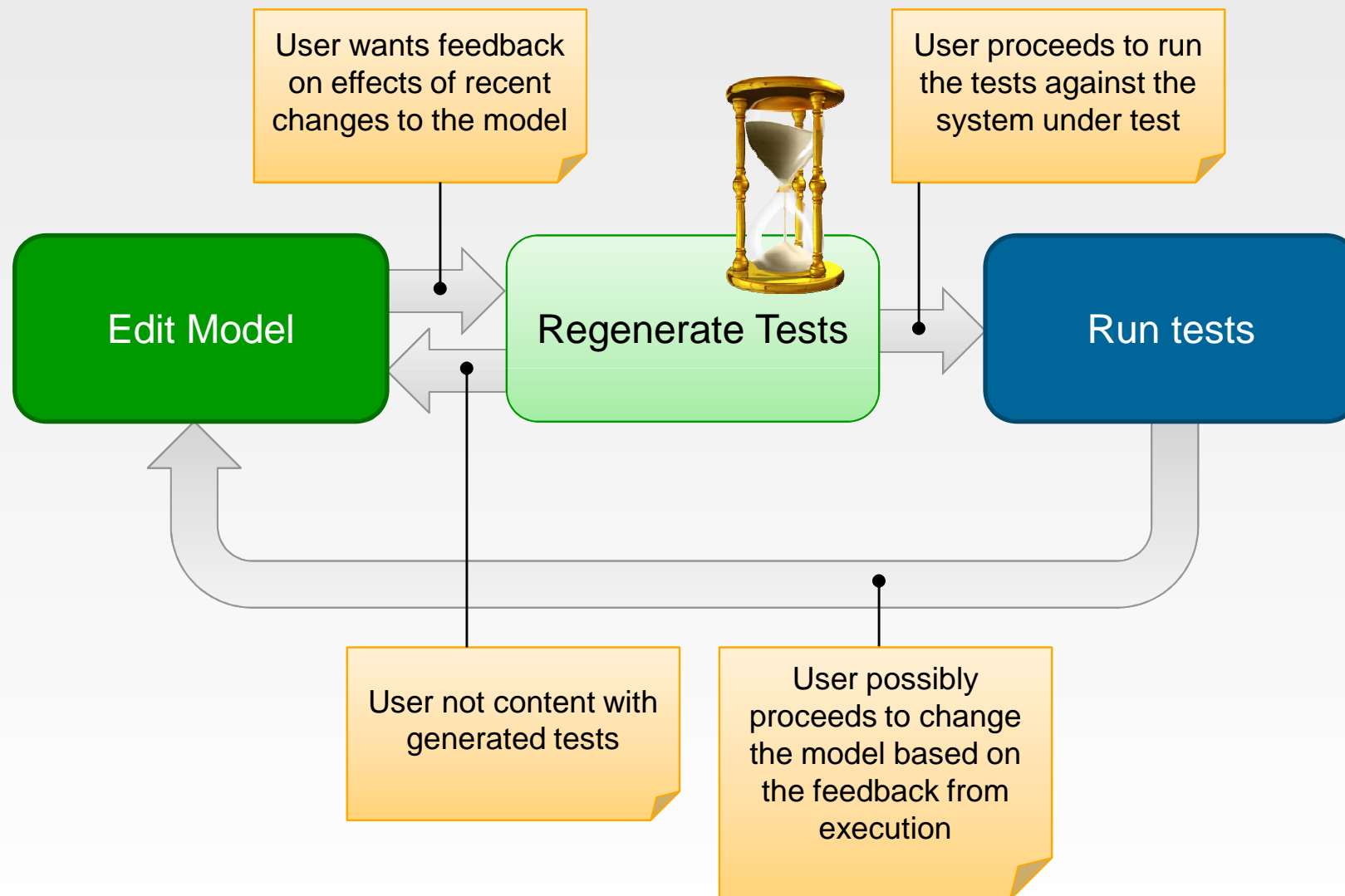
IDE for automatic test design

Eclipse® based desktop application

Distributed, parallel computation architecture for test generation



# Typical Use During Test Development



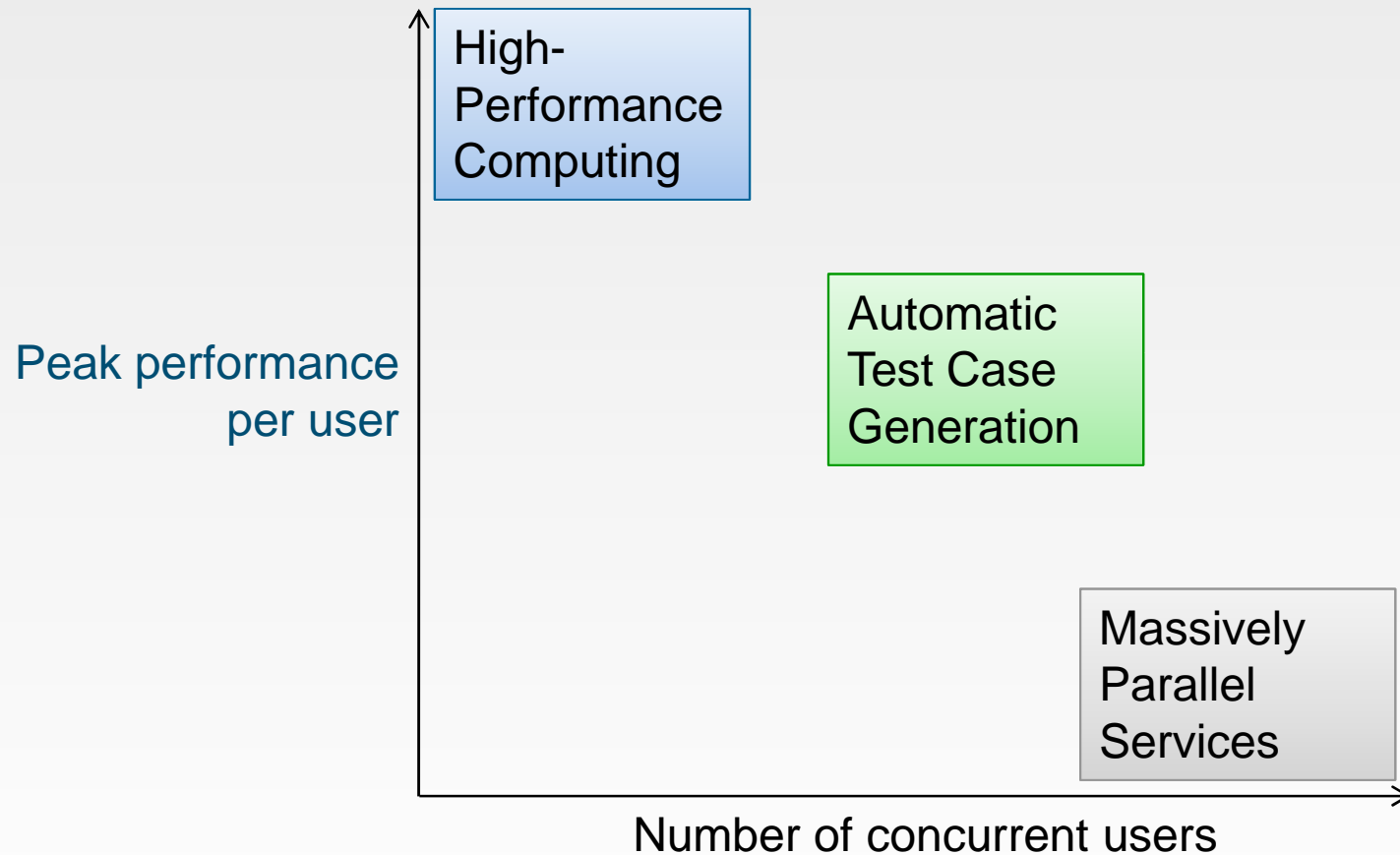
# Problem Characteristics

- Test generation with the current approach scales algorithmically well to 20 – 100 CPUs based on the system model's complexity
- Typical test generation times on single workstation range from 10 minutes to 6 hours
- In a mature deployment, it seems that roughly  $\frac{1}{4}$  of test engineers are primary users of the technology, with another  $\frac{1}{4}$  having a supportive role
- Quick turn-around time in test generation is important for the general efficiency of the team
- Usage is somewhat sporadic, i.e. test generation activity can be high or low depending on the current project's stage

# Benefits of the Cloud Approach

- Enables high peak performance and fast test generation turn-around time, making automated test design teams more productive
- When deployed in a flexible, elastic cloud, reduces capital expenditure as the peak use can be tolerated without reserving the computational power permanently

# Scalability via Cloud Computing



# Standardization Perspective

- We use currently CORBA (an OMG standard) as the middleware, and the standards-driven interoperability between the Java ORB and ACE/TAO (a C++ ORB) is crucial for us
  - WSDL/SOA/XML is the key to many of the present grid/cloud computing technologies, but CORBA is faster and has less overhead than the web services stack, making it suitable not only for configuration but also for runtime data exchange
  - At the same time, traditional HPC-standards for distributed computing such as MPI have proven to be of only little value to us, especially because they seem to handle dynamic configurations poorly (number of CPUs changes during a single run)
- We do not use tree reduction frameworks or huge databases (cf. the Google approach)

# Summary

- Automatic test generation from system model is computationally intensive but delivers measurable and significant benefits
- Automatic test generation activity in teams is sporadic and depends on project stage
- For this problem, the cloud approach provides scalability both in terms of peak performance (test generation time) as well as in the number of (concurrent) users
- It is an interesting, new HPC application with direct applications in the everyday operations of software companies

# Contact Information

Antti Huima  
*Chief Technology Officer*  
antti.huima@conformiq.com

[www.conformiq.com](http://www.conformiq.com)

**Global Sales**

sales@conformiq.com

**Global Support**

support@conformiq.com

**United States**

*Headquarters, Sales and Support*

12930 Saratoga Av. Suite B9 | Saratoga, CA 95070

Tel: +1 (408) 898-2140 | Fax: +1 (408) 725-8405

**Finland**

*Sales, Support and R&D Center*

Westendintie 1 | 02160 Espoo

Tel: +358 10 286 6300 | Fax: +358 10 286 6309

**Sweden**

*Sales and Support Office*

Norrmalmstorg 14 | SE-11146 Stockholm

Tel: +46 852 507 094 | Fax: +358 10 286 6309