

Japan-Europe Internet Trust Symposium 2019



JCAN Trusted Service Registration

May 23rd, 2019

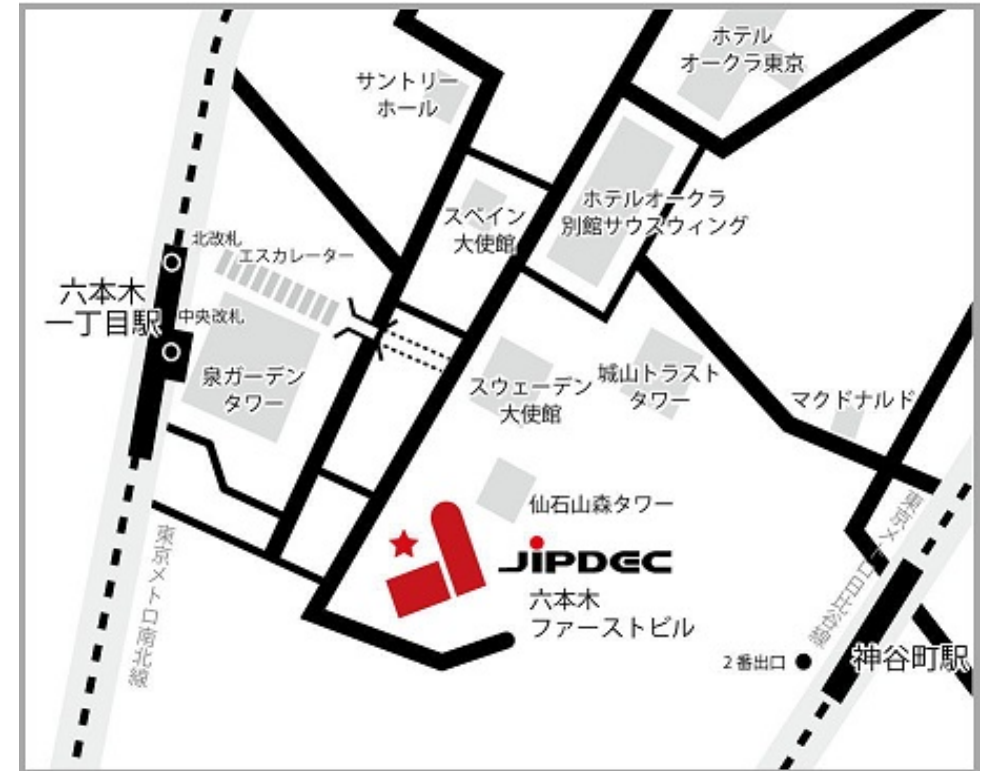
JIPDEC
Internet Trust Center

Overview

- 1. Organization Outline of JIPDEC**
- 2. Trends of Business Process and Demands of Digitalization**
- 3. Internet Trust and its Assessment**
- 4. Outline of JCAN Trusted Service Registration**
- 5. Towards the Realization of Trust**

1. Organization Outline of JIPDEC

- **Name** JIPDEC 【Corporate Number 1010 4050 09403】
- **Establishment** December 20th, 1967
- **Capital** 3,999 million yen
- **Budget** 2,424.5 million yen (FY2019)
- **Number of Employees** 93
(as of April 2019)



Introduction of Internet Trust Center

- JIPDEC promotes the technique and framework to ensure the trust of the information on the Internet.

Assessment of trustworthiness of Trust Services

Assessment of trustworthiness of Trust Services

JCAN Trusted Service Registration



Electronic Certificate of Corporate Individual

JCAN Certificate



Trustworthy Company Data

Cyber Business Register

ROBINS



“Spam-Free Mark” framework using S/MIME and DKIM

Prevent e-mail spoofing



Research to ensure the trustworthiness of Internet

Research Report for Internet Trust



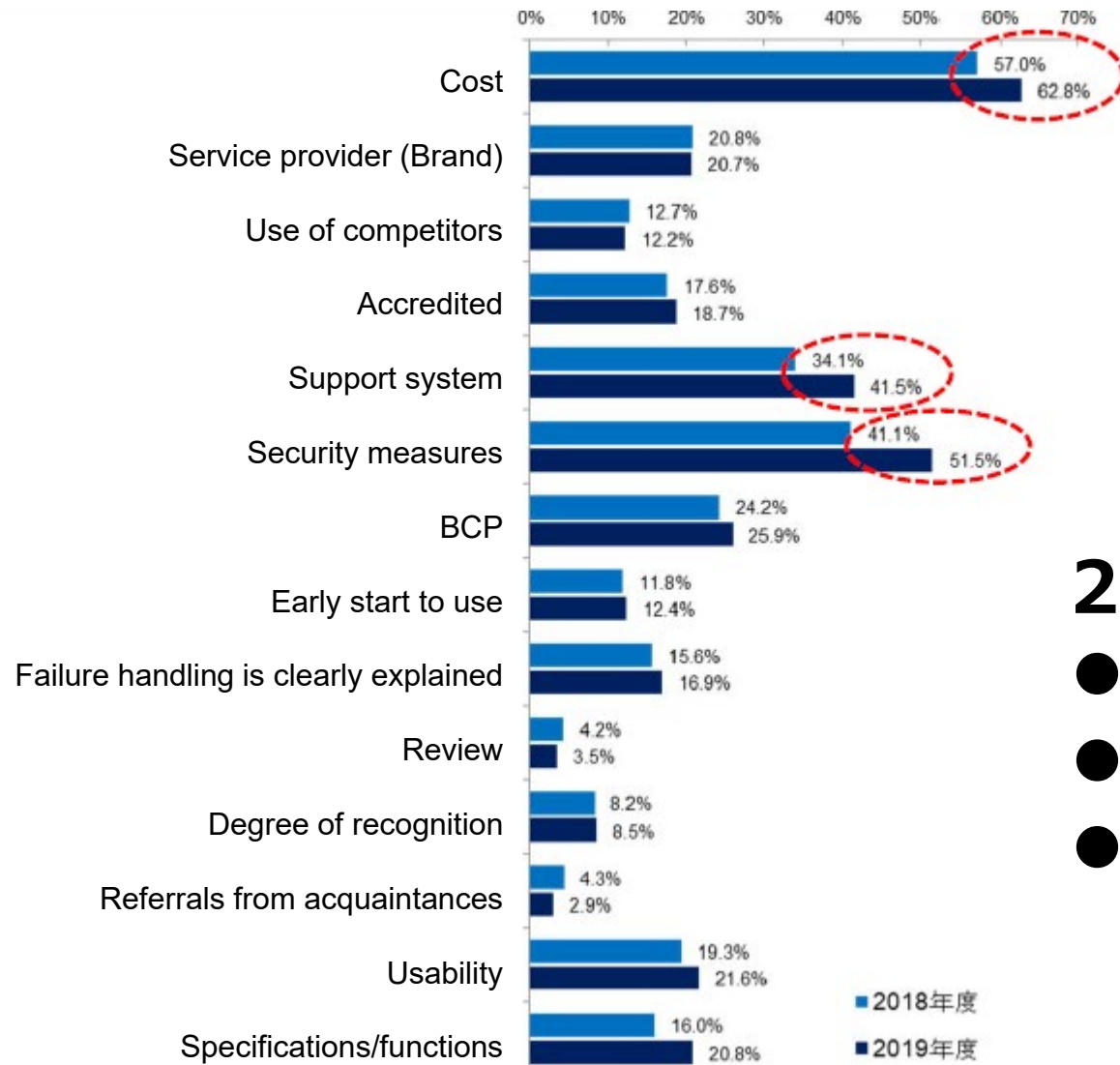
2. Changes in Companies' work flow and Demands of Digitalization

- Demands to conclude and archive contracts are high in large companies with more than 5,000 employees.

	More than 5,000 (N=139)	1,000~ 4,999 (N=156)	300 ~999 (N=168)	50~ 299 (N=223)	Whole (N=686)
Expenses (Travel/Transportation expenses)	47.5%	42.9%	44.0%	37.7%	42.4%
Expenses (Social expenses)	37.4%	35.3%	33.3%	25.1%	31.9%
Billing Process	37.4%	37.8%	39.3%	29.1%	35.3%
Order Process	39.6%	35.9%	36.3%	30.5%	35.0%
Conclusion and Archiving of Contracts	41.0%	31.4%	31.0%	25.6%	31.3%
Internal Decision Process	33.8%	36.5%	38.7%	32.3%	35.1%
Internal Request/Report Documents	23.7%	23.1%	23.8%	22.9%	23.3%
Documents management (Board meeting minutes, etc.)	18.7%	14.1%	14.3%	14.8%	15.3%
Attendance Management	24.5%	21.2%	27.4%	26.5%	25.1%
Documents management in paper(others)	12.2%	16.0%	12.5%	14.8%	14.0%

(出典 : JIPDEC IT-Report)

Deciding Factor of Cloud based Application Service



2018~2019

- Cost
- Security measures
- Support system

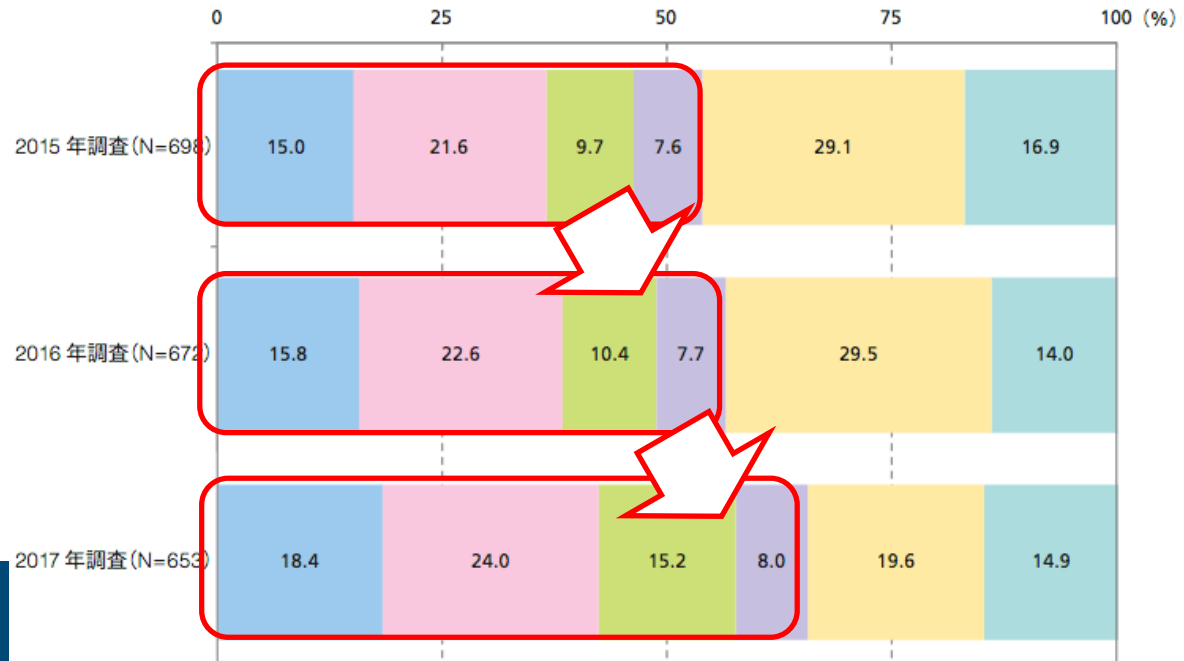
(Source : JIPDEC IT-Report)

Rapid Spreading of e-Contracting Services

■ More and more companies adopting/considering e-Contracting services.



FY	Demand	Comparison with the previous year
2015	53.9%	
2016	56.5%	104.8%
2017	65.6%	116.1%

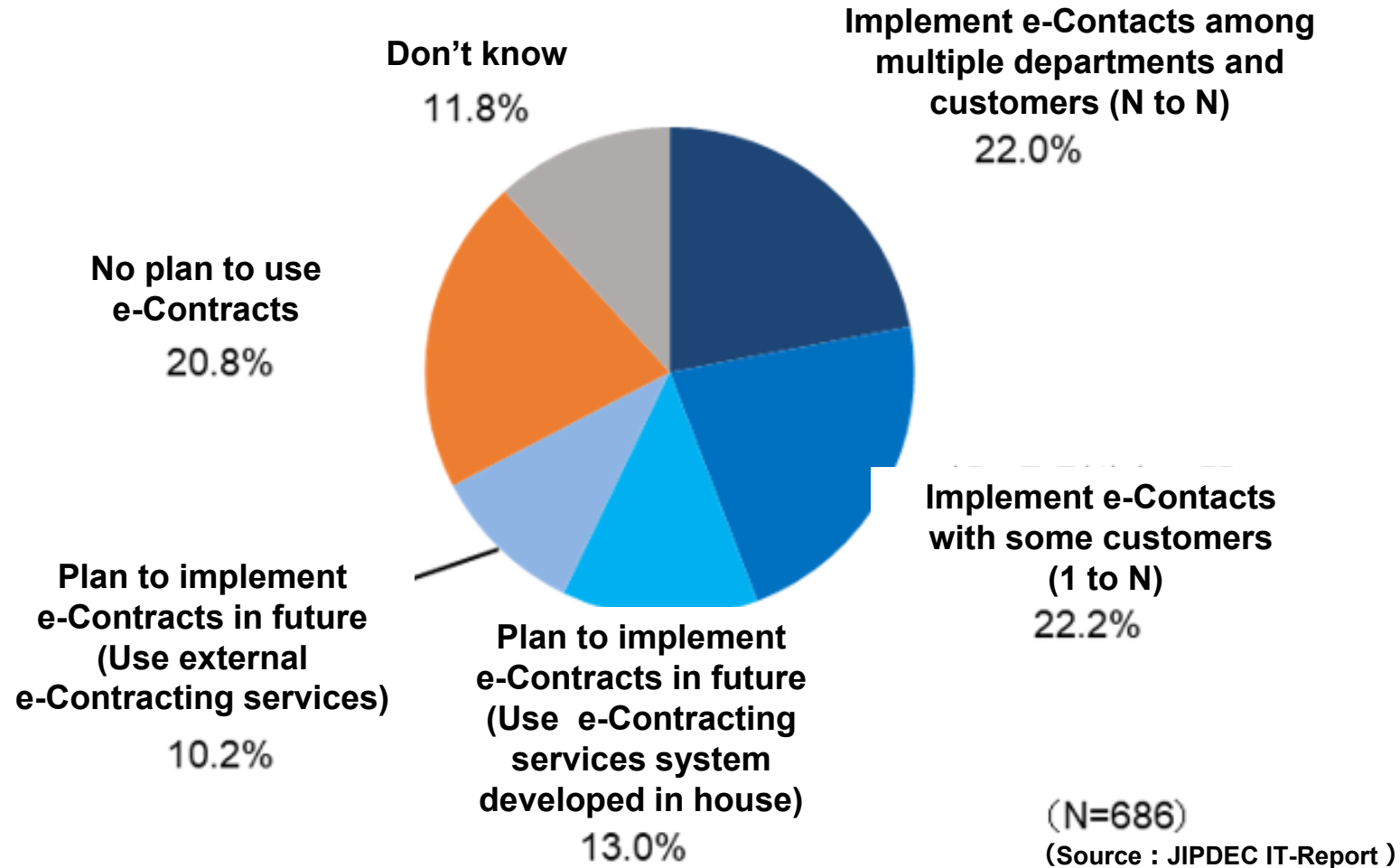


- 複数の部門、取引先との間で電子契約を採用している (N対N型)
- 一部の取引先との間で電子契約を採用している (1対N型)
- 今後の電子契約の採用を検討している (自社開発の電子契約システムを利用)
- 今後の電子契約の採用を検討している (外部の電子契約サービスを利用)
- 電子契約を採用する予定はない
- わからない

(出典 : JIPDEC IT-Report)

Use of e-Contracting Services

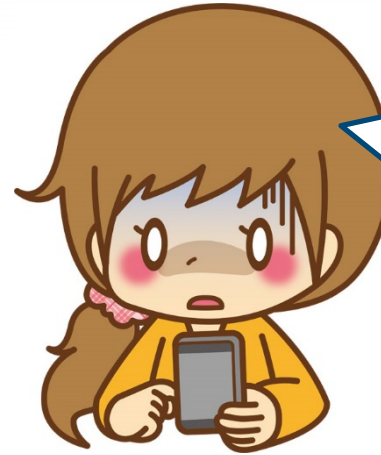
- More than 40% companies are using e-Contracts, and about 70% of companies are using/considering it.



3. Internet Trust and its Assessment

■ Traditional method to ensure the trustworthiness such as F2F verification does not work for application services on the Internet.

■ To solve this problem, the services need to be assessed neutrally by a third party.



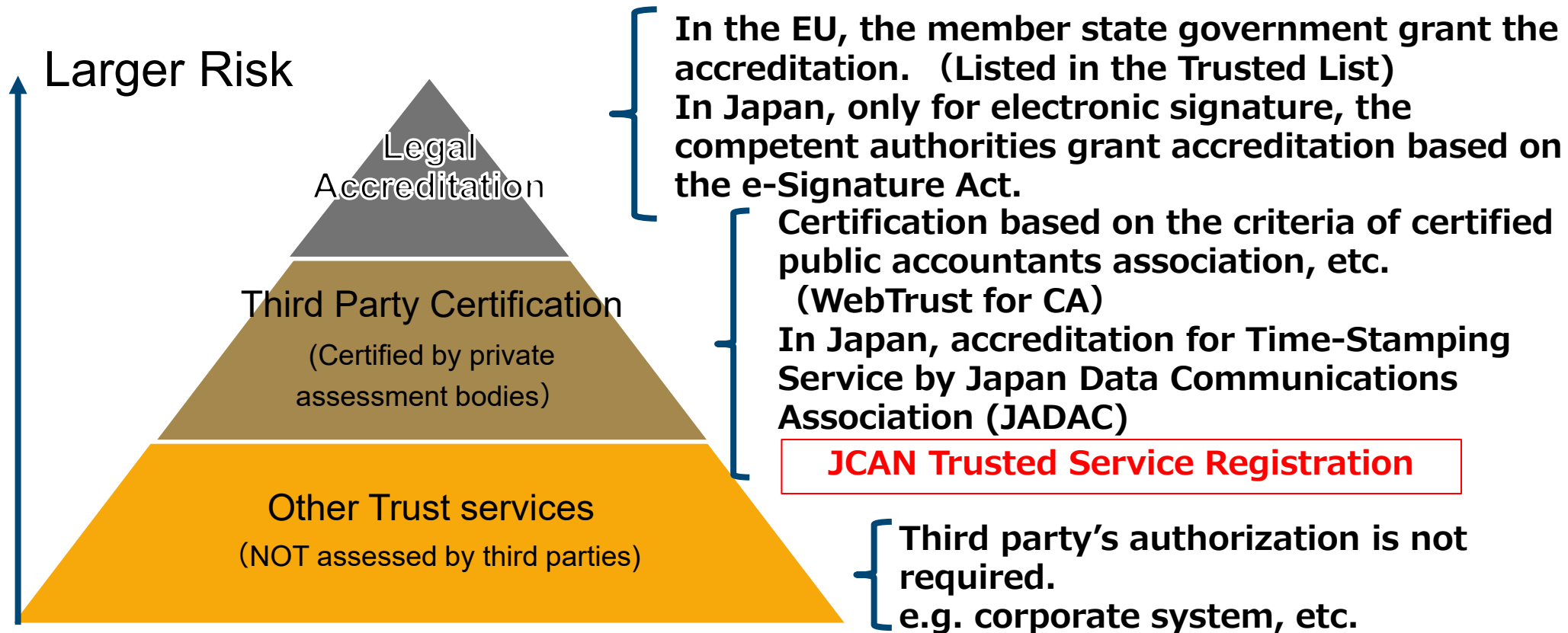
Do you rely on review sites or online reviews?



It seems I can rely on it!

Trustworthiness Assessment for Certification Authorities and e-Contracting Services, etc.

- The trustworthiness assessment framework can be divided into 3 levels according to the severity of risk.



Source : Drawing based on the concept of eIDAS Regulation

4. Outline of JCAN Trusted Service Registration

■ Target of Trust Service Assessment at present

Certification Authority

- ✓ Issuing Authority, Registration Authority
- ✓ Local Registration Authority (LRA) (Identity verification, Deliver of electronic certificate, etc.)

e-Contracting Service

- ✓ User management including identity verification
- ✓ Management of signing key
- ✓ Management of electronic contract
- ✓ Electronic signature function for remote signature

Website, e-Mail · ·

- ✓ Under consideration

JCAN Trusted Service Registration (JTS Registration)

■ Assessment Requirements for Certification Authority

JIPDEC prepared the requirements based on ETSI TS 102 042 and WebTrust for CA.

- ➔ Plan to use EN 319 401 v2.2.1 and EN 319 411-1, etc. for assessment as appropriate in future.
- ➔ Contribute to provision of more trustworthy electronic certificate in private industry.

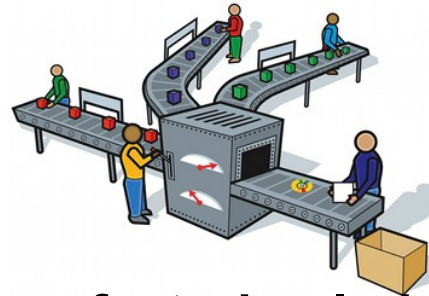
■ Assessment Requirements for e-Contracting Services-Remote Signature

JIPDEC prepared the requirements with experts' opinions about system operations and management criteria of Certification Authorities and e-Contracting, and based on the technical requirements of ETSI TS 119 431 (Remote Signature).

- ➔ Contribute to provision of more trustworthy e-Contracting services in private sector.

Used Area of JTS Registration (CA and LRA)

■ Used Areas



Manufacturing Industry



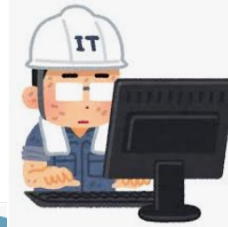
Product Safety test



Environmental Inspection



Financial Industry



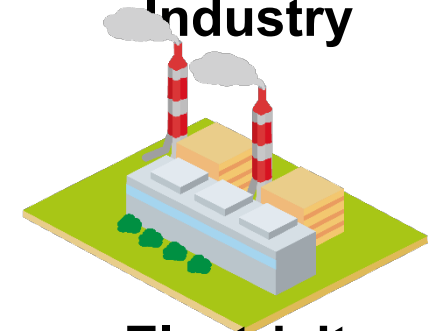
Construction Inspection



Housing Industry



Defense Industry



Electricity Industry



Transportation Industry



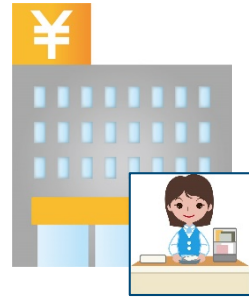
IT Software Industry



JCAN Trusted Service Registration:
JTS Registration

JTS Registration (e-Contracting)

■ Used Areas



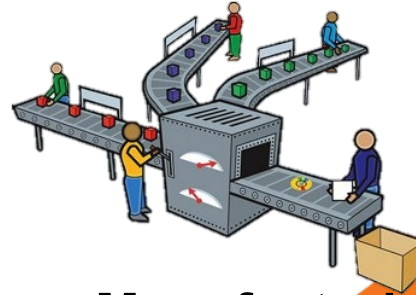
Financial Industry



Construction Industry



Construction Inspection



Manufacturing Industry



Housing Industry

High demand in e-Contracting services.
Multiple companies are under assessment now.

Registered Organizations of JTS Registration (LRA)

28 organizations are registered.

As of 2019.5.10

Will be released sequentially.

➔ <https://itc.jipdec.or.jp/trustedlist.html>

Registered Organizations and Service Names of JTS Registration

■ JTS Registration (Certification Authority)

- Mizuho Bank, Ltd.

「Mizuho Bank Certification Authority」

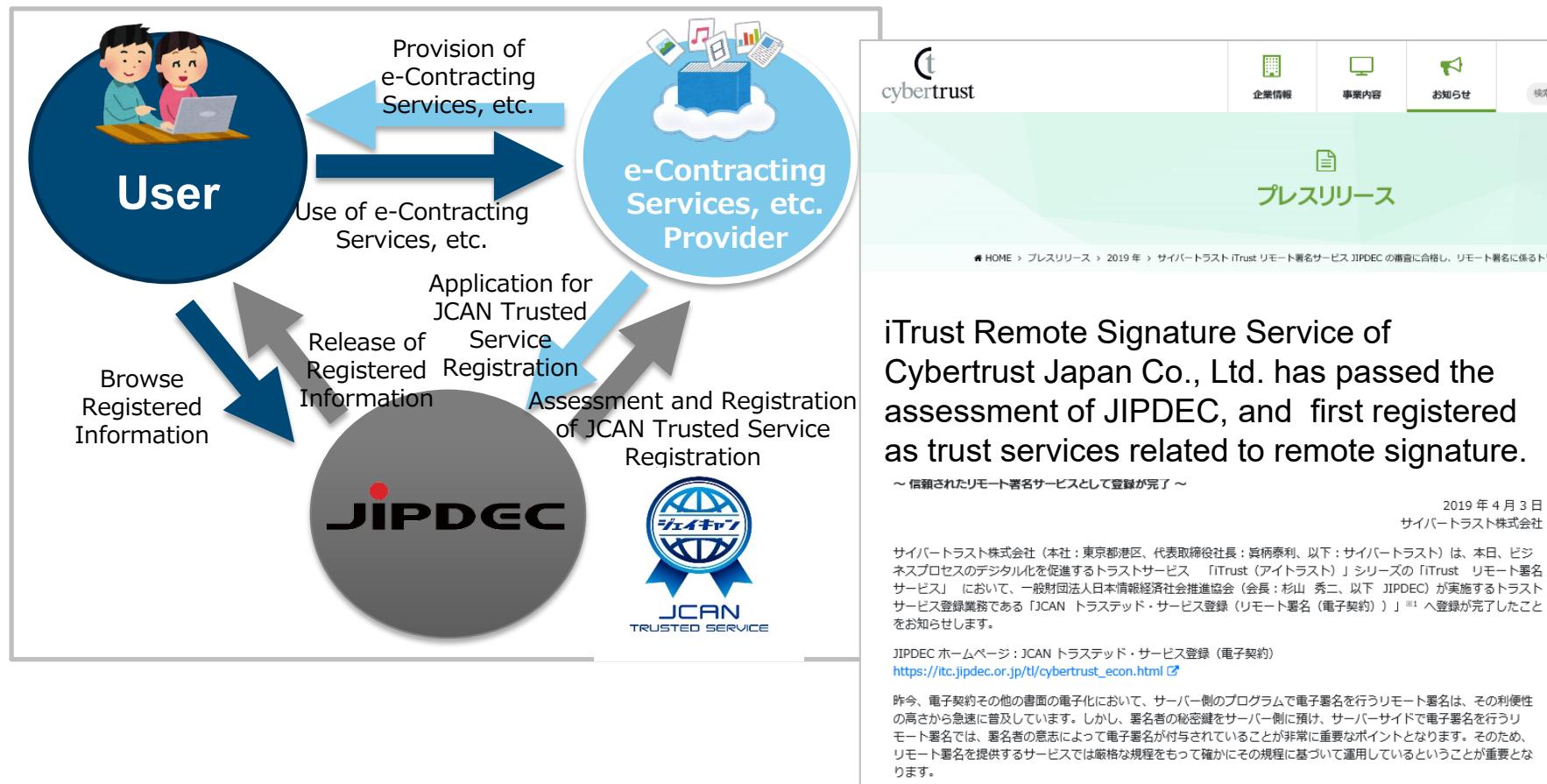
■ JTS Registration (Remote Signature(e-Contract))

- Cybertrust Japan Co., Ltd.

「iTrust Remote Signature Service」

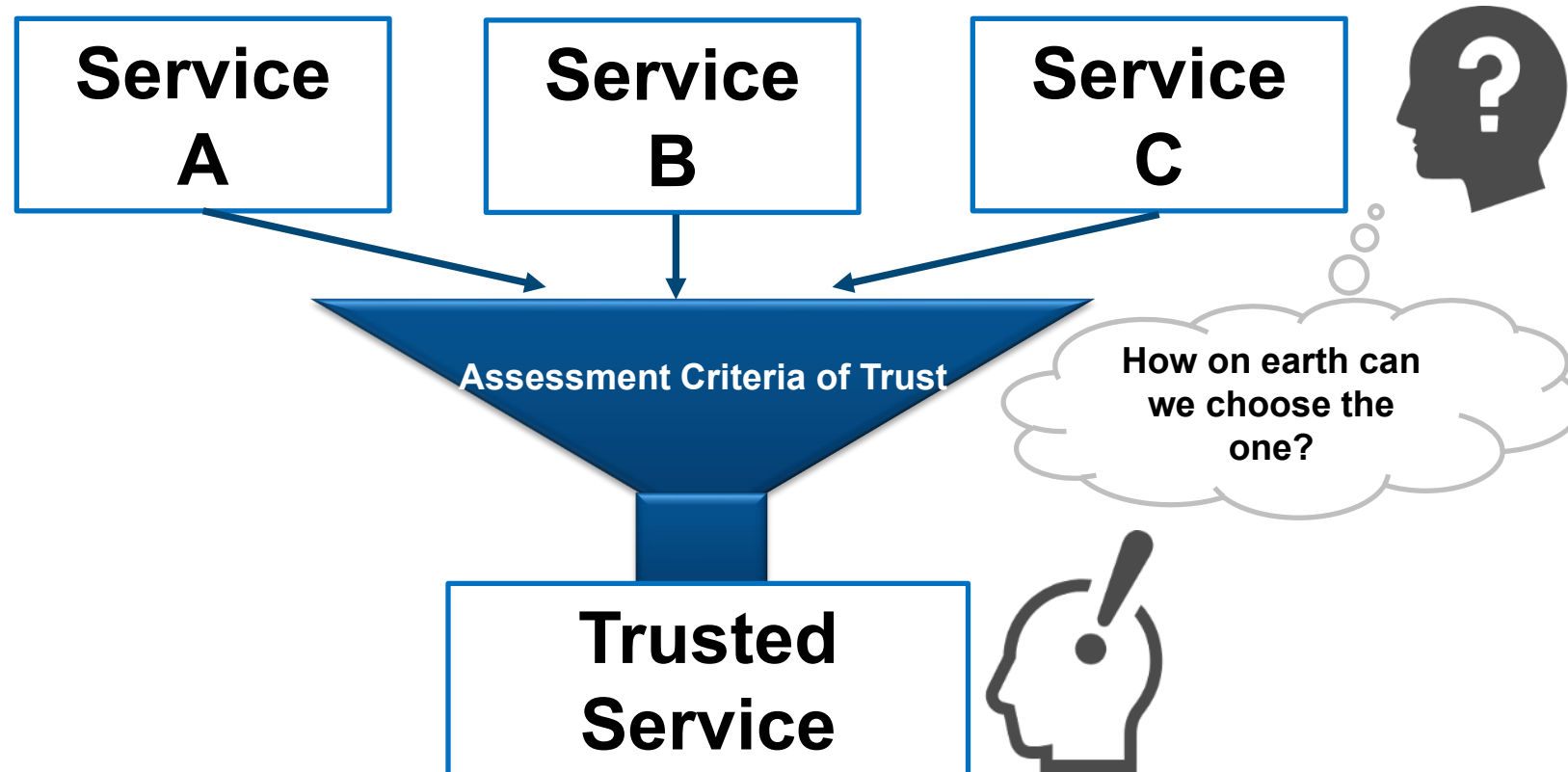
Remote Signature (e-Contracting)

“iTrust Remote Signature Service” of Cybertrust Japan Co., Ltd. is registered on April 1st as the first JCAN Trusted Service Registration (Remote Signature (e-Contract)).



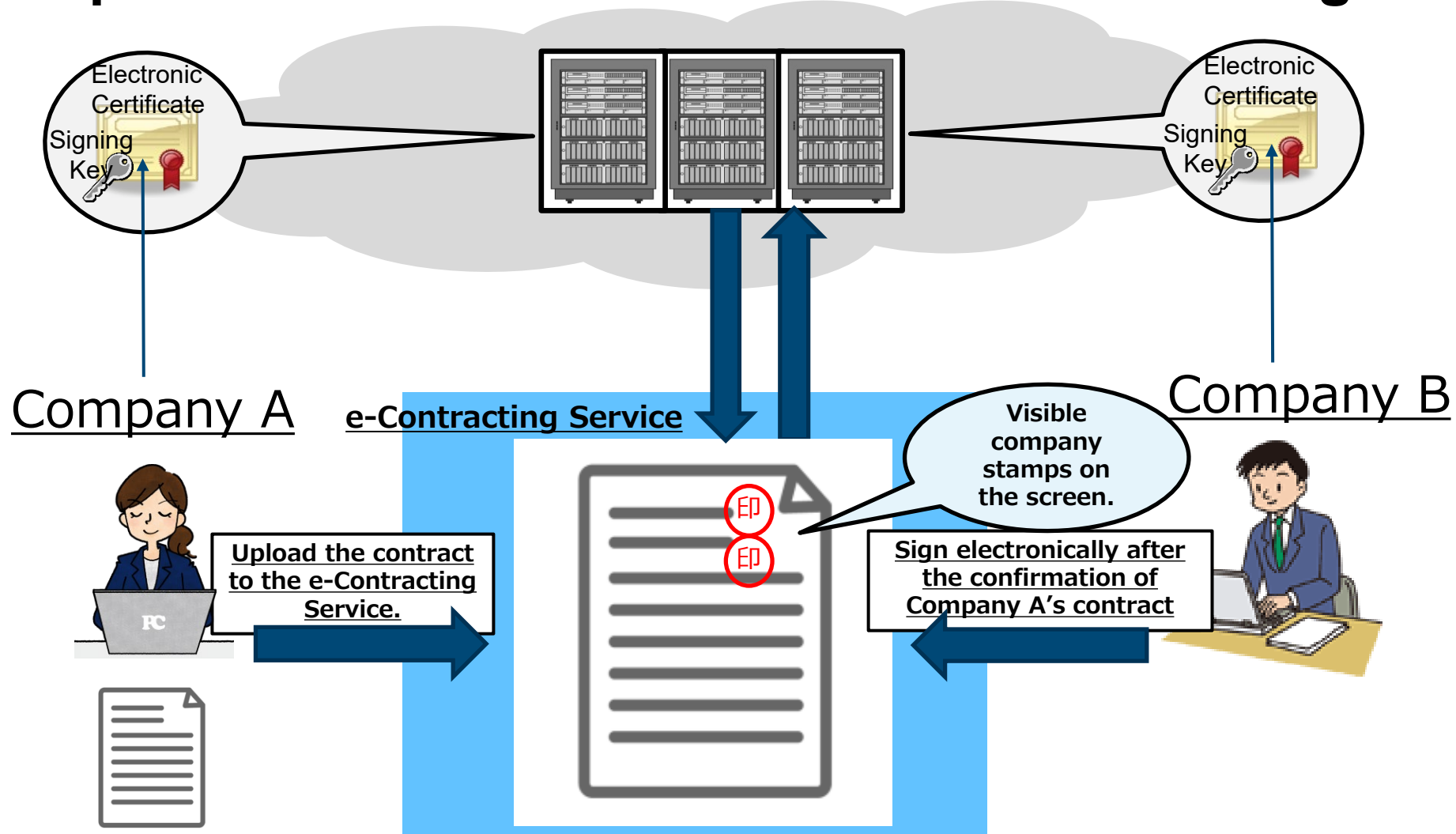
Selection of e-Contracting Services

- Criteria to select e-Contracting services are necessary.
- Especially for SMEs, trustworthy e-Contracting services should be clearly identified.



Cloud based e-Contracting Services

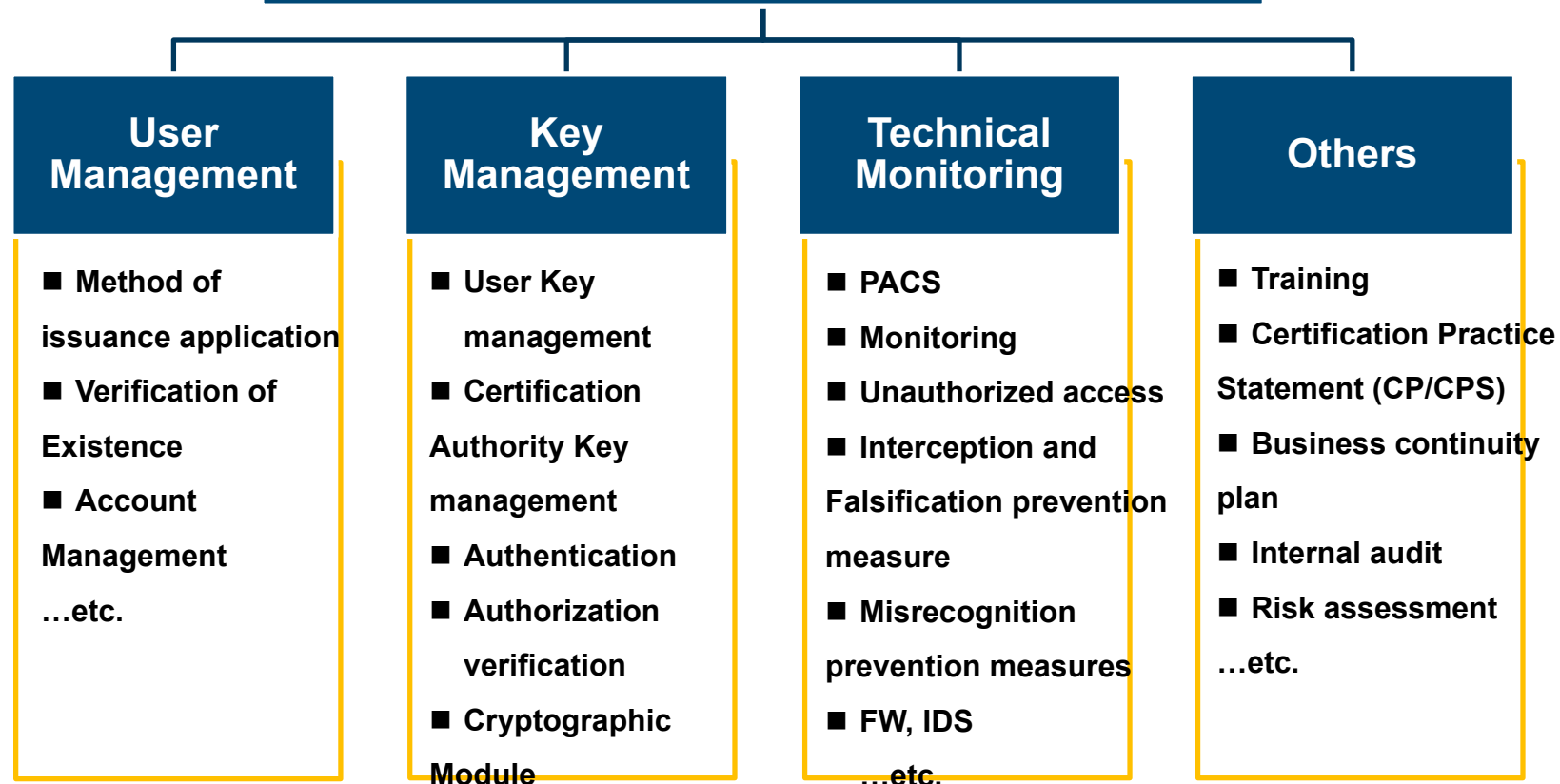
- Simple operation with cloud based certificates management.



Assessment Items of Certification Authority



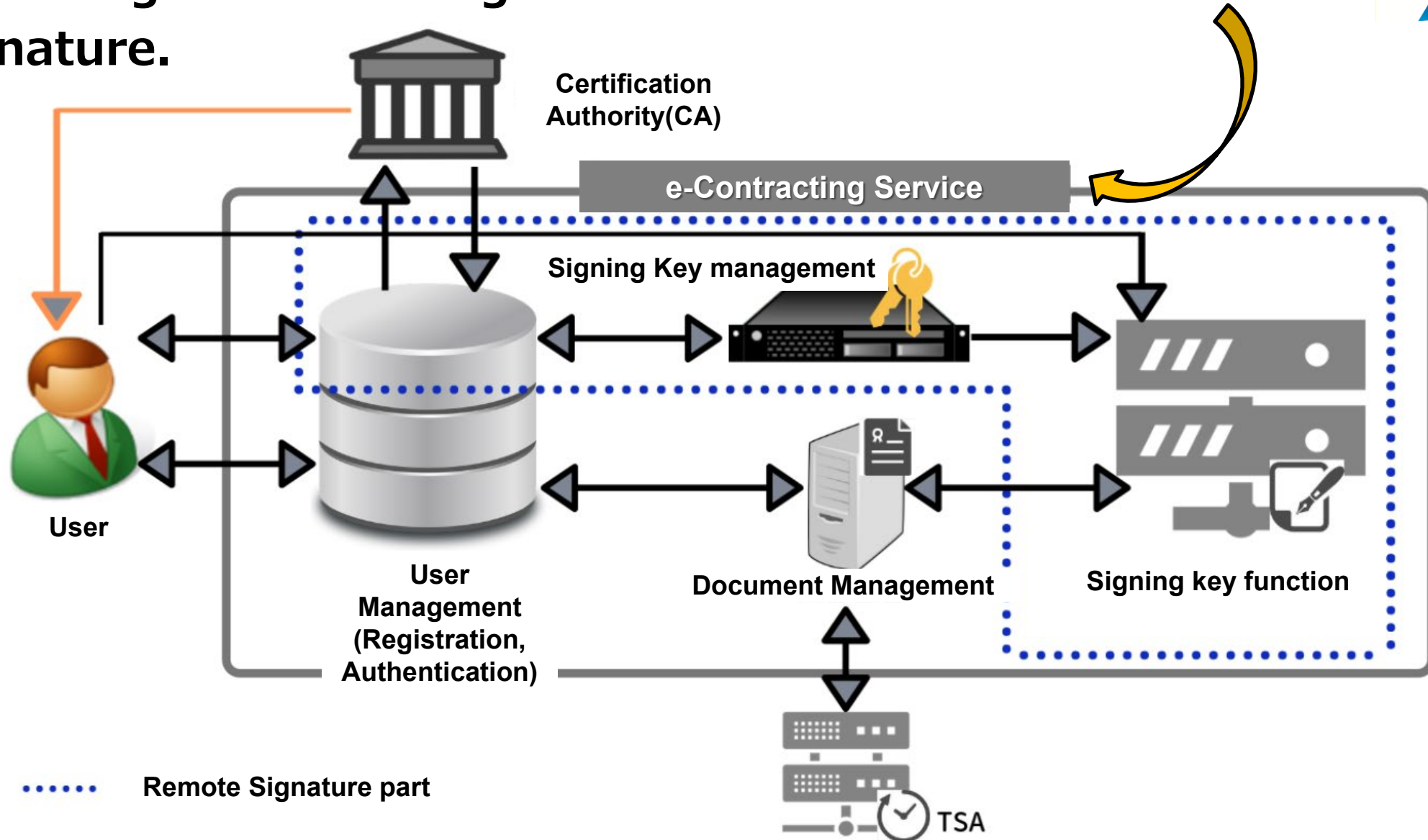
JCAN Trusted Service Registration (Certification Authority)



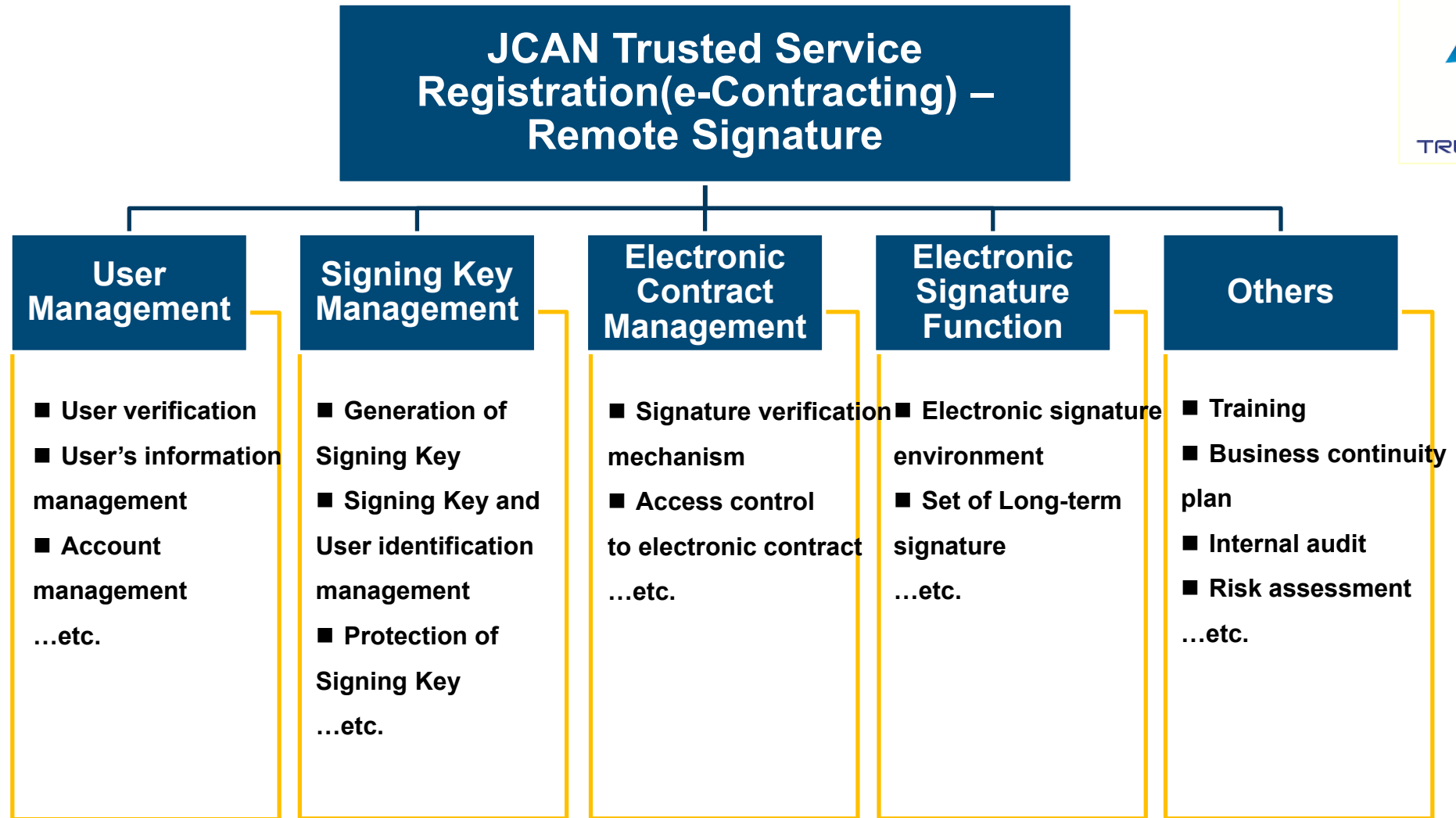
Registration of e-Contracting Services



■ Assessing e-Contracting Services with cloud based e-Signature.



Assessment Items of e-Contracting Services



5. Toward the Realization of Trust



- Complete digitization of business documents
- Prevention of falsification of data and spoofing
- Adoption as procurement criteria, etc.
- Cooperation with International standardization activities
- Cooperation with assessments for other cloud based services

JTS Adopted as Bidding Requirements of Acquisition, Technology & Logistics Agency



■ **Electronic Certificate fulfilling the registration criteria is regarded as it is equivalent to the Public Electronic Certificate.**

• **Public Notice No. 163 dated September 14th, 2018**

(Excerpt from the Specification)

Issued Electronic Certificate shall be the electronic certificate issued by the Certification Authorities fulfilling “Web Trust for CA Criteria”, “ETSI Standards” or “JCAN Trusted Service Registration Criteria”.

International Cooperation of Electronic Business Environment

■ xDTM Standard Association



Established in order to develop and manage the standards related to digital transaction management.

Consists of more than 300 companies and governmental non-profit organizations mainly from the US.

JIPDEC became a member in 2017.

Chairman of the Board

DocuSign
Reggie Davis
General Counsel and Chief Legal Officer, DocuSign

Board Members

Microsoft
Bret Arseneault
Chief Information Security Officer, Microsoft

Purdue University
Dr. Arden Lee Bement, Jr.
Distinguished Professor of Nuclear Engineering and Director of the Global Policy Research Institute, Purdue University

JIPDEC
Toru Yamauchi
Managing Director and Head of the Internet Trust Center, JIPDEC

RiskIQ
Jason Zann
Vice President and Head of Trust, RiskIQ

JIPDEC

Toru Yamauchi

Managing Director and Head of the Internet Trust Center, JIPDEC

Promote digitization of trustworthy documents and process automation as one of the Board Members.

Promotion together with Other Organizations

- **Japan Data Communications Associations
Japan Trust Service Forum**



➔ Cooperate in research and study, provide and share the information about trust services, and promote public awareness

- **Japan Trust Technology Association**



➔ Discuss and develop technical guidelines about trust services, and promote public awareness

■ JTS Registration (Remote Signature(e-Contract))

✓ Cybertrust Japan Co., Ltd.

● Protect User's Information

- ◆ Management of User Identification Information

- ◆ Management of User's Signing Key

● Security Management

- ◆ Signature Creation Environment

● Stable Operation of Business

- ◆ Risk Assessment

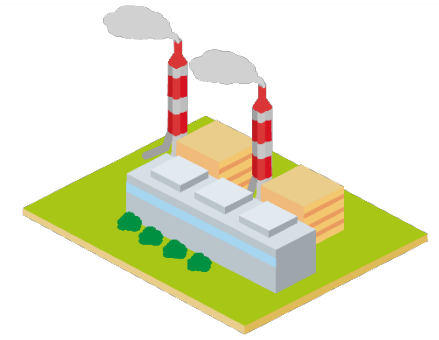
- ◆ Business Continuity Plan, etc.



IT Industry

■ JTS Registration (LRA)

- Identity Verification
- Issuance and Operation Management of Electronic Certificates
- Lifecycle Management of Electronic Certificates, etc.



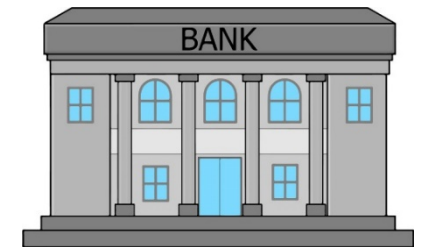
Critical Infrastructure Industry

✓ Docusign, Inc.

Use Case of JTS Registration in Japan

✓ NS Solutions Corporation

Spread of e-Contracting Use



JIPDEC for realizing the Internet Trust together with you.

