



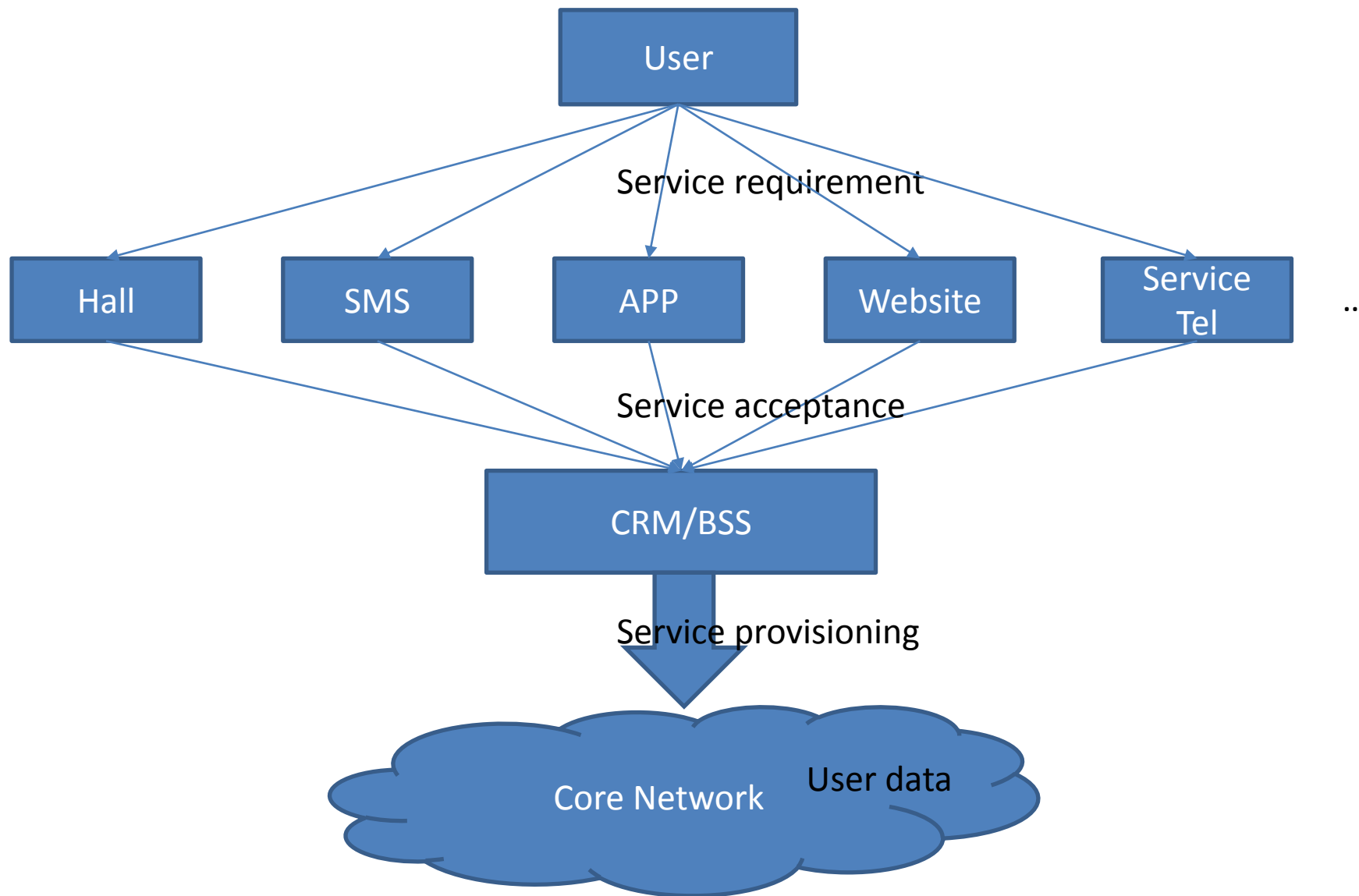
中国移动
China Mobile

One step of service provisioning

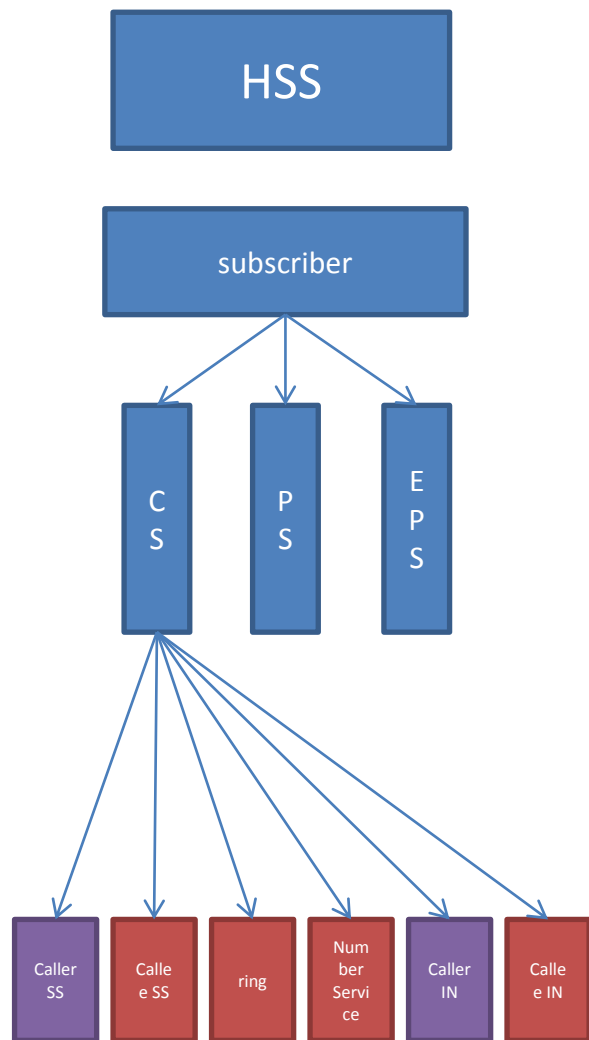
Zhao Peng

2016.12.16

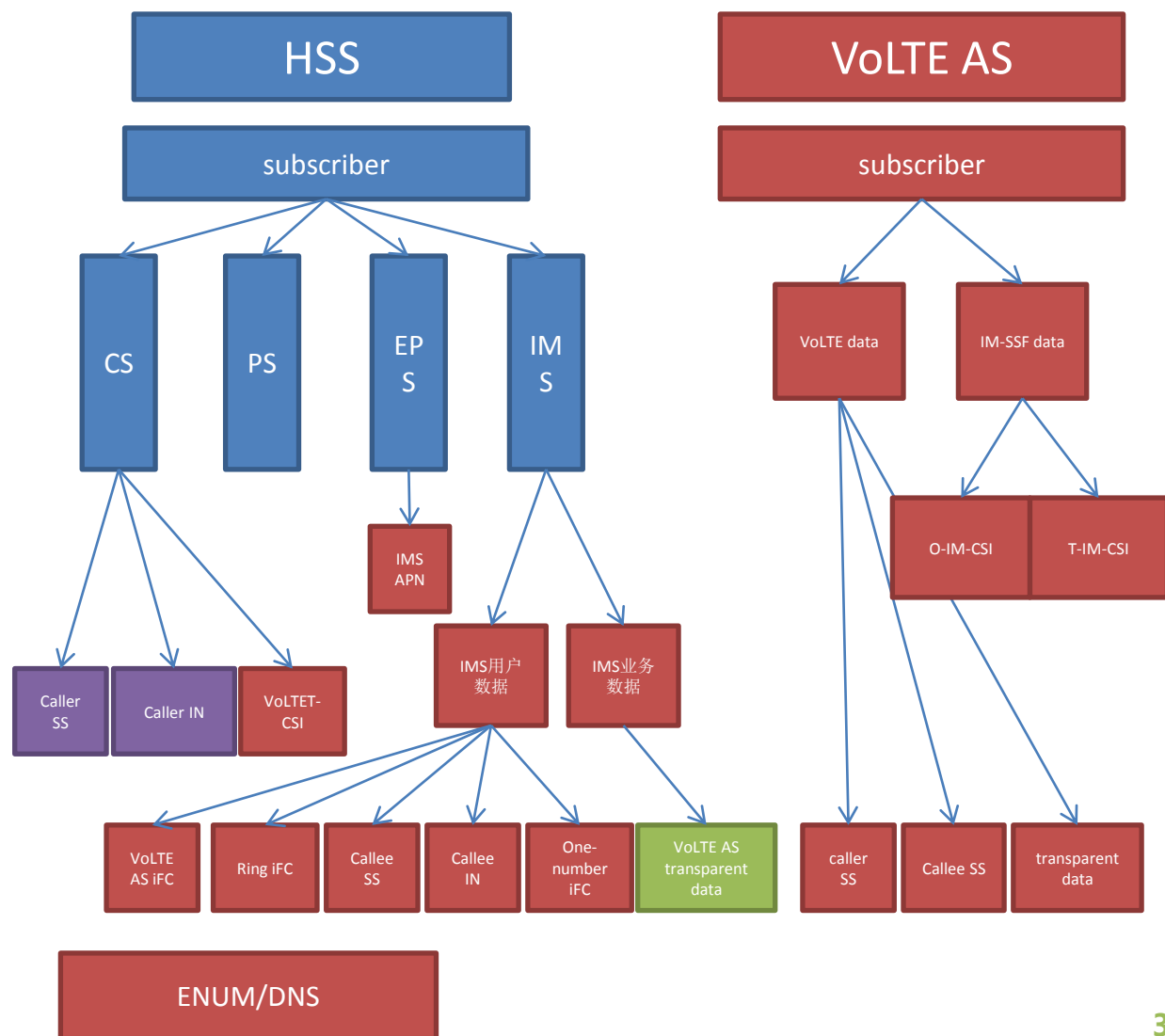
www.10086.cn



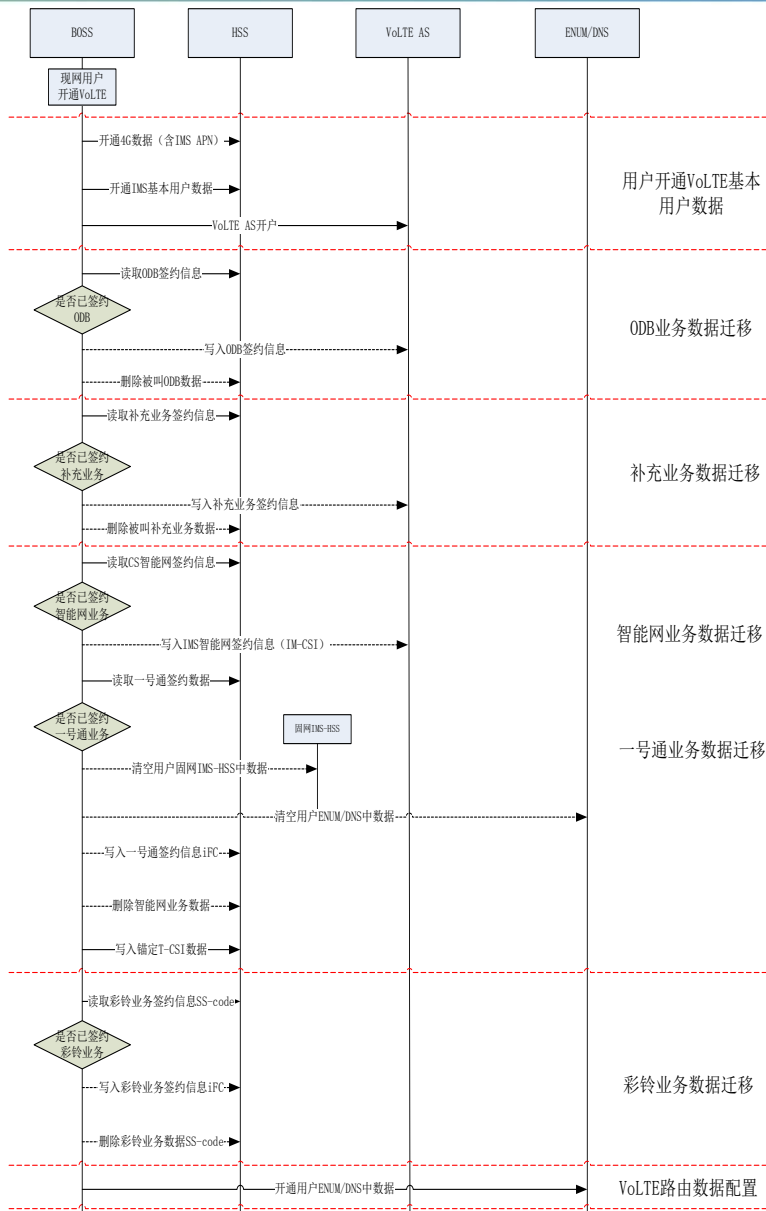
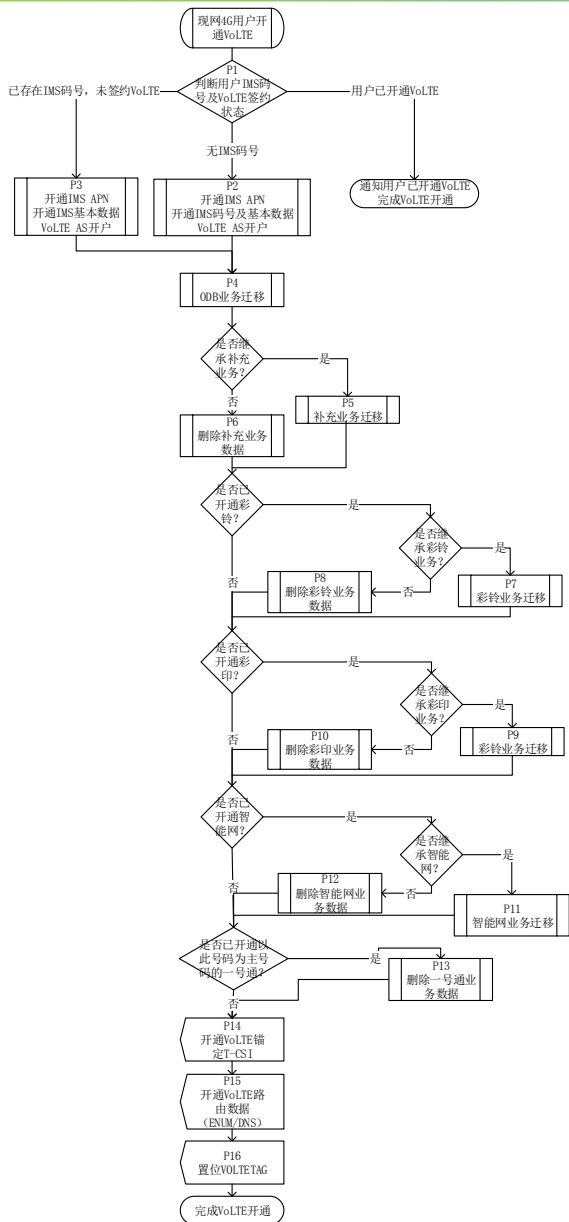
2G 3G users

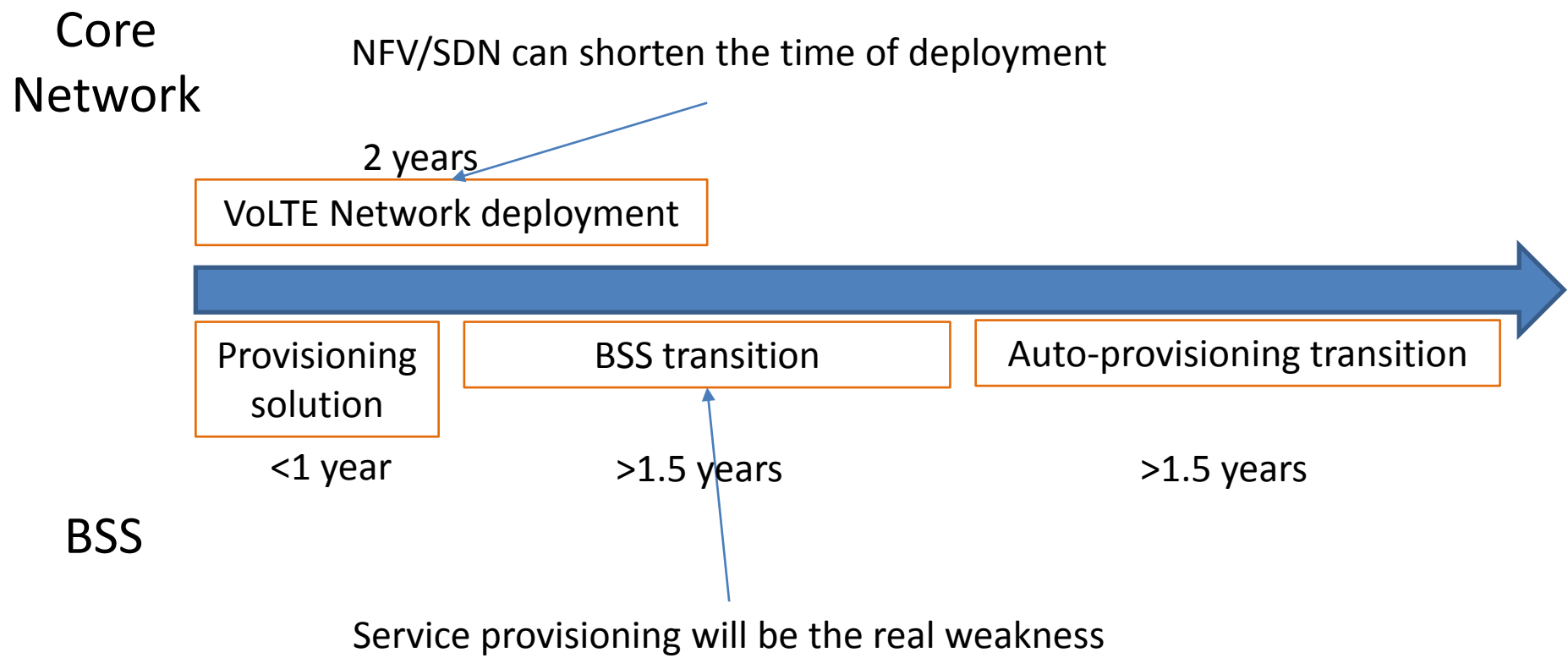


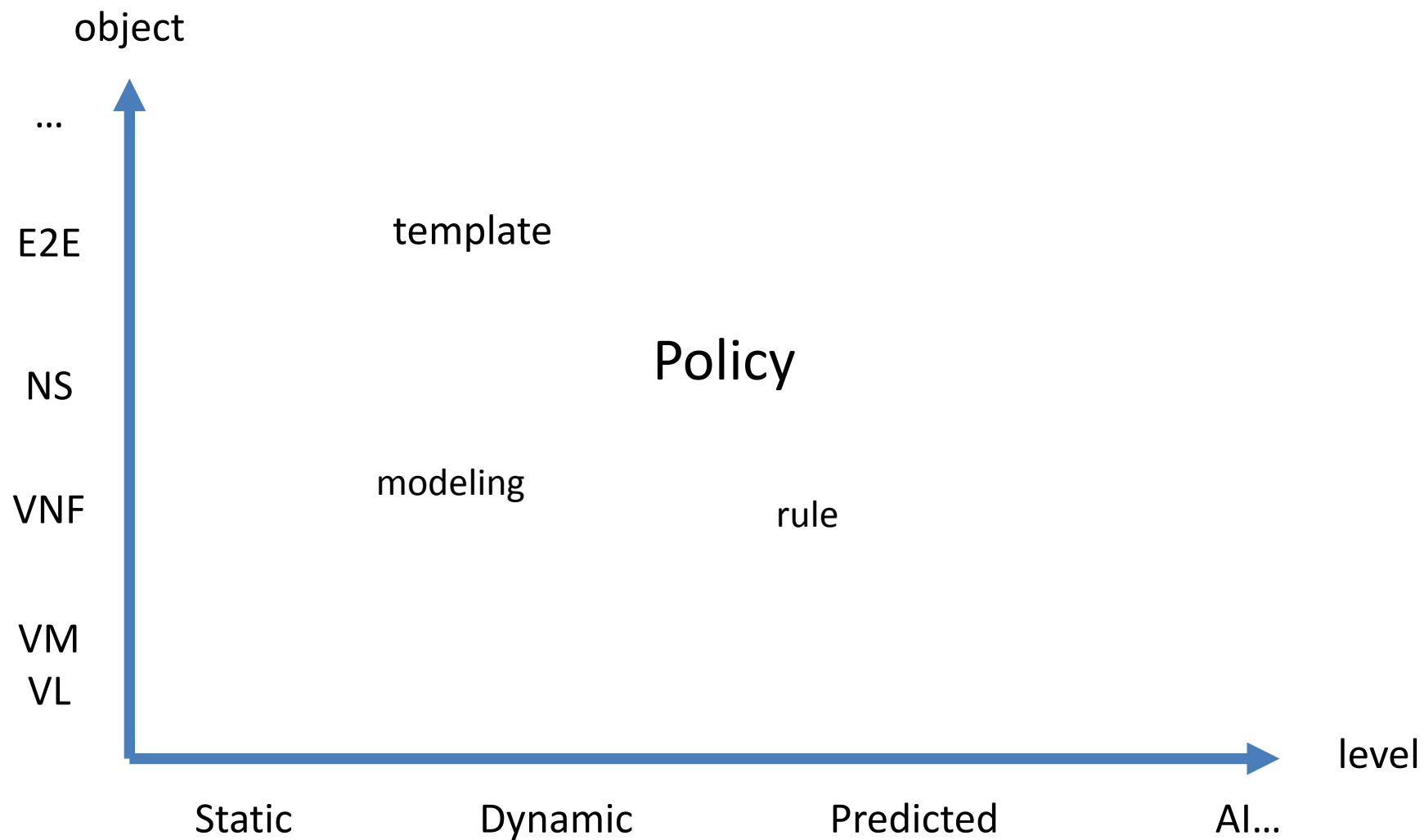
VoLTE users



VoLTE provisioning workflow







- NFV/SDN is the entry point of network intelligence
 - Virtualisation and software defined make network intelligence possible
 - Complicated network also require intelligent method to operate
- Network intelligence is more than NFV/SDN...
 - Surrounding systems, e.g. billing system, charging system, provisioning system, fault diagnostic system, monitoring system, data analysis system... sometimes are the real barriers for the service TTM

The ultimate goal of development of science and technology, is to improve the human experience.

- ISG ENI White Paper

We need the network with better experience to not only the users but also the operators.



中国移动
China Mobile

谢谢！

www.10086.cn